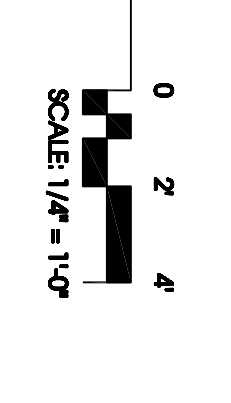


FIRST FLOOR PART EQUIPMENT ROOM PLAN



- GENERAL NOTES:**
1. BOND THE HOUSING OF ALL OF THE POOL RELATED EQUIPMENT TO THE GREEN WIRE GROUNDING SYSTEM.
 2. PROVIDE TWO DEREGATED 120V-20A CIRCUITS TO EACH CONTROLLER (3 TOTAL). PROVIDE CONTROL WIRING TO THE CORRESPONDING POOL PUMP FOR INTERLOCK. CONTINUE ONE CIRCUIT TO THE CORRESPONDING CHLORINE PUMP IN 131A & ONE CIRCUIT TO THE ACID PUMP IN 131B. VERIFY WIRING TO BE FED FROM THE CORRESPONDING CHLORINE CONTROLLER IN POOL MECHANICAL 132.
 3. PROVIDE A COMBINATION SWITCH/RECEPTACLE (S-200) FOR EACH CHLORINE PUMP (3 TOTAL). TO BE FED FROM THE CORRESPONDING CHLORINE CONTROLLER IN POOL MECHANICAL 132.
 4. PROVIDE TWO DEREGATED 120V-20A CIRCUITS TO EACH CHLORINE CONTROLLER. VERIFY REQUIREMENTS WITH THE MANUFACTURERS EQUIPMENT.
 5. PROVIDE TWO DEREGATED 120V-20A CIRCUITS TO EACH CHEMICAL CONTROLLER. VERIFY REQUIREMENTS WITH THE MANUFACTURERS EQUIPMENT.

ELEVATION - MOTOR CONTROL CENTER 'MCC'				
SCALE NONE				
A	MCC-1	MCC-2	MCC-3	MCC-4
B	SPAC 3 SIZE 3 FL60A	SPAC 3 SIZE 3 FL60A	FUSIBLE SWITCH ONLY	SPAC 1 SIZE 1 FL625A
C	SPAC 3 SIZE 3	SPAC 3 SIZE 3 FL60A	FUSIBLE SWITCH ONLY	SPAC 1 SIZE 1 FL625A
D	SPAC 3 SIZE 3	SPAC 3 SIZE 3 FL60A	FUSIBLE SWITCH ONLY	SPAC 1 SIZE 1 FL625A

- NOTES:**
1. CHANGE ALL SWITCHES WITH MANUFACTURER CONTACTS, USE ASSETS, & RED RUN SIZE LABELS.
 2. PROVIDE CONTROL WIRING TO THE REMOTE START/STOP TERMINALS & THE POOL CONTROLLER LOCATED IN LIFE GUARD 113. VERIFY WITH THE POOL CONTRACTOR FOR EXACT LOCATION.

REVISION LOG		APPROVED BY	
DATE	REVISION	DATE	DESCRIPTION

RECORD DRAWING

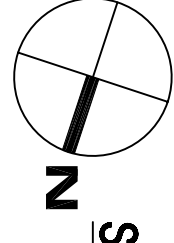
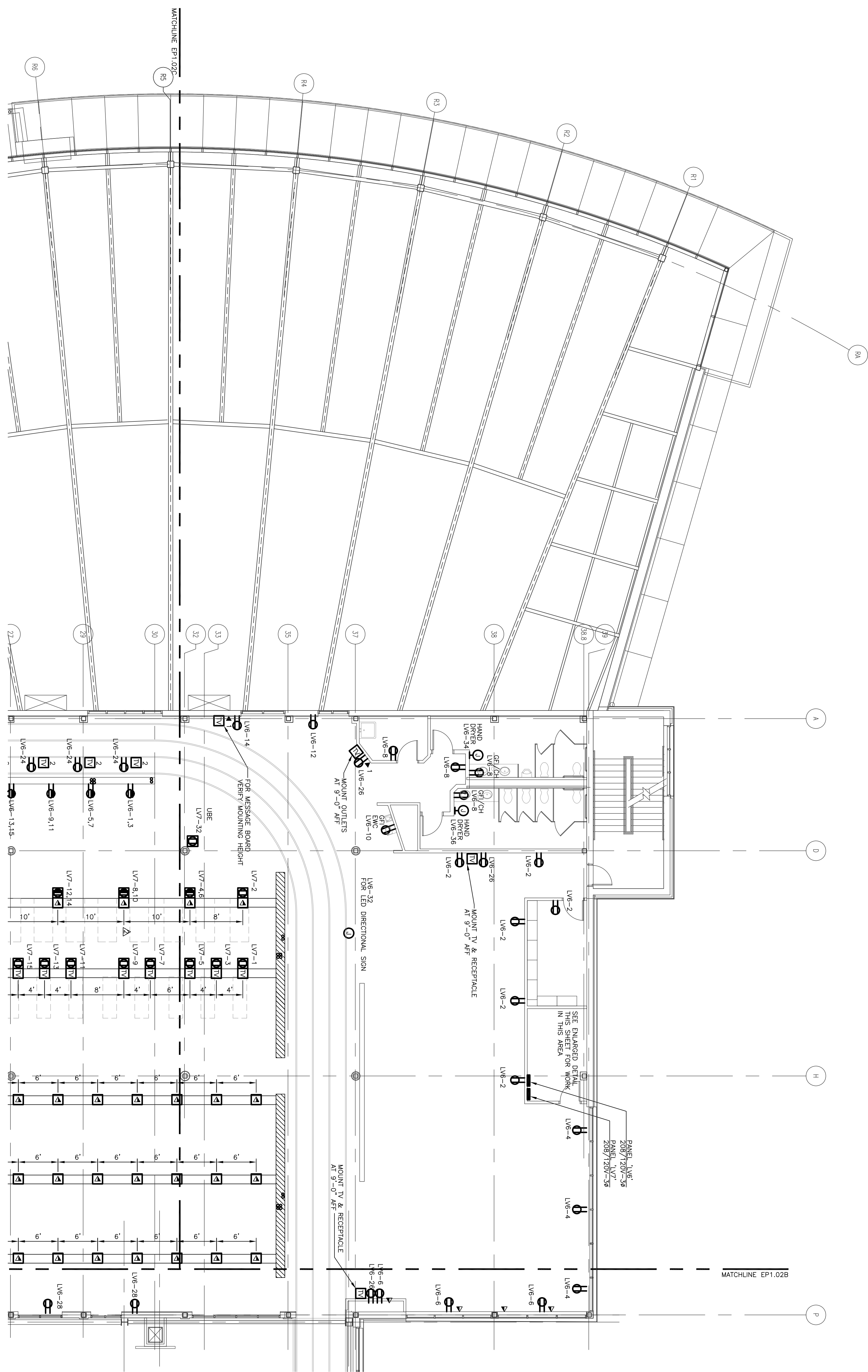
PROJECT NO: 461920
 DATE: JUNE 28, 2010
 REVISIONS:
 DRAWN BY: LEVI THOMPSON
 REVIEWED BY: THOM NOBLE

NEW MULTIGENERATIONAL RECREATION CENTER
 COUNTY OF ROANOKE
 ROANOKE, VIRGINIA

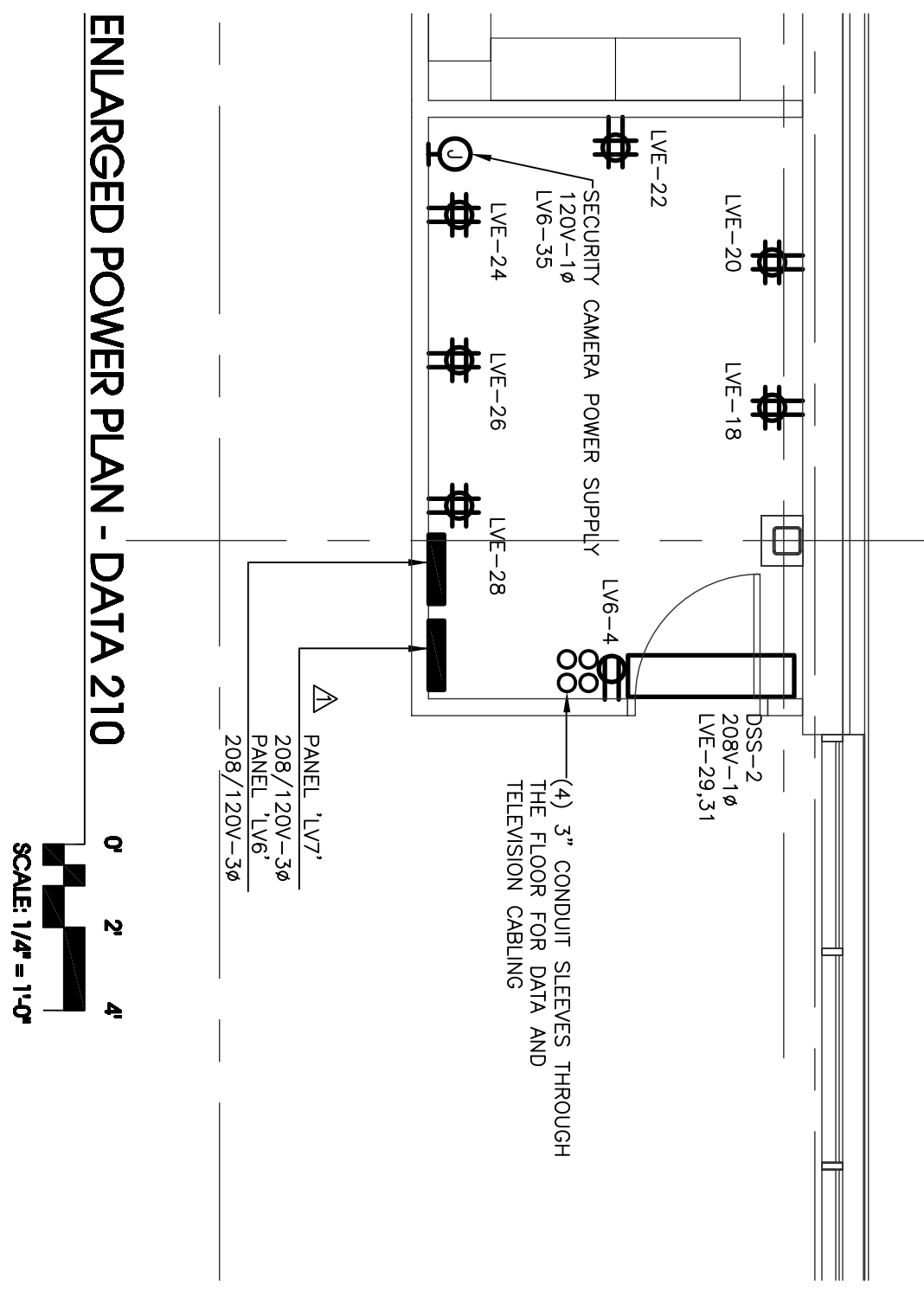
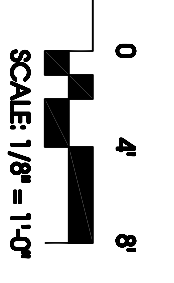


MOSELEY ARCHITECTS
 A PROFESSIONAL CORPORATION
 780 LYNNHAVEN PARKWAY, SUITE 200 VIRGINIA BEACH, VIRGINIA 23462
 PHONE (757) 368-2800 FAX (757) 368-2233
 MOSELEY

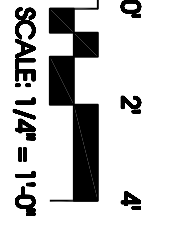
FIRST CHOICE 3200 NORFOLK STREET
 PUBLIC-PRIVATE PARTNERS RICHMOND, VA 23228
 PHONE (804) 794-7555



SECOND FLOOR PART POWER PLAN



ENLARGED POWER PLAN - DATA 210



- GENERAL NOTES:
- PROVIDE WIRELESS INTERNET IN THE FITNESS AREA.
 - PROVIDE WIRELESS INTERNET FOR THE FITNESS EQUIPMENT IN THE FLOOR DUCT SYSTEM (FLOOR DUCT CONTINUED ON SHEET EP1.023).
 - PROVIDE (50) DATA OUTLETS FOR THE FITNESS EQUIPMENT IN THE FLOOR DUCT SYSTEM.
 - PROVIDE (50) TV OUTLETS IN THE FLOOR DUCT SYSTEM (FLOOR DUCT CONTINUED ON SHEET EP1.023).
 - PROVIDE (50) TV OUTLETS IN THE FLOOR DUCT SYSTEM (FLOOR DUCT CONTINUED ON SHEET EP1.023).

RECORD DRAWING

DATE	REVISION NUMBER	BY	DESCRIPTION
11/25/09	1	THOMAS NOBLE	ISSUED FOR PERMIT
3/17/09	2	THOMAS NOBLE	REVISED ROOM SIZES

PROJECT NO: 461920
 DATE: JUNE 28, 2010
 REVISIONS:
 DRAWN BY:
 REVIEWED BY:

NEW MULTIGENERATIONAL RECREATION CENTER
 COUNTY OF ROANOKE
 ROANOKE, VIRGINIA

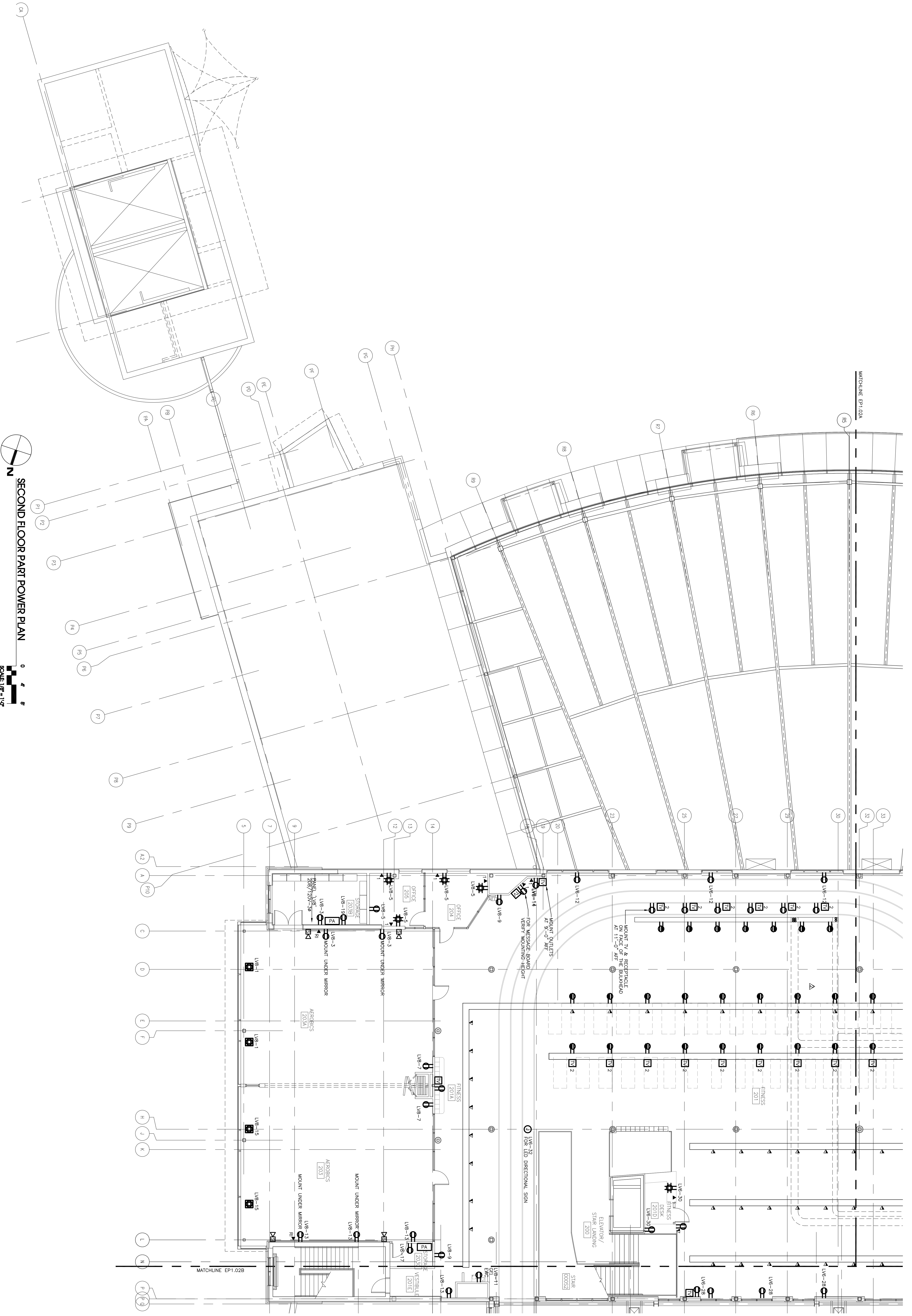


SOUTHERN AIR INC.
 2655 LAKESIDE DR. P.O. BOX 4205
 LYNCHBURG, VIRGINIA 24502-0055

MOSELEY ARCHITECTS
 A PROFESSIONAL CORPORATION
 760 LYNNHAVEN PARKWAY, SUITE 200 VIRGINIA BEACH, VIRGINIA 23462
 PHONE (757) 368-2800 FAX (757) 368-2233
 MOSELEY

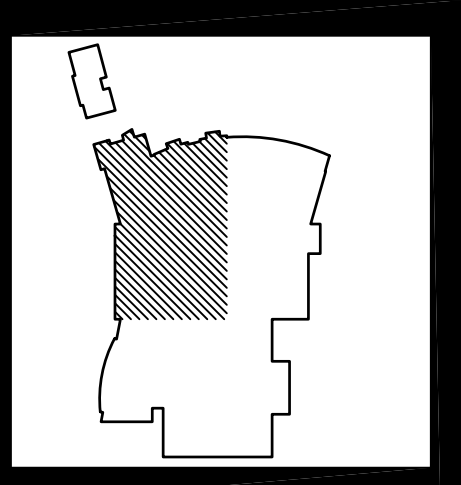
FIRST CHOICE 3200 NORFOLK STREET
 RICHMOND VA 23230
 Public-Private Partners PHONE (804) 794-7555

EP1.02A



GENERAL NOTES:
 A. PROVIDE WIRELESS ANTENNAE IN THE FITNESS AREA.
 B. PROVIDE WIRELESS ANTENNAE FOR THE FITNESS EQUIPMENT IN THE FLOOR DUCT SYSTEM (FLOOR DUCT CONTINUED ON SHEET EP1.02A).
 C. PROVIDE (60) DATA OUTLETS FOR THE FITNESS EQUIPMENT IN THE FLOOR DUCT SYSTEM (FLOOR DUCT CONTINUED ON SHEET EP1.02A).
 D. PROVIDE (20) TV OUTLETS IN THE FLOOR DUCT SYSTEM (FLOOR DUCT CONTINUED ON SHEET EP1.02A).
 E. EXACT LOCATIONS OF FLOOR DUCT & THE POWER/DATA DEVICES PENDING FINAL EXERCISE EQUIPMENT LAYOUT.

SECOND FLOOR PART POWER PLAN
 0 4 8'
 SCALE 1/8" = 1'-0"



DATE	REVISION NUMBER	NAME	DESCRIPTION
11/11/09			ISSUED FOR PERMIT
11/27/09			FORWARD AND OBTAIN REV

RECORD DRAWING

REVISION LOG

NO.	DATE	DESCRIPTION
1	JUNE 28, 2010	ISSUED FOR PERMIT
2		FORWARD AND OBTAIN REV

NEW MULTIGENERATIONAL RECREATION CENTER
 COUNTY OF ROANOKE
 ROANOKE, VIRGINIA



MOSELEY ARCHITECTS
 A PROFESSIONAL CORPORATION
 780 LYNNHAVEN PARKWAY, SUITE 200 VIRGINIA BEACH, VIRGINIA 23462
 PHONE (757) 368-2800 FAX (757) 368-2233
 MOSELEY
FIRST CHOICE 3200 NORFOLK STREET
 Public-Private Partners RICHMOND VA, 23230
 PHONE (804) 794-7555

EP1.02C

SECOND FLOOR PART POWER PLAN

PANEL "LV1" 120/208V-3Ø,4W,5N 225A MIO. Table with columns: CIRCUIT NUMBER, LOAD SERVED, BREAKER NO./POLES/SIZE, PHASE, CONDUCTOR, MINIMUM CONDUIT SIZE, AMPERAGE (A, B, C, Ø).

PANEL "LV4" 120/208V-3Ø,4W,5N 225A MIO. Table with columns: CIRCUIT NUMBER, LOAD SERVED, BREAKER NO./POLES/SIZE, PHASE, CONDUCTOR, MINIMUM CONDUIT SIZE, AMPERAGE (A, B, C, Ø).

PANEL "LV7" 120/208V-3Ø,4W,5N 225A MIO. Table with columns: CIRCUIT NUMBER, LOAD SERVED, BREAKER NO./POLES/SIZE, PHASE, CONDUCTOR, MINIMUM CONDUIT SIZE, AMPERAGE (A, B, C, Ø).

PANEL "LV2" 120/208V-3Ø,4W,5N 225A MIO. Table with columns: CIRCUIT NUMBER, LOAD SERVED, BREAKER NO./POLES/SIZE, PHASE, CONDUCTOR, MINIMUM CONDUIT SIZE, AMPERAGE (A, B, C, Ø).

PANEL "LV5" 120/208V-3Ø,4W,5N 225A MIO. Table with columns: CIRCUIT NUMBER, LOAD SERVED, BREAKER NO./POLES/SIZE, PHASE, CONDUCTOR, MINIMUM CONDUIT SIZE, AMPERAGE (A, B, C, Ø).

PANEL "LV8" 120/208V-3Ø,4W,5N 225A MIO. Table with columns: CIRCUIT NUMBER, LOAD SERVED, BREAKER NO./POLES/SIZE, PHASE, CONDUCTOR, MINIMUM CONDUIT SIZE, AMPERAGE (A, B, C, Ø).

PANEL "LV3" 120/208V-3Ø,4W,5N 225A MIO. Table with columns: CIRCUIT NUMBER, LOAD SERVED, BREAKER NO./POLES/SIZE, PHASE, CONDUCTOR, MINIMUM CONDUIT SIZE, AMPERAGE (A, B, C, Ø).

PANEL "LV6" 120/208V-3Ø,4W,5N 225A MIO. Table with columns: CIRCUIT NUMBER, LOAD SERVED, BREAKER NO./POLES/SIZE, PHASE, CONDUCTOR, MINIMUM CONDUIT SIZE, AMPERAGE (A, B, C, Ø).

PANEL "LV9" 120/208V-3Ø,4W,5N 225A MIO. Table with columns: CIRCUIT NUMBER, LOAD SERVED, BREAKER NO./POLES/SIZE, PHASE, CONDUCTOR, MINIMUM CONDUIT SIZE, AMPERAGE (A, B, C, Ø).

RECORD DRAWING. Includes revision table with columns: NO., DATE, REVISION, DRAWN BY, CHECKED BY, APPROVED BY.

PROJECT NO: 461920. DATE: JUNE 28, 2010. DRAWN BY: LEVI THOMPSON. REVIEWED BY: THOM NOBLE.

NEW MULTIGENERATIONAL RECREATION CENTER. COUNTY OF ROANOKE. ROANOKE, VIRGINIA. Includes logo for Southern Air Inc.

MOSELEY ARCHITECTS A PROFESSIONAL CORPORATION. 780 LYNNHAVEN PARKWAY, SUITE 200 VIRGINIA BEACH, VIRGINIA 23462. PHONE (757) 368-2800 FAX (757) 368-2233.

Wellness 201
Floor & Equipment
Outlets

Front Desk

201-70
LV6-28

201-71
LV6-28

201-72
LV6-28

201-73
LV6-28

~~201-39~~
LV7-42

~~201-38~~

201-29
LV7-29

201-30
LV7-27

201-31
LV7-25

201-32
LV7-23

201-33
LV7-21

201-34
LV7-19

201-35
LV7-17

201-36
LV7-15

201-37
LV7-13

201-38
LV7-11

~~Broken wire~~ 201-39
LV7-31

201-40
LV7-9

201-41
LV7-7

201-42
LV3-15

201-43
LV7-5

201-44
LV7-3

201-45
LV7-1

201-46
LV3-23

201-8
LV7-28

201-9
LV7-41

201-10
LV7-24

201-11
LV7-39

201-12
LV7-22

201-13
LV7-37

201-14
LV7-16

201-15
LV7-36

201-16
LV7-34

201-17
LV7-14

201-18
LV7-32

201-19
LV3-18

201-20
LV7-10

201-21
LV3-16

201-22
LV3-24

201-23
LV7-4

201-24
LV3-22

201-25
LV7-2

201-26
LV7-28

Knee Wall

LV6-25 201-1

LV6-27 201-2

LV6-23 201-2

LV6-21 201-2

LV6-19 201-3

LV6-17 201-3

LV6-13 201-4

LV6-15 201-4

LV6-11 201-5

LV6-9 201-5

LV6-7 201-6

LV6-5 201-6

LV6-3 201-7

LV6-1 201-7

Track

ENGLISH

Since 1919

Entered
1285 16110 002 00

615 Church Street
Lynchburg, VA 24504
Ph: (434) 845-0301

Submittal

Job: 1285
MULTIGENERATIONAL REC CTR-ROAN
ROANOKE COUNTY
PO BOX 29800
ROANOKE, VA 24018

Spec Section No: 16110
Submittal No: ~~1~~ 2
Revision No: 0
Sent Date:

Spec Section Title:
Submittal Title: Metallic Raceways

RECEIVED MAR 10 2009

Contractor:
English Construction Company, Inc
Kevin Hooper

Contractor's Stamp
REVIEWED
MAR 06 2009
ENGLISH CONSTRUCTION CO., INC.
BY: Cher St

Architect (Primary):
MOSELEY ARCHITECTS
RUSSELL GILES

Architect's Stamp
RECEIVED
MAR 09 2009
MOSELEY ARCHITECTS

Engineer's Stamp
SOUTHERN AIR, INC.
 APPROVED
 APPROVED AS CORRECTED
BY Noble
DATE 2/27/09

SMT. 107 DIV. 16 PROJECT. 461920



Submittal Identification

Submittal Number 308252-2

Project : New Multi. Gen. Rec. Ctr.
SAI Job Number : 308252
Submittal Date : January 15 2009
Spec Section # & Title: **16110 Metallic Raceways**
Submittal Description : **Metallic Raceways**
Manufacturer : Various

Salesman :
Vendor : Various

Phone : Fax :

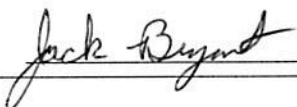
Engineer : Southern Air, Inc.
2655 Lakeside Drive
Lynchburg, VA 24501
Phone : 434-385-6200 Fax : 434-385-6209

Project Manager : Jack Bryant
Subcontractor : Southern Air, Inc.
6434 Peters Creek Rd
Roanoke, VA 24019
Phone : 540-362-3000 Fax : 540-362-4349

SOUTHERN AIR REVIEW:

The equipment and material shown and marked in this submittal is that proposed to be incorporated into this Project, is in compliance with the Contract Drawings and Specifications, unless otherwise shown in bold face type or letting and listed on a page or pages headed "DEPARTURES FROM DRAWINGS AND SPECIFICATIONS", (if applicable) and can be installed in the allocated spaces.

Reviewed by



Date

3/5/09

CAPITAL LIGHTING & SUPPLY

FARMVILLE , VA.

PHONE- 434-392-1650

FAX-434-392-7334

RACEWAY SUBMITTALS

FOR

ROANOKE MULTIGENERATIONAL
& RECREATION CENTER

CONTRACTOR

SOUTHERN AIR INC.

Raceway Solutions Quotation

Quote No: DFC-020209-01 Rev 3

Dennis Filiges Co., Inc 238 Center Dr., Chicora, PA. 16025
 Date: 2-10-09
 Job Name: Multigenerational Recreation Center
 Location: VA
 Contractor:
 Agent:

Freight Terms:

Qty	Catalog Number	Description	Price
17	OKA/3-1/4 x 12-3C-1/4	Three Compt Trench Duct 3-1/4 x 12 x 72 with 1/4 Cover	
1	OKT/3-1/4 x 12-3C-1/4	Three Compt Trench Duct T unit 3-1/4 x 12	
1	OKSER/D12S	Sweep Vertical Riser	
2	OK-HOOD	Access Hood for Trench	
3	OKE/B12	Trench Duct End Cap 2-1/2 x 12	
1	OWA/D12S	Wall Duct 3-1/2 x 12 x 60 with Surface Covers	
1	OWF/D12	Wall Duct Cabinet Connector	
55	203F-15-24	Three Compt Duct with 1-1/2" High Three Gang Inserts 24" OC	
120	203-DCS	Duct Coupler Supports	
10	203-ECS	End Cap Supports	
3	203F-JB-15	Three Compt Junction Box for 1-1/2" Insert Height	
5	SPOKA-CROSS/3-1/4 x 12-203F	Trench to Duct Fitting	
2	SPOKA-CROSS/THRU/3-1/4 x 12-203F	Trench to Duct Fitting	
120	FA-CA-1G-AL	Aluminum Single Gang Carpet Flange	
70	FA-MCP-GFCI-AL	Aluminum Cover Plate with 1 Flip Lid	
50	FA-MCP-FDP-AL	Aluminum Cover Plate with 2 Flip Lids for Duplex	

Note:

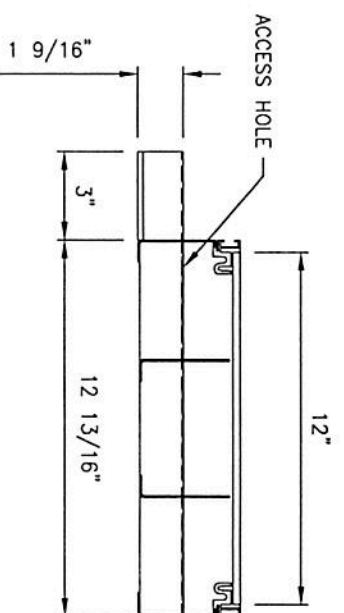
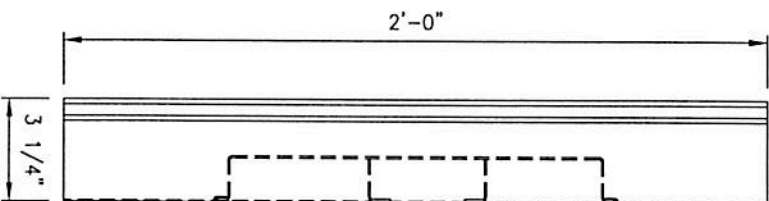
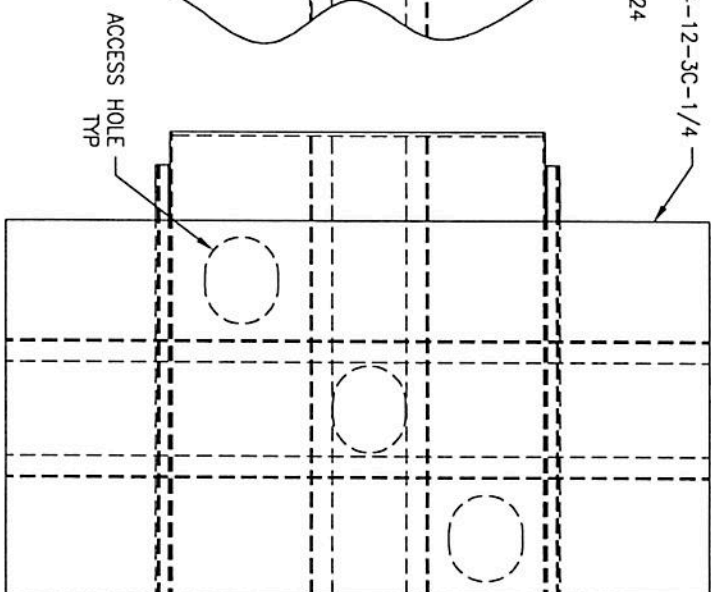
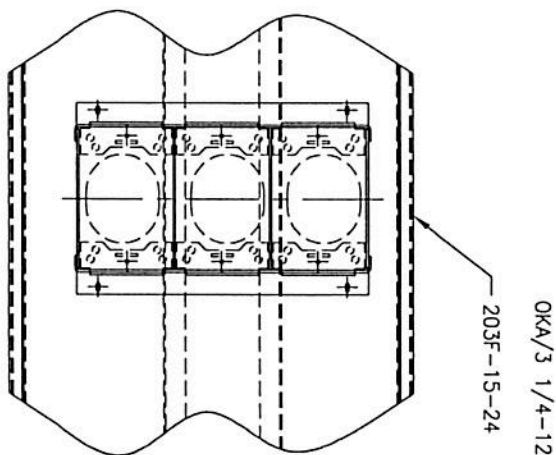
Quotation is based on information provided and is not guaranteed for a complete installation

Quotation is valid for 30 days

No Returns accepted on Lot Priced Material

Prices quoted do not include State, Municipal, Federal sales or Excise Taxes

Lead Time Shipment 13-15 Work Days ARO



NOTE:
 UNLESS OTHERWISE NOTED, THE DIMENSIONS SHALL BE INCHES AND
 TOLERANCES SHALL BE AS FOLLOWS: FINISHES: ± 1/16\"/>

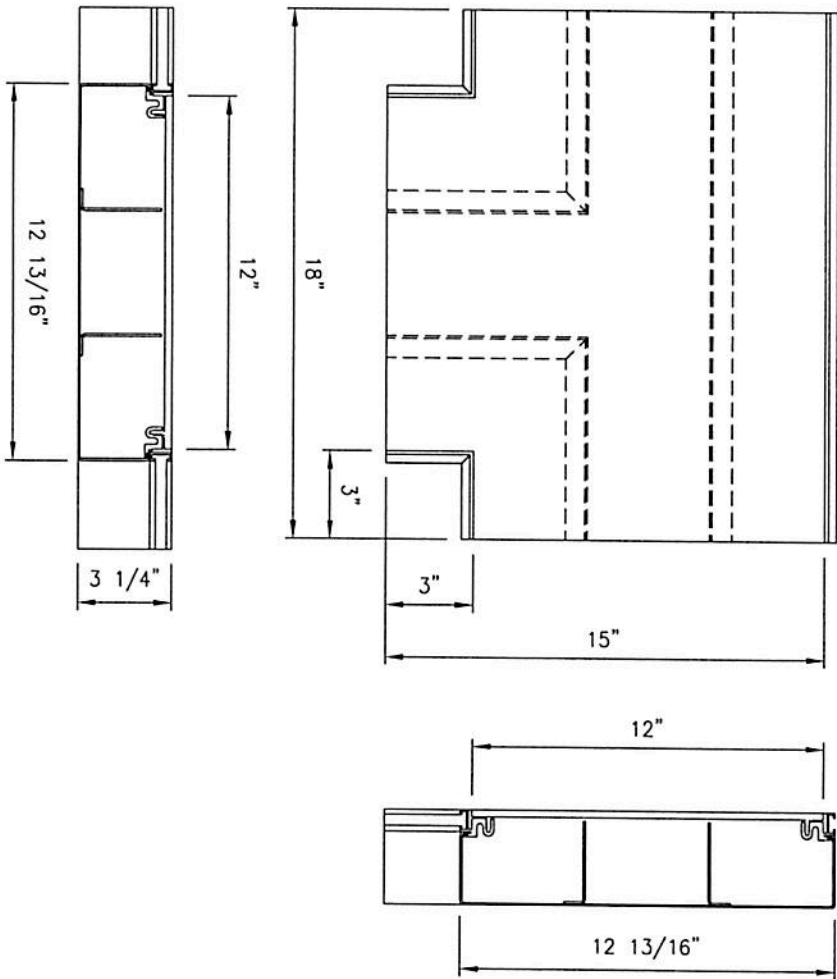
REV	DATE	DESCRIPTION	BY	CHKD BY

FILGES
 INDOOR SOLUTIONS
 238 CENTER DRIVE
 CHICAGO, IL 60605
 PHONE: 774-285-8112
 FAX: 774-285-8117
 URL: www.filges.com

THIS DRAWING IS THE PROPERTY OF INDOOR SOLUTIONS
 AND IS NOT TO BE REPRODUCED OR TRANSMITTED IN ANY FORM OR BY ANY MEANS, ELECTRONIC OR MECHANICAL, WITHOUT THE WRITTEN PERMISSION OF INDOOR SOLUTIONS.

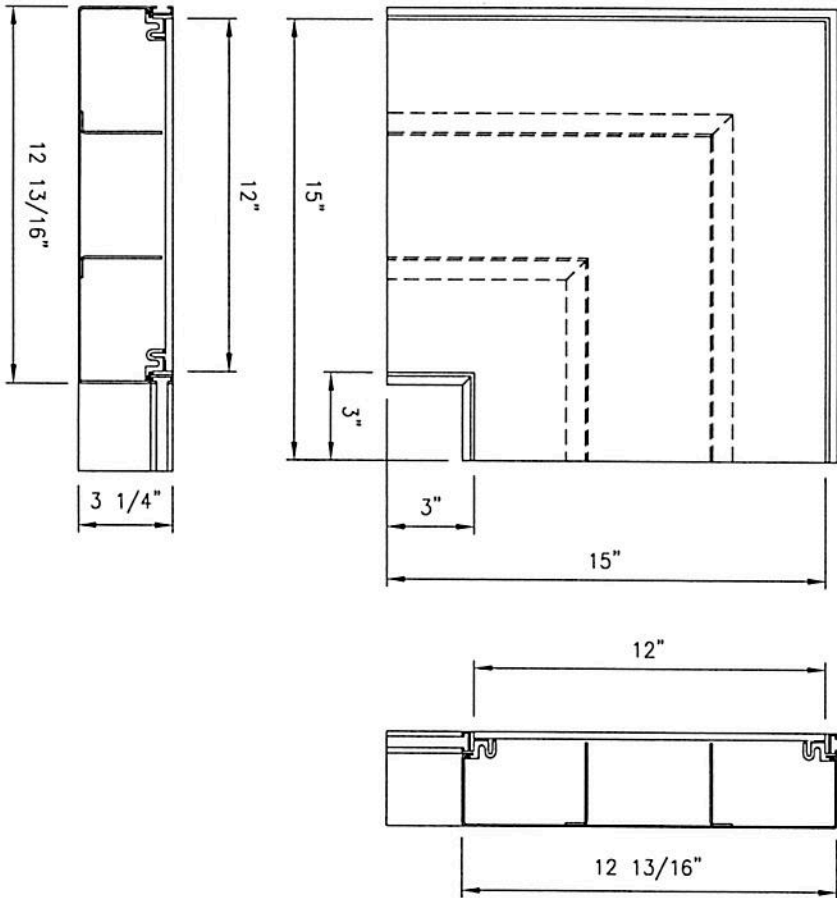
CROSS DUCT

SCALE: 1/2"	DATE: 03/14/12
DRAWN BY: JSS	PROJECT: 31004-CROSS/
CHKD BY: JSS	3 1/4-12-20JF
DATE: 03/14/12	SHEET 1 OF 1



NOTE:
 UNLESS OTHERWISE NOTED THE DIMENSIONS SHALL BE INCHES AND
 THE FOLLOWING TOLERANCES SHALL APPLY: 1'-2' ±1/16"; 2'-10"
 ±1/8"; 10'-20' ±1/4"; AND OVER 20' ±1/2".
 DECIMALS: 3 PLACES ±.005; 2 PLACES ±.01; 1 PLACE ±.1"
 ANGLES: UNNOTED ±1/2°; OTHERS ±1°

		238 CENTER DRIVE CHICORA, PA 16023 PH: 724-281-3733 FAX: 724-281-4172 EMAIL: www.filges.com	
NO DIMENSIONS IN THE PROJECTIONS OF ANCHOR BOLTS AND SHALL NOT BE REPRODUCED OR OTHERWISE REPRODUCED IN ANY MANNER WITHOUT THE WRITTEN PERMISSION OF FILGES SOLUTIONS		TITLE SINGLE LEVEL T⁺ JUNCTION FITTING	
SCALE: 1/2"	DRAWN BY: 222	CHECKED BY: 1/4-JC-1/4-12	REV: 1
DATE: 02/22/12	ISSUED BY: 222	PROJECT: 1/4-JC-1/4-12	SHEET 1 OF 1



NOTE:
 UNLESS OTHERWISE NOTED, THE DIMENSIONS SHALL BE INCHES AND
 TOLERANCES SHALL BE AS FOLLOWS:
 FINISHED SURFACES: ±.005"
 UNFINISHED ±.004"
 HOLE ±.004"
 THREADED ±.004"
 DIMENSIONS: 1'-0" - ±.005"; 1'-2" - ±.005"; 2'-0" - ±.005"
 DIMENSIONS: 3 PLACES ±.005", 2 PLACES ±.007", 1 PLACE ±.01"
 ANGLES: UNFINISHED ±1/2°, OTHERS ±1°

REV	DATE	DESCRIPTION	BY	CHKD BY	APP'D

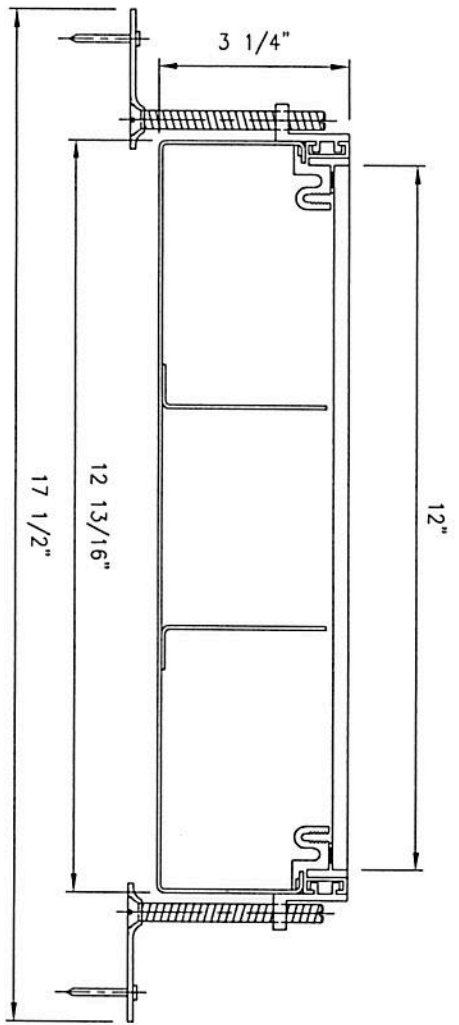
FLIGES
 MECHANICAL SOLUTIONS
 THE DIVISION OF THE CORPORATION OF MECHANICAL SOLUTIONS
 1100 WEST 10TH AVENUE, SUITE 100
 DENVER, COLORADO 80202

238 CENTER DRIVE
 DENVER, CO 80225
 PHONE: 724-285-8112
 FAX: 724-285-8113
 EMAIL: www.fliges.com

HORIZONTAL T-JUNCTION FITTING

SCALE	DATE
1/4" = 1"	06/23 1/4-30-1/4-12
REV	

SHEET 1 OF 1



14 GAUGE GALV BODY
 .250" COVER CARBON STEEL

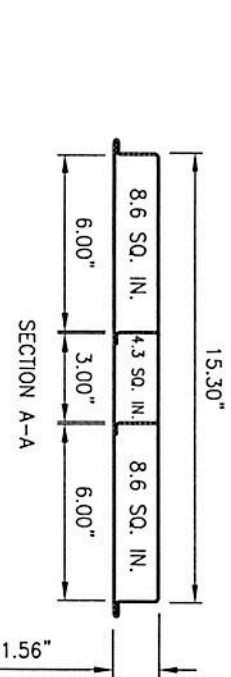
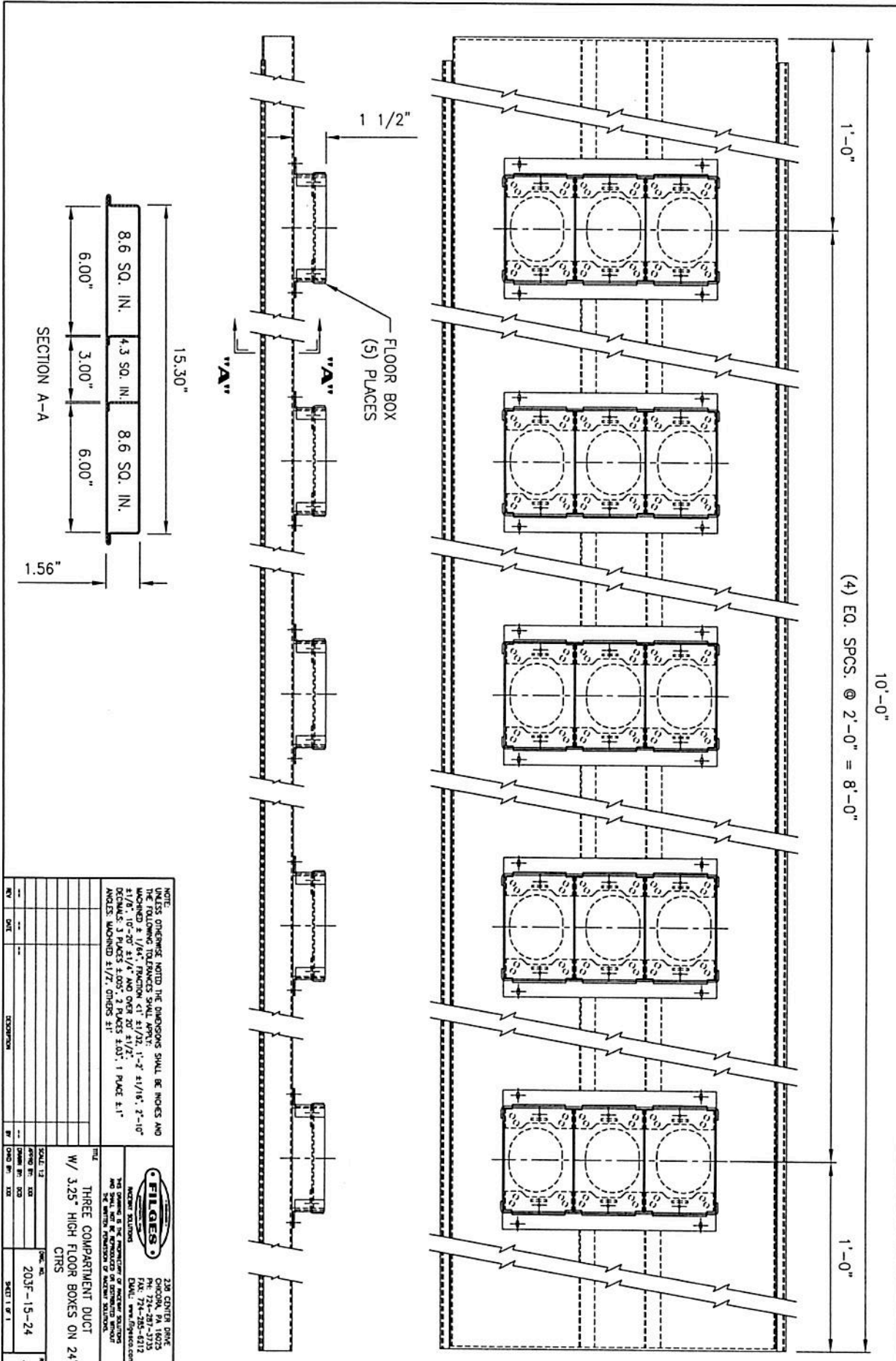
NOTE:
 UNLESS OTHERWISE NOTED THE DIMENSIONS SHALL BE INCHES AND THE FOLLOWING TOLERANCES SHALL APPLY:
 MACHINED ± 1/64" FRACTION <1' ±1/32, 1'-2' ±1/16", 2'-10' ±1/8", 10'-20' ±1/4" AND OVER 20' ±1/2".
 DECIMALS: 3 PLACES ±.005", 2 PLACES ±.03", 1 PLACE ±.1"
 ANGLES: MACHINED ±1/2', OTHERS ±1'

REV	DATE	DESCRIPTION	BY
H	--	--	--
G	--	--	--
F	--	--	--
E	--	--	--
D	--	--	--
C	--	--	--
B	--	--	--
A	--	--	--

FILIGES
 RACKWAY SOLUTIONS
 238 CENTER DRIVE
 CHICORA, PA 16025
 PH: 724-287-3735
 FAX: 724-285-6212
 EMAIL: www.filigesco.com

THIS DRAWING IS THE PROPRIETARY OF RACKWAY SOLUTIONS AND SHALL NOT BE REPRODUCED OR DISTRIBUTED WITHOUT THE WRITTEN PERMISSION OF RACKWAY SOLUTIONS.

TITLE		SCALE: 1:2		DWG. NO.	
FLOOR COVER		APPRO. BY: XXX		OKA/3 1/4-12-3C-1/4	
		DRAWN BY: DCD		SHEET 1 OF 1	
		CMD. BY: XXX		REV	



NOTE:
UNLESS OTHERWISE NOTED THE DIMENSIONS SHALL BE INCHES AND
THE FOLLOWING TOLERANCES SHALL APPLY: .005" ± .005" ± 1/16", 2"-10"
± 1/8", 10"-20" ± 1/4" AND OVER 20" ± 1/2".
DECIMALS: 3 PLACES ± .005", 2 PLACES ± .03", 1 PLACE ± .1"
ANGLES: UNNOTED ± 1/2°, OTHERS ± 1°

REV	DATE	DESCRIPTION	BY	CHKD BY

SCALE: 1/2" = 1'-0"

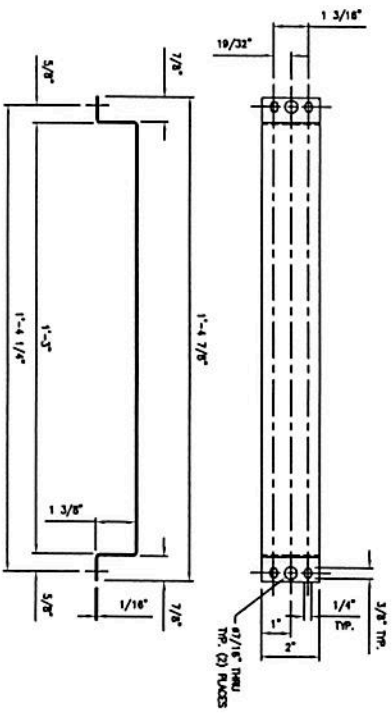
PROJECT NO. 203F-15-24

SHEET 1 OF 1

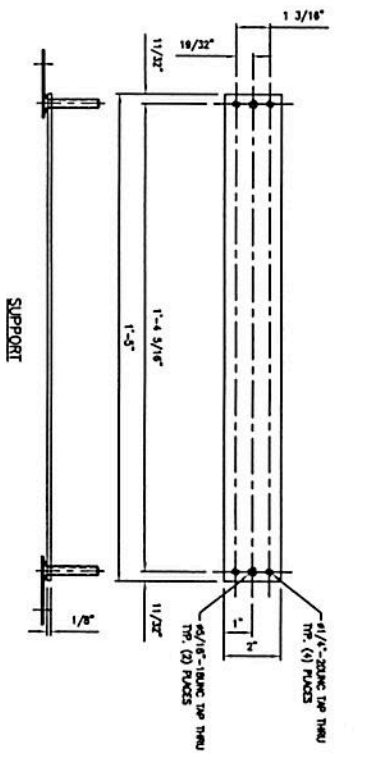
FIGURES
INCORPORATING
THIS DRAWING IS THE PROPERTY OF FIGURES SOLUTIONS
AND SHALL NOT BE REPRODUCED OR DISTRIBUTED WITHOUT
THE WRITTEN PERMISSION OF FIGURES SOLUTIONS.

238 CENTER DRIVE
CHOCOMA, PA 18025
TEL: 717-234-4215
FAX: 717-234-4215
EMAIL: sales@figures.com

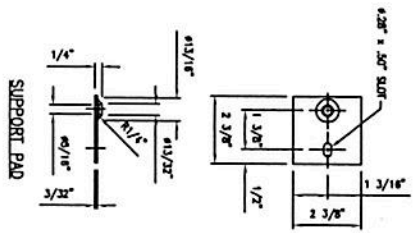
THREE COMPARTMENT DUCT
W/ 3.25" HIGH FLOOR BOXES ON 24"
CENTERS



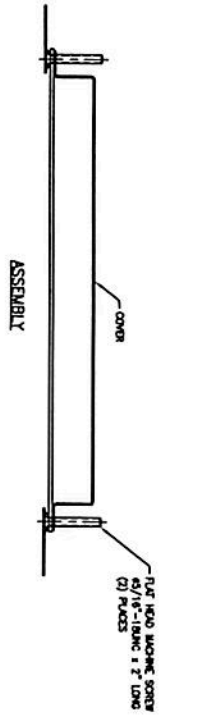
COVER



SUPPORT



SUPPORT PAD



ASSEMBLY

NOTE:
 1. DIMENSIONS AND THE DIMENSIONS SHALL BE INCHES AND
 THE FOLLOWING TOLERANCES SHALL APPLY:
 FINISHED & 1/64\"/>

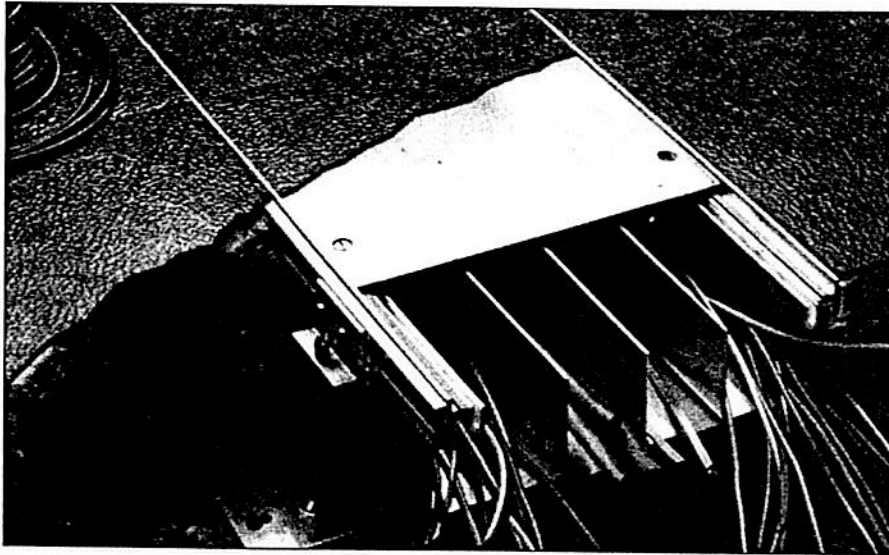
REV	DATE	DESCRIPTION	BY	CHKD BY	DATE	SCALE	SHEET NO.	TOTAL SHEETS
1							203-DCS	

FILE GIES
 RECEIVING SOLUTION
 238 CENTER DRIVE
 SUITE 100
 FARMINGTON, CT 06030
 TEL: 781-253-4112
 FAX: 781-253-4112
 WWW.FILEGIES.COM

**COUPLER/SUPPORTS
 THREE AND FOUR
 CELL DUCT**

Raceway Solutions™

Trench Duct



A High-Capacity Trench System for In-Floor Wire Management

The Raceway Solutions Trench System is an in-floor wire management system that meets today's high-capacity wiring needs that require multiple circuit separation. This system provides the raceways for which power, telecommunication and electronic circuitry can be supplied to multiple point-of-sale checkout counters, particularly those where a scanner is used or may be proposed.

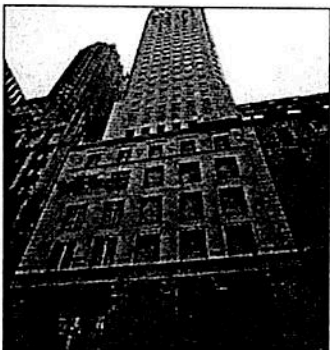
Because of its ability to protect dedicated power circuits to computers as well as distribute general power in the same system, it is ideal for use in all data processing centers. Ample additional capacity for electronic, telecommunications and local area network circuitry is available.

Features

- High Capacity Duct
- 14 gauge galvanized steel
- Aluminum trim frame
- Total Adjustability
- Standard 3/16" steel cover plate
- Threaded groove track
- Feeds Wall Duct systems
- UL Listed No. 884

Applications

- Commercial Buildings
- Retail Outlets
- Office Buildings
- Schools, Universities
- Shopping Centers



Multiple Compartments Provide More Capacity Than Conventional Ducts

The Raceway Solutions trench system provides more capacity than conventional conduits and ducts. It features a single, high-capacity duct with four compartments for easy placement of additional wiring.

Its open-top design allows wiring to be laid in the duct instead of being pulled, eliminating the need for junction boxes. Wiring can be run directly from the top of the duct to the outlet stations, eliminating service fittings that protrude above the floor.

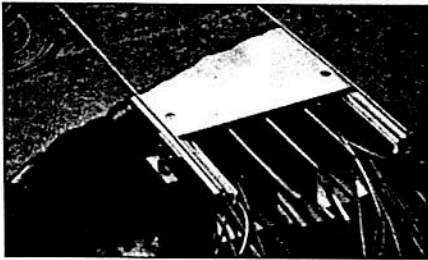
Removable covers are 3/16" thick and lock into the track of the trench preventing deflection under heavy loads.

Removable covers allow free access to wiring and can be placed anywhere along the duct for easy wire exit relocation.



Raceway Solutions™

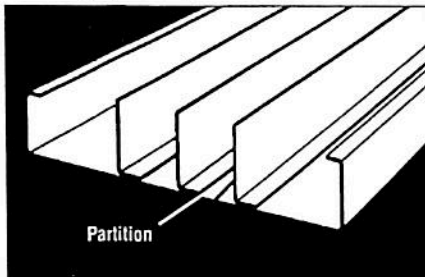
Trench Duct



Duct Frame

Duct frame includes fixed metal partitions that create multiple compartments in the duct. This feature permits a single duct to distribute power, electronics and communications. Duct with fewer partitions is available to meet your specifications and can be located in strategic places to meet special distribution requirements.

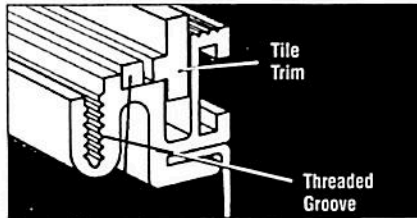
The duct frame is available in a variety of sizes. The frame is of 14 gauge galvanized steel and is supplied in standard 6' lengths. It can be cut to length which increases field flexibility and eliminates the need for ordering specialty fabricated material.



Track

The track of the structural assembly integrates the base aluminum profile with the tile trim, extruded rubber strip, and the duct support assembly. The track also provides the screed line for the concrete.

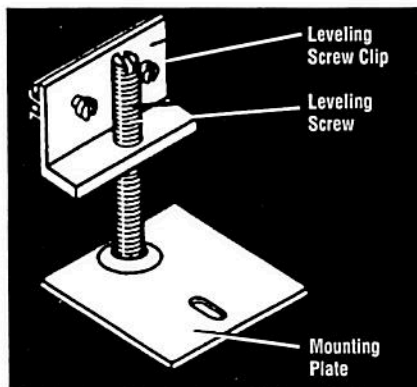
- The aluminum profile accepts and holds the duct frame, rubber cushion, and cover plate screws in addition to supporting the cover plate; it also acts as a runner for the leveling screw clips.



- The aluminum tile trim provides a finished edge for the tile, assists in cutting, and can be reversed when the trim is not required; can be reversed when carpet is used
- The extruded rubber gasket acts as a cushion, sound dampener and moisture barrier between the cover plate and the duct; meets U.L. moptight requirements

Duct Support Assembly

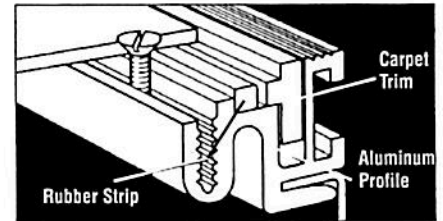
The unique duct support assembly provides one time leveling capability and acts as a splice for duct sections. The assembly consists of the leveling screw clip, mounting plate, and leveling screws, and is independent of the final support of the duct.



Leveling screw allows for 1" adjustment.

- The leveling screw clip integrates with the track and provides full adjustment along the length of the duct; it also acts as the splice for duct sections
- The heavy gauge mounting plate fastens duct to metal deck, rough slab, or wood/metal forms prior to pouring concrete; it adjusts to meet most floor and installation requirements.

- The leveling screws provide vertical adjustment of the duct prior to concrete pour; this allows the duct to be leveled to the screed line so only one pour is required



Cover

The cover plates for the Raceway Solutions Trench Duct are horizontally adjustable to any point along the duct. The 3/16" thick cover plates come in standard 24" lengths — three are provided per 6' duct section. A 1/4" thick cover plate is also available as a customer option.

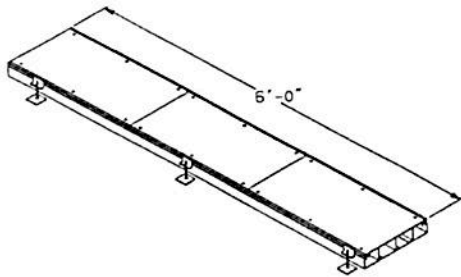
A special threaded groove on the track accepts the cover plate screws at any point along the duct, providing the cover unlimited adjustment. This special design relieves the installer from matching the duct frame sections with the covers, eliminating field cutting in most instances. This can substantially reduce installation and maintenance costs.

The cable exit may be installed on an exit fitting cover allowing cable to be easily pulled out and activated. The cable exit is reversible to provide accessibility from either direction. The standard cover plates may be removed and exit fitting covers installed for the cable exit.



Raceway Solutions™

Trench Duct



Raceway Solutions Trench Duct is manufactured in 6 foot lengths complete with three leveling feet on each side (OK/F-2-1/2), three cover plates 24" long (OKC) and three cover joint protectors (OK/DSD). The leveling feet (screw clips) permit 1" of vertical adjustment and act as section couplers. Additional vertical adjustment is available on order by increasing the length of the screw in the OK/F.

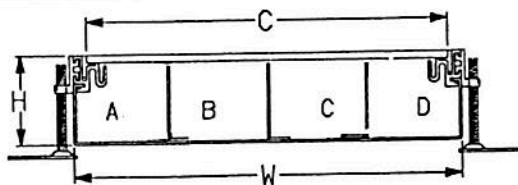
NOTE: All vertical adjustment should be made before the concrete is poured.

Duct Sections

Cat. No.	Cover Width (c)	Outside Dimensions (in.)		Compartment Area (sq.in.)				Cell Width (in.)			
		H	W	A	B	C	D	A	B	C	D
Four Compartment											
OKA/B12-4C	12	2½	12¾	6.6	6.6	6.6	6.6	3.15	3.15	3.15	3.15
Three Compartment											
OKA/B9-3C	9	2½	9¾	6.7	6.7	6.7	—	3.2	3.2	3.2	—
OKA/B12-3C	12	2½	12¾	8.8	8.8	8.8	—	4.2	4.2	4.2	—
OKA/C12-3C	12	3	12¾	10.9	10.9	10.9	—	4.2	4.2	4.2	—

UL Listing No. 884

Catalog Number System



OKA / **B** **12** **4C** - **AL** **1/4**

Trench Product
 OKA—Trench
 OKB—Pull Box
 OKC—Exit Cover
 OKE—End Cap
 OKL—Horizontal L
 OKR—Vertical Riser
 OKT—"T" Junction Box
 OKX—"X" Junction Box

Depth
 ½" Increments
 A = 2"
 B = 2½"
 C = 3"
 D = 3½"
 E = 4"
 J = 6"
 N = 8"
 *Other Depths Available

Width
 9, 12, 18, & 24
 Standard
 (Other Widths Available)

Number of Compartments
 1C = 1 Compartment
 2C = 2 Compartment
 3C = 3 Compartment
 4C = 4 Compartment

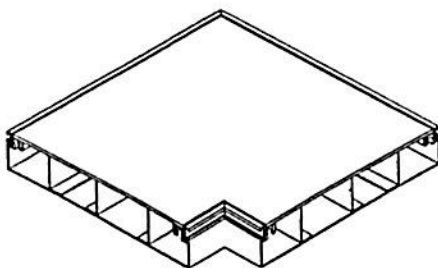
Aluminum (optional)

¼" Thick Cover Plate (optional)

Note: *Other depths and widths are available. Please consult factory for details. Also available in Aluminum.



Horizontal L Fitting



Manufactured with a single cover and matching compartments to form a 90° Horizontal L.

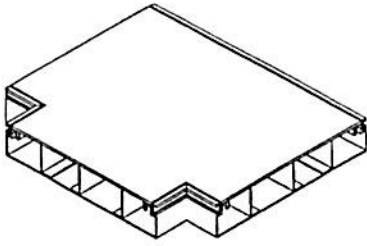
Cat. No.	Associated Trench	Outside Cover Dimension	No. of Compartments
OKL/B9-3C	OKA/B9-3C	12" x 12"	3
OKL/B12-4C	OKA/B12-4C	15" x 15"	4
OKL/C12-3C	OKA/C12-3C	15" x 15"	3
OKL/B12-3C	OKA/B12-3C	15" x 15"	3

Note: Table only an example of available sizes. Please refer to above for catalog number system.

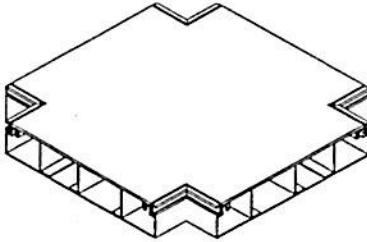


Raceway Solutions™

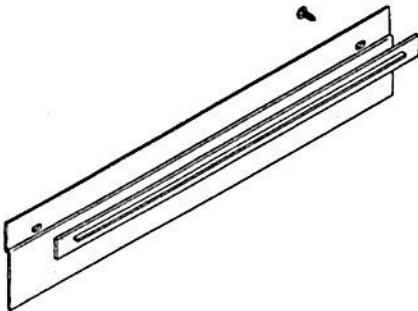
Trench Duct



Manufactured with internal partitions and crossovers to isolate power and communication.



Manufactured with internal partitions and crossovers to isolate power and communication.



Fits over end of trench run to close trench and prevent foreign material from entering. End cap may be drilled to accept conduit.

Single Level "T" Junction Fitting

Cat. No.	Cover Dimensions	Associated Trench
OKT/B9-3C	15" x 12"	OKA/B9-3C
OKT/B12-4C	18" x 15"	OKA/B12-4C
OKT/B12-3C	18" x 15"	OKA/B12-3C
OKT/C12-3C	18" x 15"	OKA/C12-3C

Note: Table only an example of available sizes. Please refer to page 26 for catalog number system.

Single Level "X" Junction Fitting

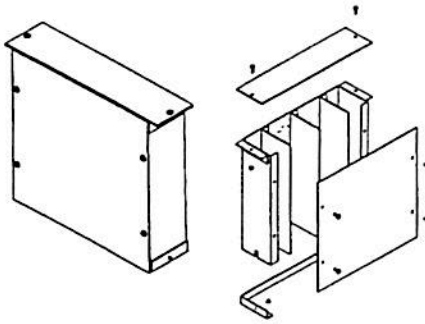
Cat. No.	Cover Dimensions	Associated Trench
OKX/B9-3C	15" x 15"	OKA/B9-3C
OKX/B12-4C	18" x 18"	OKA/B12-4C
OKX/B12-3C	18" x 18"	OKA/B12-3C
OKX/C12-3C	18" x 18"	OKA/C12-3C

End Cap

Cat. No.	Width	Maximum Conduit	Depth
OKE/B9	10"	1 1/4"	2 5/8"
OKE/B12	13"	1 1/4"	2 5/8"
OKE/C12	13"	2"	3 1/8"

Raceway Solutions™

Trench Duct

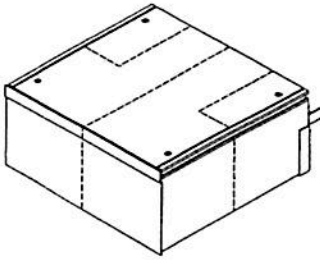


Manufactured to mount on trench in place of cover. Partitioned to separate cells and flanged to attach to pull box. Removable front cover and top cover. Standard height above finish floor—12 inches. Standard depth—3½ inches.

Vertical Riser Fitting

Cat. No.	Associated Trench	No. of Compartments	D	W	H
OKR/D9-3C	OKA/B9-3C	3	3½"	9"	12"
OKR/D12-4C	OKA/B12-4C	4	3½"	12"	12"
OKR/D12-3C	OKA/B12-3C OKA/C12-3C	3	3½"	12"	12"

Note: Table only an example of available sizes. Please refer to page 26 for catalog number system.

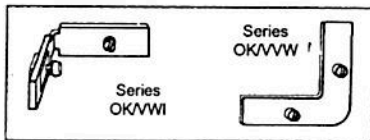
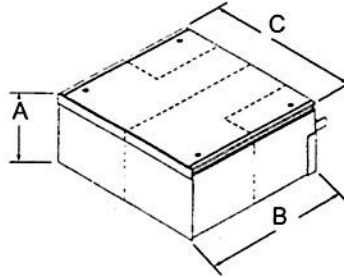


Manufactured to attach to trench section replacing end cap. Divided into compartment as shown. Additional depth permits attachment of larger conduit. Will accept up to 4" conduit. Box is field punched.

Pull Box

Cat. No.	Associated Trench	Dimensions		
		A	B	C
OKB/B9-3C	OKA/B9-3C	6"	12"	9"
OKB/B12-4C	OKA/B12-4C	6"	12"	12"
OKB/B12-3C	OKA/B12-3C	6"	12"	12"
OKB/C12-3C	OKA/C12-3C	6"	12"	12"

UL Listing No. 884



Accessories to join trench sections for field fabrication of horizontal and vertical assemblies.

Fastening Angles

Cat. No.	Description
OKVWI	Horizontal Angle
OKVWV	Vertical Angle



Raceway Solutions™

Wall Duct



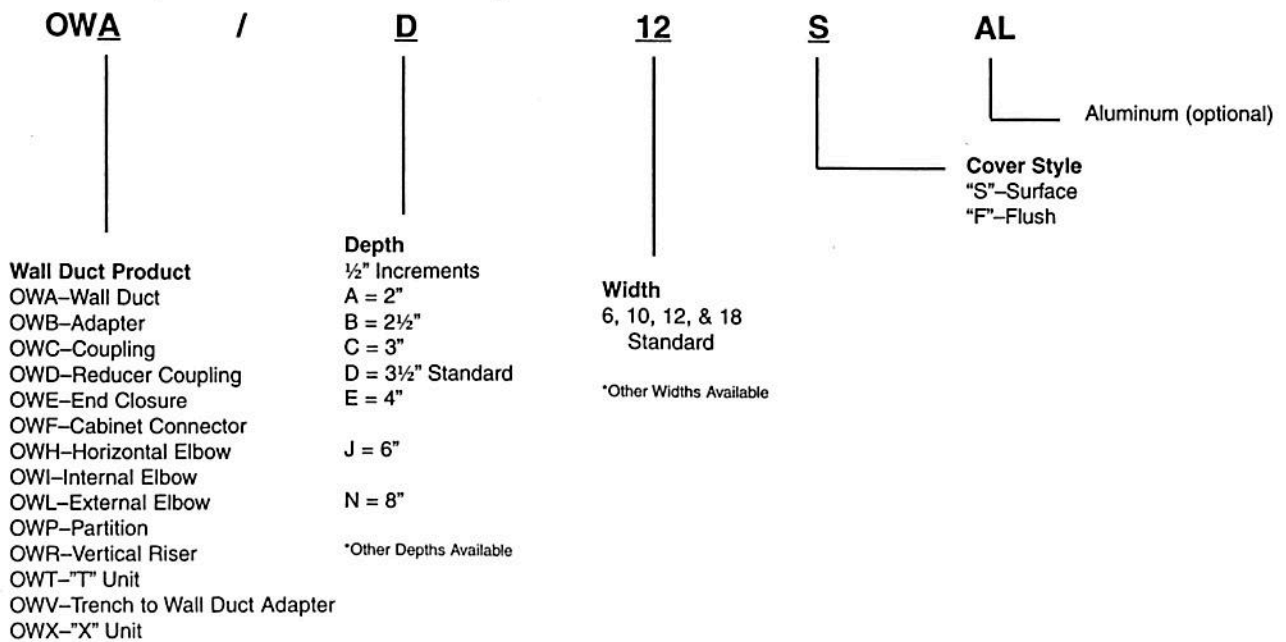
Flush or Surface Mounted Wiring System for X-Ray Rooms

Wall Duct is a steel raceway, approved by U.L. for the enclosure of wiring to X-ray machines in medical applications. The system provides complete lay-in wiring capability in order to accommodate the large cables and connectors used in today's installations.

Wall Duct, when used in combination with floor trench, provides protection for X-ray room wiring from control consoles to X-ray machines to power supplies to remote locations.

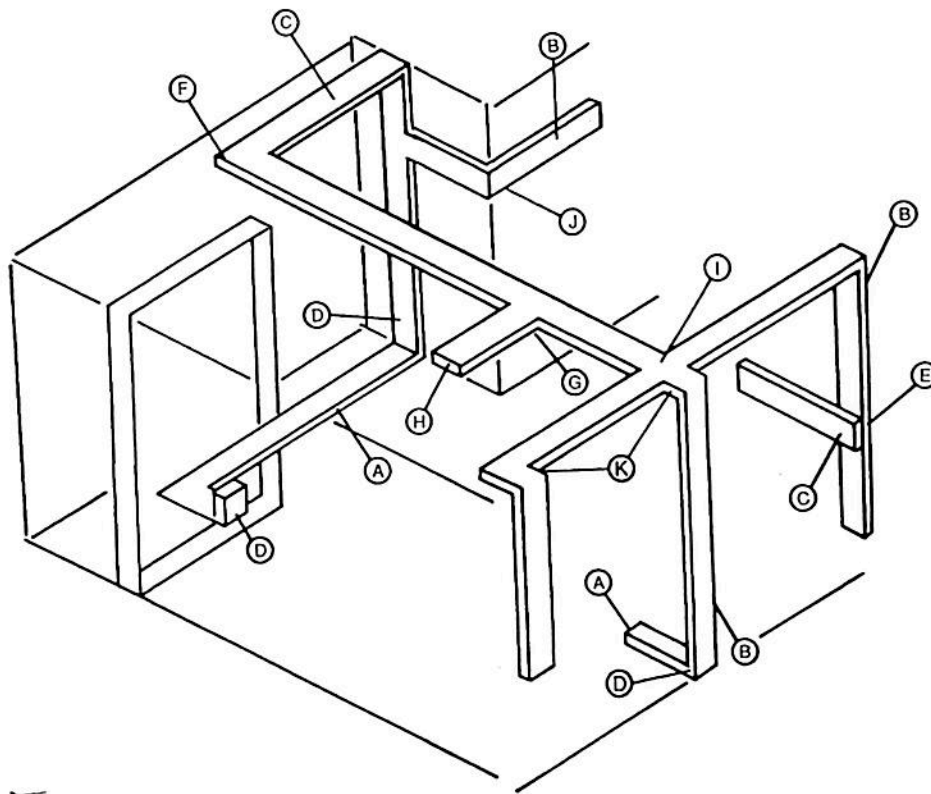
Wall Duct is available in either flush or surface mount and a combination will usually be required on any job. Vertical runs in the walls are usually flush mounted with horizontal runs on walls and all duct in ceiling plenum being surface type.

Catalog Number System



Raceway Solutions™

Wall Duct



Wall and Ceiling Duct Description

Wall Duct is manufactured of 14 gauge steel. Bodies are pre-galvanized G90-U and covers are dip painted. The covers may be field painted to match room interiors. Straight bodies are 5'0" long with two 30" coverplates.

Wall Duct is U.L. Listed under File Number: E116245

A. OKA/B12-3C—Trench 12" wide, 2½" deep, 3 compartment. See page 27.

B. OWA/D12F—Wall Duct -12" wide, 3½" deep, flush mounted. See page 37.

C. OWA/D12S—Wall Duct -12" wide, 3½" deep, surface mounted. See page 37.

D. OWR/D12F—Wall Duct Riser -12" wide, 3½" deep, flush mounted. See page 41.

E. OWB/D12-12—Wall Duct Flush to Surface Adapter -12" wide, 3½" deep flush mounted. See page 37.

F. OWH/D12S—Wall Duct 90° Horizontal Elbow -12" wide, 3½" deep, surface mounted. See page 39.

G. OWT/D12S—Wall Duct "T" Unit -12" wide, 3½" deep, surface mounted. See page 42.

H. OWE/D12S—Wall Duct End Closure -12" wide, 3½" deep, surface mounted. See page 38.

I. OWX/D12S—Wall Duct "X" Unit -12" wide, 3½" deep, surface mounted. See page 43.

J. OWL/D12F—Wall Duct External Elbow -12" wide, 3½" deep, flush mounted. See page 40.

K. OWI/D12F—Wall Duct Internal Elbow -12" wide, 3½" deep, flush mounted. See page 39.

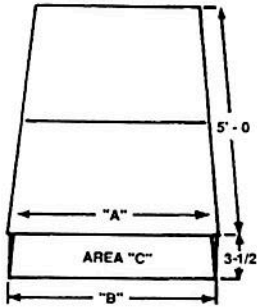
L. OWA/D18S—Wall Duct —18" wide, 3½" deep, surface mounted. See page 37.

M. OWA/D18F—Wall Duct —18" wide, 3½" deep, flush mounted. See page 37.



Raceway Solutions™

Wall Duct



12" or 18" wide x 3 1/2" deep x 60" long body with two 30" long coverplates. Each piece includes one coupling (Cat. No. OWC/D12 or OWC/D18) and necessary screws.

Wall and Ceiling Duct

Cat. No.	"A" Cover Width	"B" Body Width	"C" Area
OWA/D12S	12"	11 ³ / ₁₆ "	39 sq.in.
OWA/D18S	18"	17 ¹³ / ₁₆ "	59 sq.in.
OWA/D12F	14"	11 ³ / ₁₆ "	39 sq.in.
OWA/D18F	20"	17 ¹³ / ₁₆ "	59 sq.in.

May be field cut to required length. See installation instructions.

Material: 14 gauge pre-galvanized steel. Also available in aluminum. (consult factory)

UL Listing No. E116245

Note: Table only an example of available sizes. Other lengths, depths & widths are available. Please refer to page 35 for catalog number system.



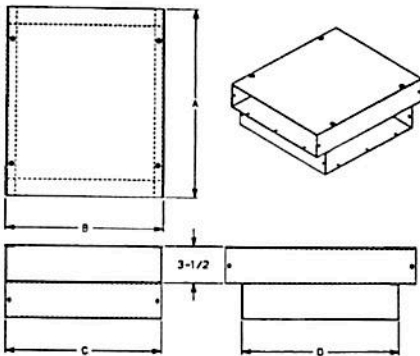
Flush to Surface Adapter

Cat. No.	A	B	C	D
OWB/D12-12	15"	12"	11 ³ / ₁₆ "	11 ³ / ₁₆ "
OWB/D12-18	15"	18"	17 ¹³ / ₁₆ "	11 ³ / ₁₆ "
OWB/D18-12	21"	12"	11 ³ / ₁₆ "	17 ¹³ / ₁₆ "
OWB/D18-18	21"	18"	17 ¹³ / ₁₆ "	17 ¹³ / ₁₆ "

Includes two couplings.

Material: 14 gauge pre-galvanized steel.

UL Listing No. E116245



To transition from surface raceway to flush delivery.



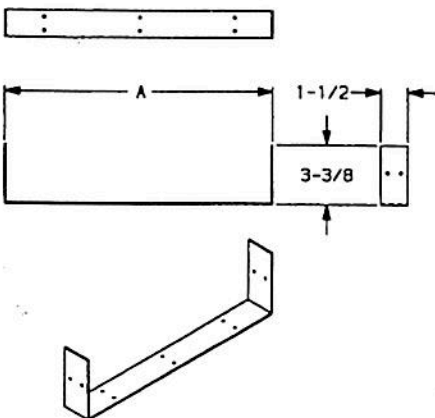
Coupling

Cat. No.	A
OWC/D12	12"
OWC/D18	18"

Screws included.

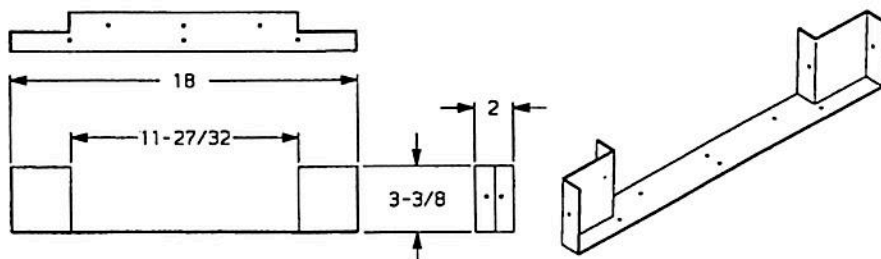
Material: 14 gauge pre-galvanized steel.

UL Listing No. E116245



Raceway Solutions™

Wall Duct



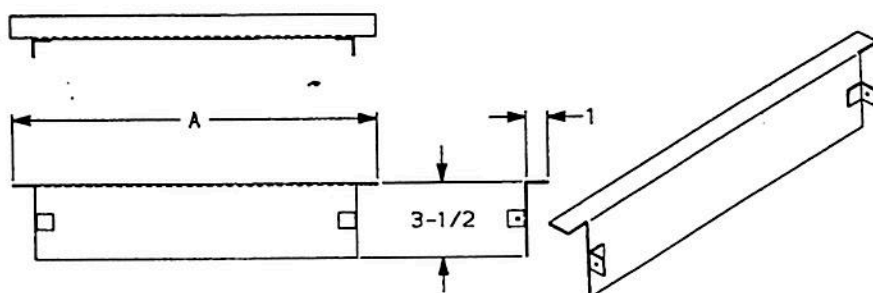
Reducer Coupling

Cat. No.	Description
OWD/D	Reduce from 18" to 12" duct

Screws included.

Material: 14 gauge pre-galvanized steel.

UL Listing No. E116245



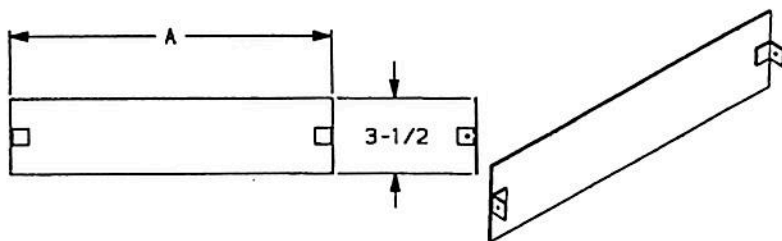
Flush End Closure

Cat. No.	A
OWE/D12F	14"
OWE/D18F	20"

Screws included.

Material: 14 gauge pre-galvanized steel.

UL Listing No. E116245



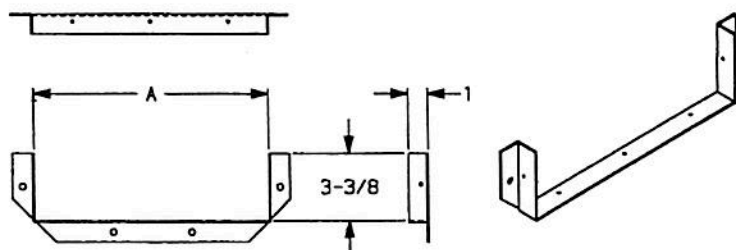
Surface End Closure

Cat. No.	A
OWE/D12S	12"
OWE/D18S	18"

Screws included.

Material: 14 gauge pre-galvanized steel.

UL Listing No. E116245



Cabinet Connector

Cat. No.	A
OWF/D12	11 3/8"
OWF/D18	17 3/8"

Material: 14 gauge pre-galvanized steel.

UL Listing No. E116245



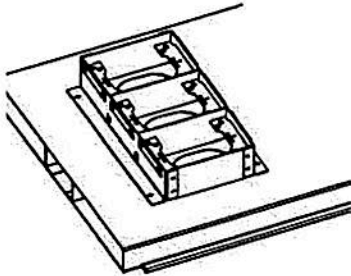
Raceway Solutions™

Flush Activation Underfloor Duct



Raceway Solutions Flush Activation Underfloor Duct provides an aesthetic wire management solution for delivering power and communications services. The new flush-style inserts, which use standard floor box covers for power and data outlets, make it the ideal underfloor duct solution for office environments, retail locations, casinos, and medical facilities. Raceway Solutions Flush Activation Underfloor Duct sets the standard for fast, easy installation by incorporating a unique one-piece duct design along with integral coupler/supports.

Raceway Solutions Flush Activation Underfloor Duct also sets the standard for application flexibility. The duct comes with activation inserts pre-assembled to the duct, or the inserts can be purchased separately for field installation only where you need them. Unique multi-gang inserts with removable voltage dividers provide the flexibility of installing multiple gangs of the same service at each insert location. In addition, the use of standard floor box covers enables a wide variety of power and data outlets.



Features & Benefits:

- **Available in 1-, 2-, and 3- compartment duct configurations**

Unique one-piece duct reduces installation labor.

Welded-in dividers create separate channels for power & communications services.

- **Unique multi-gang inserts offer application flexibility**

Removable voltage dividers allow multiple gangs of the same service at each insert location.

Individual gangs can be activated as needed – keeps costs down.

Afterset inserts are available for field installation – inserts only where you need them to minimize system cost.

- **Aesthetic, flush-mounted activation trims are available for both carpet and tile applications**

Brass, aluminum and nonmetallic trims are available.

Tile trims have after-pour adjustability to accommodate variations in tile thickness.

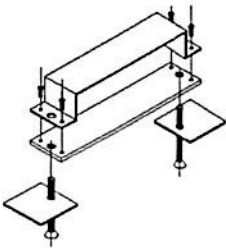
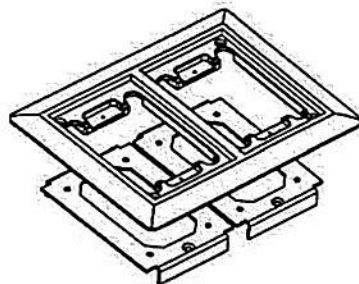
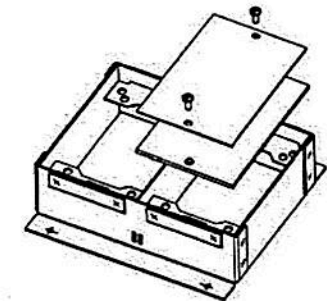
- **Activation trims accept standard Raceway Solutions Floor Box Covers**

Brass, aluminum and nonmetallic covers are available.

Complete cover offering accommodates a wide range of applications.

- **Combination coupler/supports simplify installation**

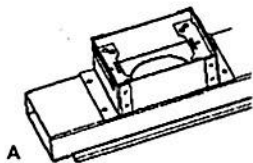
Same part is used to join raceway sections together and to support/level the duct – reduces labor & material.



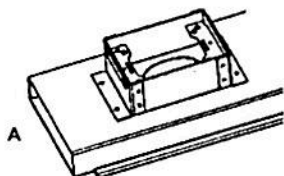
Raceway Solutions™

Flush Activation Underfloor Duct

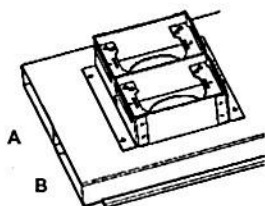
Catalog Number System



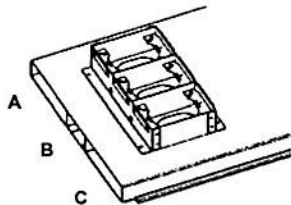
201F Series
Single Compartment



201WF Series
Wide Single Compartment



202F Series
Two Compartment



203F Series
Three Compartment

20_F

of Cells

- 1 = Single Cell
- 1W = Single Cell Wide
- 2 = Two Cell
- 3 = Three Cell

- 3 -

Insert Height

- B = Blank
- 15 = 1½" Height
- 2 = 2" Height
- 3 = 3" Height

12

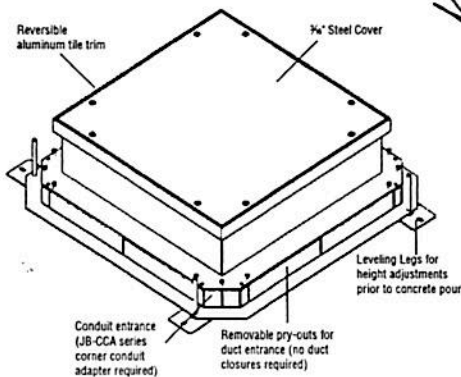
Insert Spacing

- 12 & 24 Standard
- 6, 18, & 36 (optional)

Duct Sections

Cat.No.	Duct Depth	Duct Width	Compartment Width	Insert Height	Insert Spacing
201-B	1½"	3¼"	A = 3¼"	(no inserts)	(no inserts)
201F-3-24	1½"	3¼"	A = 3¼"	3"	24"
201F-2-24	1½"	3¼"	A = 3¼"	2"	24"
201F-15-24	1½"	3¼"	A = 3¼"	1½"	24"
201F-3-12	1½"	3¼"	A = 3¼"	3"	12"
201F-2-12	1½"	3¼"	A = 3¼"	2"	12"
201F-15-12	1½"	3¼"	A = 3¼"	1½"	12"
201W-B	1½"	5¾"	A = 5¾"	(no inserts)	(no inserts)
201WF-3-24	1½"	5¾"	A = 5¾"	3"	24"
201WF-2-24	1½"	5¾"	A = 5¾"	2"	24"
201WF-15-24	1½"	5¾"	A = 5¾"	1½"	24"
201WF-3-12	1½"	5¾"	A = 5¾"	3"	12"
201WF-2-12	1½"	5¾"	A = 5¾"	2"	12"
201WF-15-12	1½"	5¾"	A = 5¾"	1½"	12"
202-B	1½"	10"	A & B = 5"	(no inserts)	(no inserts)
202F-3-24	1½"	10"	A & B = 5"	3"	24"
202F-2-24	1½"	10"	A & B = 5"	2"	24"
202F-15-24	1½"	10"	A & B = 5"	1½"	24"
202F-3-12	1½"	10"	A & B = 5"	3"	12"
202F-2-12	1½"	10"	A & B = 5"	2"	12"
202F-15-12	1½"	10"	A & B = 5"	1½"	12"
203F-B	1½"	15"	A & C = 6" B = 3"	(no inserts)	(no inserts)
203F-3-24	1½"	15"	A & C = 6" B = 3"	3"	24"
203F-2-24	1½"	15"	A & C = 6" B = 3"	2"	24"
203F-15-24	1½"	15"	A & C = 6" B = 3"	1½"	24"
203F-3-12	1½"	15"	A & C = 6" B = 3"	3"	12"
203F-2-12	1½"	15"	A & C = 6" B = 3"	2"	12"
203F-15-12	1½"	15"	A & C = 6" B = 3"	1½"	12"

All duct sections 10' long, 14 gauge pre-galvanized steel.



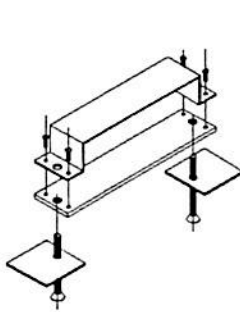
Junction Boxes

Cat. No.	Description
201-JB-3	Junction box for 201 Series Duct with 3" high inserts
201-JB-2	Junction box for 201 Series Duct with 2" high inserts
201-JB-15	Junction box for 201 Series Duct with 1½" high inserts
201W-JB-3	Junction box for 201W Series Duct with 3" high inserts
201W-JB-2	Junction box for 201W Series Duct with 2" high inserts
201W-JB-15	Junction box for 201W Series Duct with 1½" high inserts
202-JB-3	Junction box for 202 Series Duct with 3" high inserts
202-JB-2	Junction box for 202 Series Duct with 2" high inserts
202-JB-15	Junction box for 202 Series Duct with 1½" high inserts
203F-JB-3	Junction box for 203F Series Duct with 3" high inserts
203F-JB-2	Junction box for 203F Series Duct with 2" high inserts
203F-JB-15	Junction box for 203F Series Duct with 1½" high inserts



Raceway Solutions™

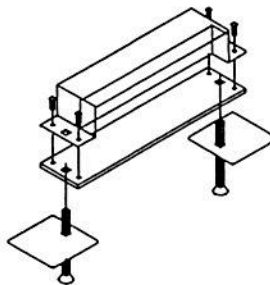
Flush Activation Underfloor Duct



Coupler/Support

Cat. No.	Description
201-DCS	Duct Coupler/Support for 201 Series Duct
201W-DCS	Duct Coupler/Support for 201W Series Duct
202-DCS	Duct Coupler/Support for 202 Series Duct
203-DCS	Duct Coupler/Support for 203F Series Duct

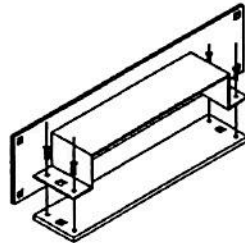
Provides means for coupling duct sections together and for supporting the duct system. It is recommended that a support/coupler be used every 5' of duct run.
Material: 14 gauge pre-galvanized steel



End Cap/Support

Cat. No.	Description
201-ECS	Duct End Cap/Support for 201 Series Duct
201W-ECS	Duct End Cap/Support for 201W Series Duct
202-ECS	Duct End Cap/Support for 202 Series Duct
203-ECS	Duct End Cap/Support for 203F Series Duct

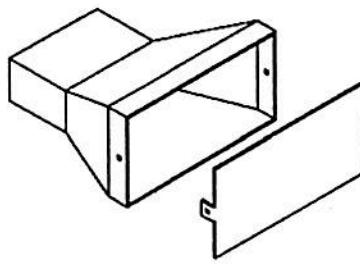
Provides means for supporting and closing off unused duct ends.
Material: 14 gauge pre-galvanized steel



Cabinet Connector

Cat. No.	Description
201-DCC	Duct Cabinet Connector for 201 Series Duct
201W-DCC	Duct Cabinet Connector for 201W Series Duct
202-DCC	Duct Cabinet Connector for 202 Series Duct
203-DCC	Duct Cabinet Connector for 203F Series Duct

Provides means for connecting duct to an electrical cabinet.
Material: 14 gauge pre-galvanized steel



Conduit Adapter

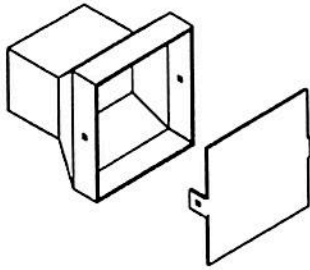
Cat. No.	Description
201-UCA	Universal Conduit Adapter for 201 Series Duct
201W-UCA	Universal Conduit Adapter for 201W Series Duct
202-UCA	Universal Conduit Adapter for 202 Series Duct
203F-UCA	Universal Conduit Adapter for 203F Series Duct

Provides means for attaching conduit to the underfloor duct system at the junction box. The conduit adapter is inserted into a main duct entrance. The blank cover can be field-punched for the required combination of conduits.
Material: 14 gauge pre-galvanized steel



Raceway Solutions™

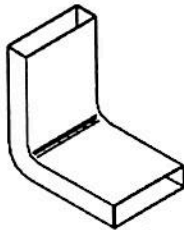
Flush Activation Underfloor Duct



Corner Conduit Adapter

Cat. No.	Description
JB-CCA-B	Corner Conduit Adapter with blank cover
JB-CCA-1/2	Corner Conduit Adapter with 1/2" KO
JB-CCA-3/4	Corner Conduit Adapter with 3/4" KO
JB-CCA-1	Corner Conduit Adapter with 1" KO
JB-CCA-1-1/2	Corner Conduit Adapter with 1 1/2" KO
JB-CCA-2	Corner Conduit Adapter with 2" KO

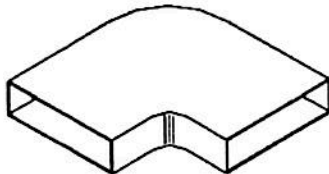
Provides means for attaching conduit to the underfloor duct system at the junction box. The corner conduit adapter is inserted into the corner conduit entrance of any size junction box.
Material: 14 gauge pre-galvanized steel



Vertical Elbow

Cat. No.	Description
201-VEL	Vertical Elbow for 201 Series Duct
201W-VEL	Vertical Elbow for 201W Series Duct
202-VEL	Vertical Elbow for 202 Series Duct
203F-VEL	Vertical Elbow for 203F Series Duct

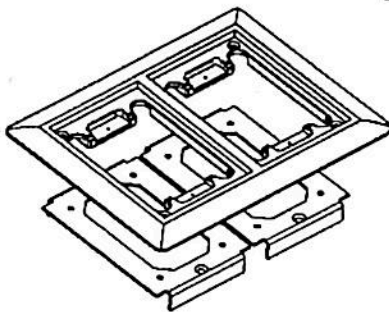
Material: 14 gauge pre-galvanized steel



Horizontal Elbow

Cat. No.	Description
201-HB90	Horizontal 90° Elbow for 201 Series Duct
201W-HB90	Horizontal 90° Elbow for 201W Series Duct
202-HB90	Horizontal 90° Elbow for 202 Series Duct
203F-HB90	Horizontal 90° Elbow for 203F Series Duct

Material: 14 gauge pre-galvanized steel

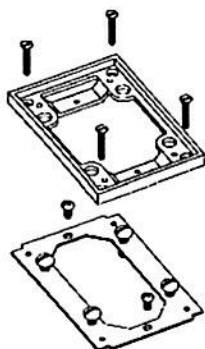


Carpet Activations

Cat. No.	Description	Color
FACA-1G-AL	1-Gang Carpet Activation	Aluminum
FACA-1G-B	1-Gang Carpet Activation	Brass
FACA-1G-BGE	1-Gang Carpet Activation	Nonmetallic - Beige
FACA-1G-BLK	1-Gang Carpet Activation	Nonmetallic - Black
FACA-1G-GRY	1-Gang Carpet Activation	Nonmetallic - Gray
FACA-2G-AL	2-Gang Carpet Activation	Aluminum
FACA-2G-B	2-Gang Carpet Activation	Brass
FACA-2G-BGE	2-Gang Carpet Activation	Nonmetallic - Beige
FACA-2G-BLK	2-Gang Carpet Activation	Nonmetallic - Black
FACA-2G-GRY	2-Gang Carpet Activation	Nonmetallic - Gray
FACA-3G-AL	3-Gang Carpet Activation	Aluminum
FACA-3G-B	3-Gang Carpet Activation	Brass
FACA-3G-BGE	3-Gang Carpet Activation	Nonmetallic - Beige
FACA-3G-BLK	3-Gang Carpet Activation	Nonmetallic - Black
FACA-3G-GRY	3-Gang Carpet Activation	Nonmetallic - Gray

Raceway Solutions™

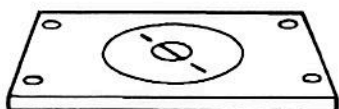
Flush Activation Underfloor Duct



Tile Activations

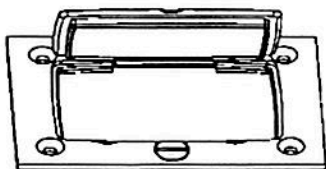
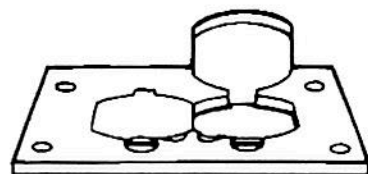
Cat. No.	Description	Color
FATA-AL	Tile Activation	Aluminum
FATA-B	Tile Activation	Brass
FATA-BGE	Tile Activation	Nonmetallic - Beige
FATA-BLK	Tile Activation	Nonmetallic - Black
FATA-GRY	Tile Activation	Nonmetallic - Gray

Note: One Tile Activation is required for each gang of the insert.
Provides means for height adjustment after the concrete pour to accommodate different tile thickness.



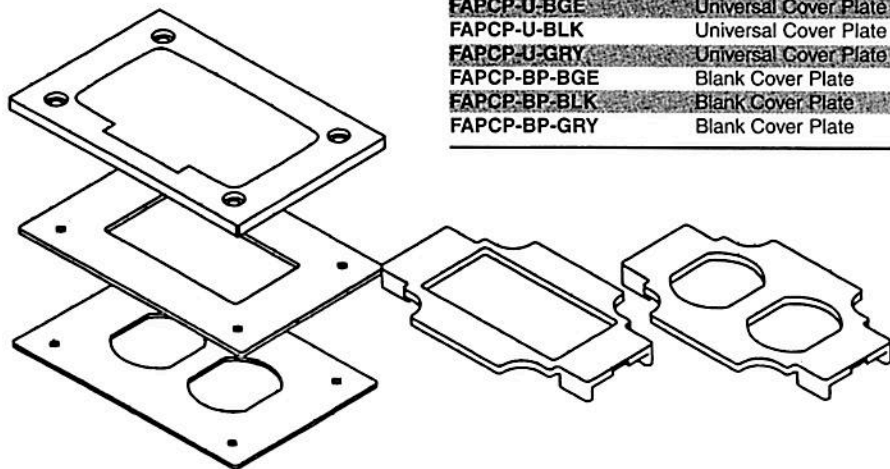
Metallic Covers

Cat. No.	Description	Color
FA-MCP-1/2-B	Cover Plate w/ 1/2" NPS Plug	Brass
FA-MCP-1/2-AL	Cover Plate w/ 1/2" NPS Plug	Aluminum
FA-MCP-3/4-B	Cover Plate w/ 3/4" NPS Plug	Brass
FA-MCP-3/4-AL	Cover Plate w/ 3/4" NPS Plug	Aluminum
FA-MCP-1-B	Cover Plate w/ 1" NPS Plug	Brass
FA-MCP-1-AL	Cover Plate w/ 1" NPS Plug	Aluminum
FA-MCP-1-1/4-B	Cover Plate w/ 1 1/4" NPS Plug	Brass
FA-MCP-1-1/4-AL	Cover Plate w/ 1 1/4" NPS Plug	Aluminum
FA-MCP-2-B	Cover Plate w/ 2" UN plug	Brass
FA-MCP-2-AL	Cover Plate w/ 2" UN plug	Aluminum
FA-MCP-1/2-2-B	Cover Plate w/ 2" UN & 1/2" NPS plugs	Brass
FA-MCP-1/2-2-AL	Cover Plate w/ 2" UN & 1/2" NPS plugs	Aluminum
FA-MCP-3/4-2-B	Cover Plate w/ 2" UN & 3/4" NPS plug	Brass
FA-MCP-3/4-2-AL	Cover Plate w/ 2" UN & 3/4" NPS plug	Aluminum
FA-MCP-2-5/8-B	Cover Plate w/ 2 5/8" UN plug	Brass
FA-MCP-2-5/8-AL	Cover Plate w/ 2 5/8" UN plug	Aluminum
FA-MCP-DP-B	Cover Plate w/ Two 1 7/16" Plugs for Duplex	Brass
FA-MCP-DP-AL	Cover Plate w/ Two 1 7/16" Plugs for Duplex	Aluminum
FA-MCP-FDP-B	Cover Plate w/ Two Flip Lids for Duplex	Brass
FA-MCP-FDP-AL	Cover Plate w/ Two Flip Lids for Duplex	Aluminum
FA-MCP-GFCI-B	Cover Plate w/ One Flip Lid for GFCI	Brass



Nonmetallic Covers

Cat. No.	Description	Color
FAPCP-U-BGE	Universal Cover Plate for Duplex & GFCI	Beige
FAPCP-U-BLK	Universal Cover Plate for Duplex & GFCI	Black
FAPCP-U-GRY	Universal Cover Plate for Duplex & GFCI	Gray
FAPCP-BP-BGE	Blank Cover Plate	Beige
FAPCP-BP-BLK	Blank Cover Plate	Black
FAPCP-BP-GRY	Blank Cover Plate	Gray



CM SERIES COMMUNICATION MODULES

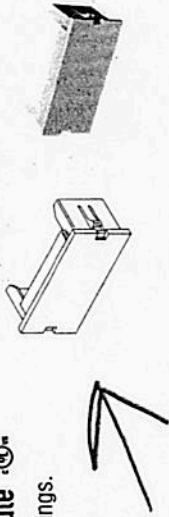
Blank Modules & End Plates

WIREMOLD

legrand

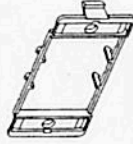
CM2-BL* 2A Blank Module

Required to fill unused openings.



CM-EPLA/CM-EPLA-G/CM-EPLA-WH End Plate

End plates with two outlet ID labels with clear covers and two matching screw covers. Required when mounting modules into 4050, 5450, 5550, and WSA07-4A device mounting brackets, and the V2444D-2A and 2344SD-2A 2-gang divided raceway box.



CM SERIES COMMUNICATION MODULES

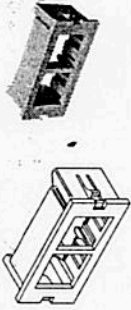
Discrete Jack/Open System Modules

WIREMOLD

legrand

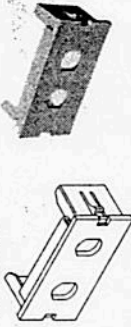
CM2-U2NOR* 2A Dual Flushmount NORDX Unloaded Module

Accepts MIDVOFlex jacks and fiber modules.



CM2-U2ST* 2A Dual Unloaded ST Adapter Module

Accepts two ST adapters.



CM2-U2SC* 2A Unloaded Duplex SC Adapter Module

Accepts one duplex SC adapter.



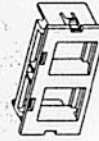
CM2-U2TJ 2A Dual Flushmount Unloaded Ortronics® Tracjack Module

For mounting two TracJack devices.



CM2-U2AMP 2A Unloaded Single AMP NETCONNECT Module

For mounting two AMP NETCONNECT SL Series devices.



* Standard color is Ivory; for other colors, add one of the following: "-WH" for white, "-GY" for light gray (matches aluminum and nonmetallic products), "-BK" for black, "-G" for gray (matches Wiremold gray steel products).



* Standard color is Ivory; for other colors, add one of the following: "-WH" for white, "-GY" for light gray (matches aluminum and nonmetallic products), "-BK" for black, "-G" for gray (matches Wiremold gray steel products).

WIREMOLD



CM SERIES COMMUNICATION MODULES

Specialty Mounting Bezels & Adapters

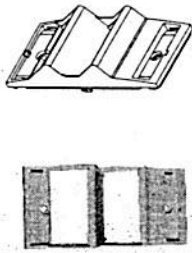
CM-MAB 6A MINI Adapter Bezel

6A opening. Must be purchased separately for mounting communication modules in Walker service fittings where it is indicated they are not included. (Available in Ivory only.)



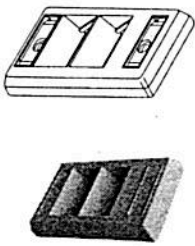
CM-ARA* Angled Raceway Adapter

For use with multi-channel raceway device brackets and WallSource device mounting brackets. Angled exit provides additional mounting depth required for audio/visual connections as well as ensuring the required bend radius for UTP and fiber optic cabling. Holds two CM2 Series modules or two 2A inserts.



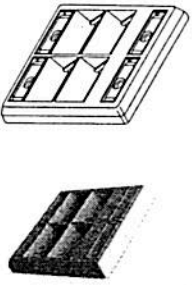
CM-SAP* Single-Gang Angled Faceplate

For mounting two CM2 Series modules or Pass & Seymour Activate Series device modules.



CM-DAP* Double-Gang Angled Faceplate

For mounting four CM2 Series modules or Pass & Seymour Activate Series device modules.



WIREMOLD

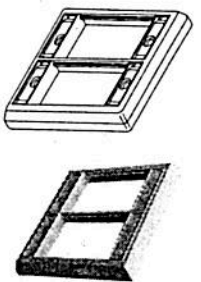


CM SERIES COMMUNICATION MODULES

Specialty Mounting Bezels & Adapters

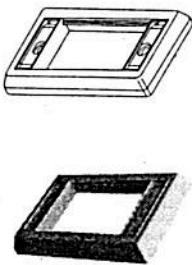
CM-DFP* Double-Gang Faceplate

For mounting six CM2 Series modules or Pass & Seymour Activate Series device modules.



CM-SFP* Single-Gang Faceplate

For mounting three CM2 Series modules or Pass & Seymour Activate Series device modules.



* Standard color is Ivory; for other colors, add one of the following: "-WH" for white, "-GY" for light gray (matches aluminum and nonmetallic products), "-BK" for black, "-G" for gray (matches Wiremold gray steel products).

* Standard color is Ivory; for other colors, add one of the following: "-WH" for white, "-GY" for light gray (matches aluminum and nonmetallic products), "-BK" for black, "-G" for gray (matches Wiremold gray steel products).