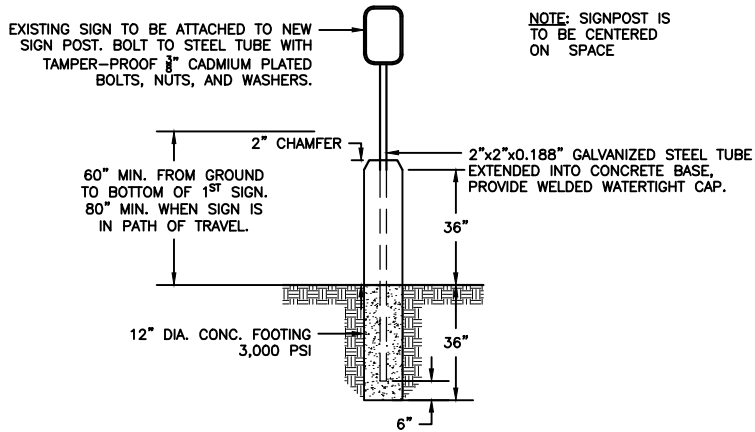


# DETAILS



## SIGNPOST DETAIL

N.T.S.

# LEGEND

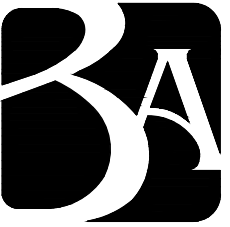
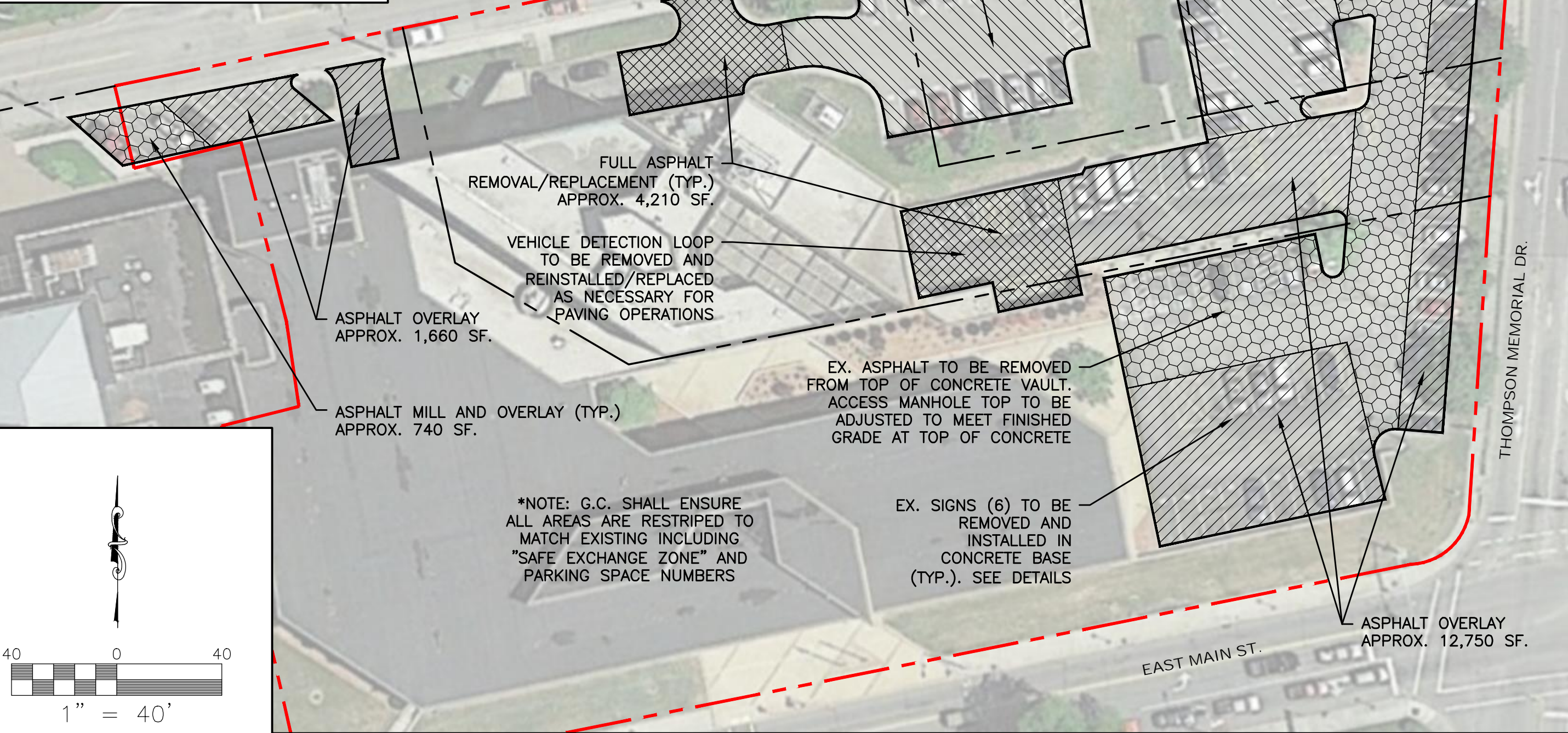
 FULL ASPHALT REMOVAL/REPLACEMENT

 ASPHALT MILL AND OVERLAY

 ASPHALT OVERLAY

 SEAL COAT

\*SEE SPECS FOR ADDITIONAL DETAILS



**BALZER & ASSOCIATES**  
PLANNERS / ARCHITECTS  
ENGINEERS / SURVEYORS

Roanoke / Richmond  
New River Valley / Staunton  
Harrisonburg / Lynchburg

[www.balzer.cc](http://www.balzer.cc)

1208 Corporate Circle  
Roanoke, VA 24018  
540.772.9580

## ROANOKE COUNTY COURTHOUSE PAVING PLAN

### PAVING PLAN

305 E MAIN ST  
CITY OF SALEM, VA

DATE 3/24/2021  
SCALE 1" = 40'  
REVISIONS

**EX-A**

PROJECT NO 04210008.00