



Cave Spring Community Planning Area (CPA)

Seven Roanoke County 200 Plan open house planning meetings were held around Roanoke County in Spring 2022 for citizens to review draft goals and recommendation options based on the feedback received throughout the Fall 2021 community engagement. Draft goals were developed based on input that we received at the community meetings and online surveys in Fall 2021. Citizens reviewed and provided comments on the new draft goals and recommendations that will shape the draft Roanoke County 200 Plan document. The draft goals and recommendations displayed included natural and cultural resources, land use, community facilities and infrastructure, and transportation.

Community Meeting

The community meeting for the Cave Spring CPA was held in conjunction with the Clearbrook CPA on April 21, 2022 at Cave Spring Elementary There were 8 attendees.

Summary

Natural and Cultural Resources: The majority (91%) of survey and community meeting participants support the eleven initiatives to protect and improve ground, surface and stormwater resources; beautify the county's public areas, viewsheds and roadways; clean up garbage; protect steep slope areas; protect trees and forests, natural areas and wildlife habitats; as well as protection of historic and cultural resources.

Land Use: 68% of respondents support the activity centers as shown on the Activity Center Map, while 22% indicated interest in additional activity centers in Cave Spring. 78% of respondents support the proposed changes to the Future Land Use Map.

Community Facilities and Infrastructure:

1. Parks, Recreation and Tourism: 81% of respondents support the countywide initiatives as well as the following items pertaining to the Cave Spring CPA:
 - a. Continue developing programs at the Brambleton Center.
 - b. Explore new park, greenway and blueway opportunities.
 - c. Promote Park Partners Program.
2. General Services: 85% of respondents support recycling options and assessments of County Fire Department Facilities and the Administration Center.
3. Public Libraries: 86% of respondents support the countywide library system initiatives.
4. Communications and Information Technology: 90% of respondents support expansion and improvement of broadband and cell phone access.
5. Public Safety: 91% of respondents support countywide public safety initiatives.



Transportation:

Cave Spring CPA Transportation Questions	
13 Survey Respondents (to this section)	
Percentage of respondents support	
1. Study & improve Route 419 for all users	89%
2. Implement 419 Town Center Plan	100%
3. Implement VDOT's US 220 Arterial Preservation Plan	78%
4. Route 221 multimodal safety study	82%
5. Extend Route 419 streetscape improvements from Starkey to Chaparral	82%
6. Inter-parcel connections for commercial areas along Route 419	94%
7. Connect planned crosswalks at Route 220 intersections	50%
8. Signalized pedestrian crossings at intersections along Route 419	78%
9. Ogden Road mulitmodal study	70%
10. Pedestrian accommodations on chaparral at Cave Spring High School	94%
11. Connect & expand sidewalks & trails between Penn Forest Elementary, South County library and County parks	94%
12. Pedestrian connections to businesses & destinations within Cave Spring CPA	72%
13. Improved bicycle infrastructure in the Cave Spring CPA	67%
14. Back Creek Greenway - Route 221 at Rosecrest Road & Route 221 - Cotton Hill Road	78%
15. Extend Murray Run Greenway from City of Roanoke into Tanglewood area	71%
16. Study Starkey Road between Route 419 & Terminal Road	88%
17. Expand Valley Metro routes to serve businesses and residents in Cave Spring	59%

Note: Numbers in charts refer to numbered projects on transportation map (page 4).



Cave Spring Transportation Ranking Questions	
18 Respondents	
Proposed Recommendation	Rank
1. Improve Route 419/Electric Road for all users.	1
2. Continue to implement the Route 419 Town Center Plan.	2
11. Sidewalks and trails between Penn Forest Elementary, South County library and County parks.	3
4. Route 221/Brambleton Avenue Multimodal Safety Study.	4
3. Implement VDOT's U.S. 220 Arterial Preservation Plan.	5
8. Pedestrian signals and crosswalks at intersections along Route 419/Electric Road.	6 (tie)
9. Ogden Road Multimodal Study	6 (tie)
10. Pedestrian accommodations on Chaparral Drive at Cave Spring High School - Woodthrush Drive and Purple Finch Road.	6 (tie)
16. Safety improvements for Starkey Road - Route 419 and Terminal Road.	9 (tie)
17. Expand Valley Metro to serve businesses and residents in Cave Spring.	9 (tie)
5. Extend Route 419 Streetscape Improvements from Starkey Road to Chaparral Drive.	11 (tie)
6. Inter-parcel connections for commercial areas along Route 419.	11 (tie)
12. Pedestrian connections within the Cave Spring CPA.	11 (tie)
14. Back Creek Greenway between Route 221 - Rosecrest Road and Route 221 at Cotton Hill Road.	11 (tie)
15. Murray Run Greenway - City of Roanoke into the Tanglewood area.	11 (tie)
7. Connect crosswalks between Valley Avenue/Southern Hills Drive and Clearbrook Village Lane/Indian Grave Road with pedestrian accommodations.	16 (tie)
13. Improve bicycle accommodations in the Cave Spring CPA.	16 (tie)

Note: Numbers in charts refer to numbered projects on transportation map (page 4).

Transportation: Cave Spring

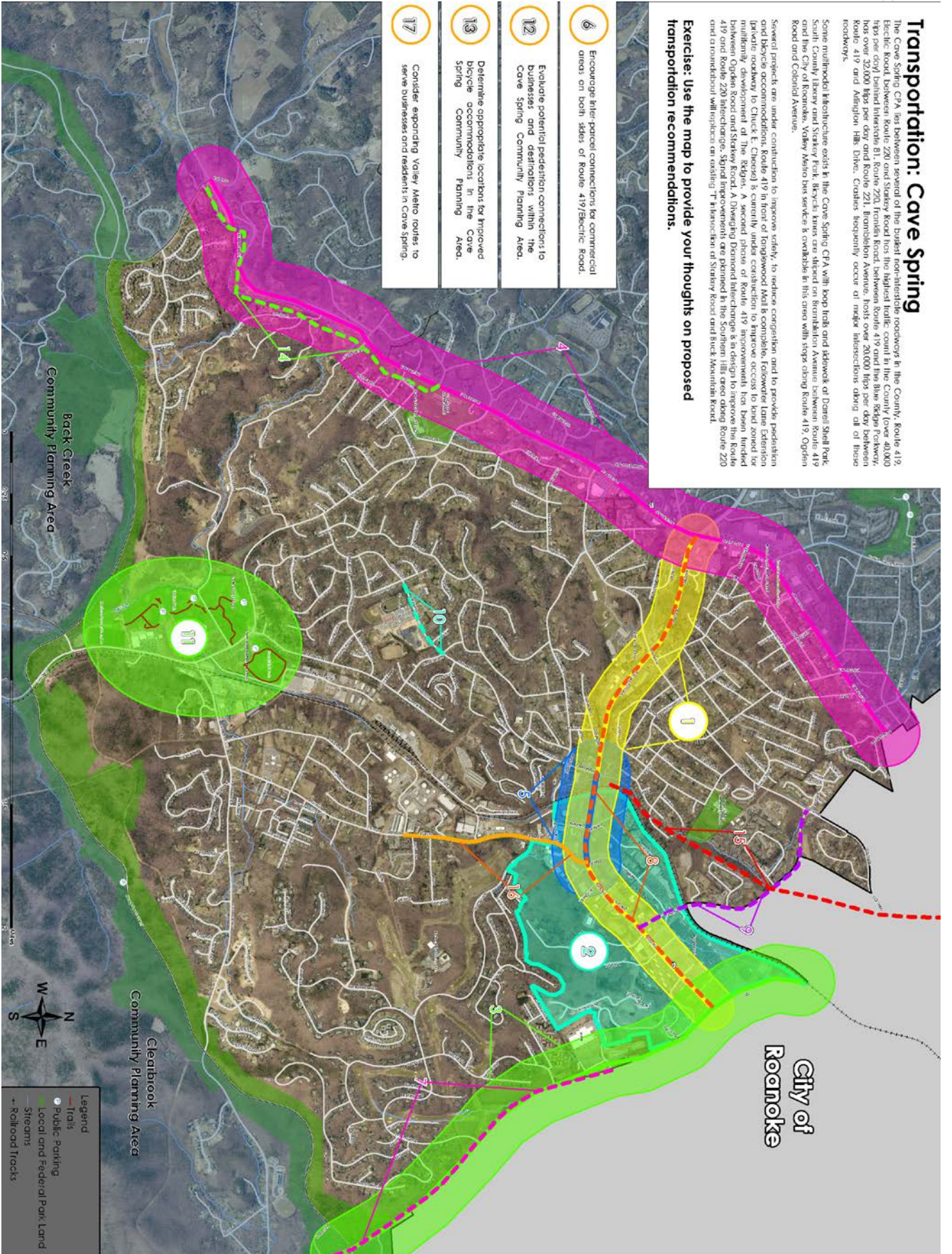
The Cave Spring CFA has between several of the busiest non-interstate roadways in the County, Route 419, State Road 226, and Statey Road has the highest traffic count in the County (over 40,000 vehicles per day) and is the most congested roadway in the County. The road has over 32,000 hits per day and Route 221, Berrinbush Avenue, has over 20,000 hits per day between Route 419 and Arlington Hills Drive. Crashes frequently occur at major intersections along all of these roadways.

Some multimodal infrastructure exists in the Cave Spring CFA with loop links and sidewalk at Daniel Shell Park, South County Library and Starkey Park. Bicycles times are shared on Berrinbush Avenue between Route 419 and the City of Roanoke, Valley Metro bus services is available in this area with stops along Route 419, Ogden Road and Colonial Avenue.

Several projects are under construction to improve safety, to reduce congestion, and to provide pedestrian and bicycle accommodations. Route 419 in front of Longwood Mall is complete, following Lane Extension (parking roadway) to Chuck E. Cheese is currently under construction to improve access to land zoned for multifamily development of The Ridge. A second phase of Route 419 improvements has been funded between Ogden Road and Starkey Road. A Designing Diamond Interchange is in design to improve the Route 419 and Route 220 Interchanges. Signal improvements are planned in the Southern Hills area along Route 220 and a roundabout will replace an existing "T" intersection of Starkey Road and Buck Mountain Road.

Exercise: Use the map to provide your thoughts on proposed transportation recommendations.

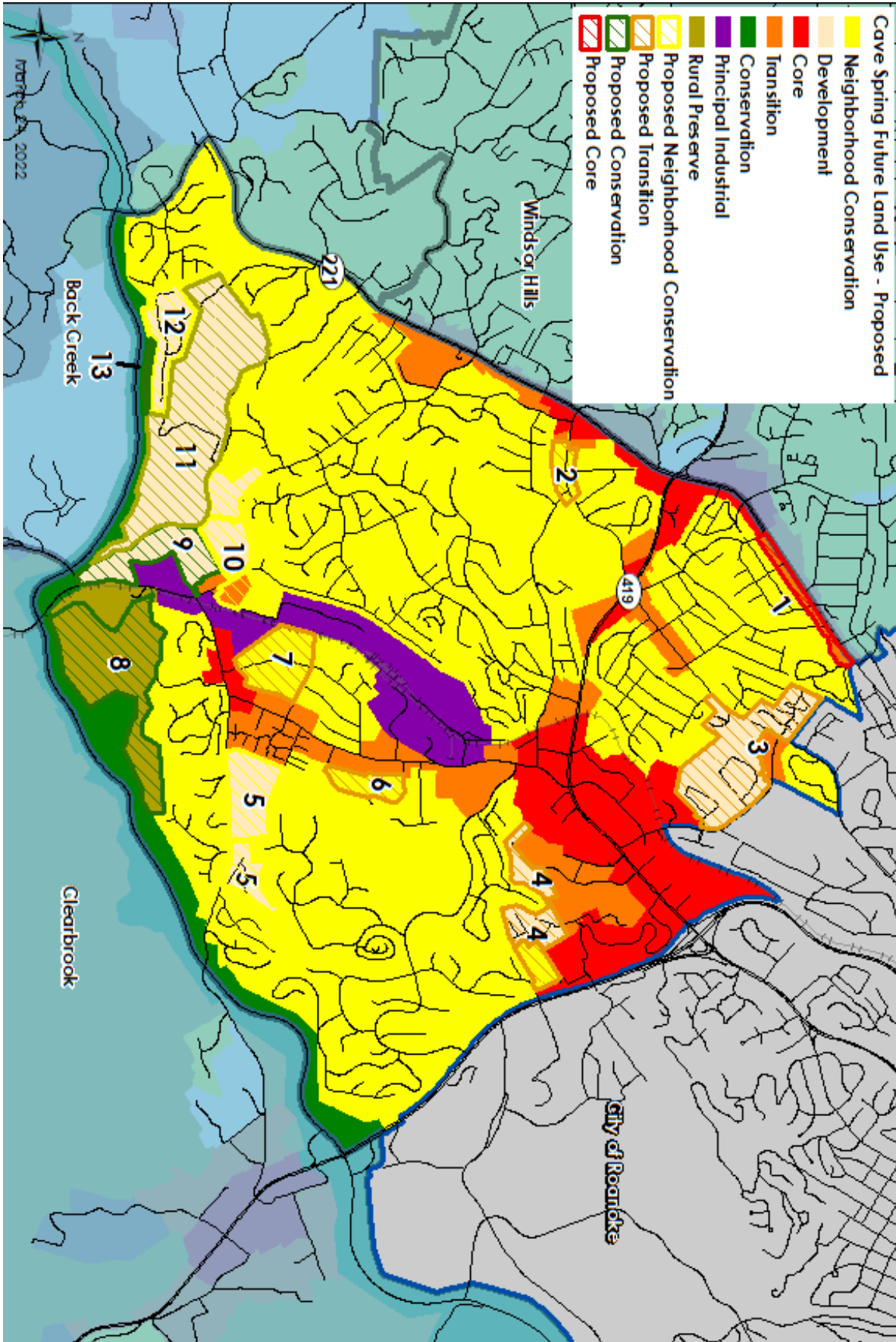
- 6 Encourage inter-modal connections for commercial areas on both sides of Route 419/Eschier Road.
- 12 Evaluate potential pedestrian connections to businesses and destinations within the Cave Spring Community Planning Area.
- 13 Determine appropriate locations for improved bicycle accommodations in the Cave Spring Community Planning Area.
- 17 Consider expanding Valley Metro routes to serve businesses and residents in Cave Spring.



Roanoke County 200 Plan: Spring 2022 Community Input Summary



Land Use, Natural & Cultural Resources, Community Facilities & Infrastructure Survey: Cave Spring		
	55 Respondents	
Natural and Cultural Resources	Yes	No
1. Protect and improve the quality of water in our streams, creeks and rivers.	51	2
2. Coordinate with State agencies regarding floodplain risks and prevention.	49	3
3. Reduce quantity and improve quality of stormwater.	47	5
4. Protect and prevent risks to surface waterways, reservoirs, underground aquifers and drinking water wells.	51	2
5. Beautify County roadways and public areas.	47	7
6. Protect viewsheds from the ridges and from the valleys.	49	4
7. Clean up and prevent litter and illegal dumping.	52	1
8. Protect steep slope areas.	51	2
9. Protect trees and forests and increase tree canopy.	50	3
10. Protect natural areas and wildlife habitats.	52	2
11. Coordinate with State agencies regarding historic and cultural resources, including cemeteries and archaeological sites.	50	4
Land Use - Activity Centers	Yes	No
1. Do you support the location of the activity centers shown on the map?	23	11
2. Are there other areas in Roanoke County that should be designated as an activity center?	7	25
Land Use - Changes to Future Land Use Map	Yes	No
1. From Transition to Core	21	7
2. From Neighborhood Conservation to Transition	18	10
3. From Development to Transition	23	5
4. From Development and Neighborhood Conservation to Transition	18	10
5. From Development to Neighborhood Conservation	23	5
6. From Neighborhood Conservation to Transition	16	12
7. From Neighborhood Conservation to Transition	17	11
8. From Rural Preserve to Conservation	24	4
9. From Development to Conservation	25	3
10. From Transition and Development to Neighborhood Conservation	24	4
11. From Development to Rural Village	23	5
12. From Development to Neighborhood Conservation	25	3
13. From Development to Conservation	26	3



Roanoke County 200 Plan: Spring 2022 Community Input Summary



Land Use, Natural & Cultural Resources, Community Facilities & Infrastructure Survey: Cave Spring		
Community Facilities & Infrastructure: Parks, Recreation & Tourism	Yes	No
1. Evaluate new park, greenway, and blueway opportunities.	22	3
2. Evaluate on- and off- road connectivity options between parks, neighborhoods, and community facilities.	23	2
3. Continue coordination on regional efforts to enhance and develop outdoor recreation opportunities in our communities.	24	1
4. Update the Parks, Recreation & Tourism Master Plan.	2	
5. Continue promotion of the Park Partners Program to encourage citizens and businesses, and organizations to adopt a park, greenway, or trail.	23	1
6. Educate citizens on park ordinance updates (i.e. park sign updates, dog-friendly parks/special events and leash laws, drones, etc.).	23	2
7. Continue developing programs that allow for safer post-COVID plans that balance community needs with available staffing resources.	23	1
8. Continue developing programs at the Brambleton Center that allow for safer post-COVID plans that balance community needs with available staffing resources. The Brambleton Center is considered a valuable resource that supports a variety of diverse needs in the community (i.e., voting transportation, recreation, recycling, VA Cooperative Extension Office, etc.).	20	5
9. Evaluate opportunities for parks, greenways/trails, and blueways (i.e. Back Creek Greenway, Mudlick Creek Greenway, Back Creek, Clearbrook Park, connections to Blue Ridge Parkway, connections between Darrell Shell Park, South Country Library, Starkey Parks, and Merriman Complex, etc.).	21	4
10. Continue promotion of the Park Partners Program to encourage citizens and businesses, and organizations to adopt a park, greenway, or trail.	22	2
Community Facilities & Infrastructure: General Services	Yes	No
1. Evaluate recycling program options.	23	1
2. Complete planned Roanoke County Fire Department Facilities Assessment.	23	3
3. Complete planned Roanoke County Administration Center Assessment.	21	3
Community Facilities & Infrastructure: Public Libraries	Yes	No
1. Improve services and continue enhancing facilities.	23	3
2. Evaluate programming needs and wants based on a variety of data and customer feedback.	22	4
3. Implement responsive, community focused program that serves people of all ages and backgrounds.	23	3
4. Ensure timely delivery of all circulating materials.	21	5
5. Raise level of engagement with the community, and increase awareness about library services and programs.	23	3
Community Facilities & Infrastructure: Communication & Information Technology	Yes	No
1. Explore opportunities to extend broadband service with universal availability and access to high-speed Internet in unserved and under-served areas.	24	2
2. Explore alternative broadband and cell phone providers for choice and competition.	23	3
3. Explore more public-private partnerships to implement more stages of Roanoke County's Rural Broadband Initiative to bring high-speed Internet to homes without broadband access.	24	3
4. Explore providing improved cell phone service in unserved and under-served areas.	24	2
5. Consider submitting applications for the Virginia Telecommunications Initiative (VATI) grant and other grants.	22	2
Community Facilities & Infrastructure: Public Safety	Yes	No
1. Provide the efficient delivery of public safety services with minimal response times.	26	1
2. Enhance and maintain public safety staffing.	26	1
3. Enhance and maintain facilities and equipment.	25	2
4. Provide a high-level of citizen engagement and educational opportunities.	21	4