



Clearbrook Community Planning Area (CPA)

Seven Roanoke County 200 Plan open house planning meetings were held around Roanoke County in Spring 2022 for citizens to review draft goals and recommendation options based on the feedback received throughout the Fall 2021 community engagement. Draft goals were developed based on input that we received at the community meetings and online surveys in Fall 2021. Citizens reviewed and provided comments on the new draft goals and recommendations that will shape the draft Roanoke County 200 Plan document. The draft goals and recommendations displayed included natural and cultural resources, land use, community facilities and infrastructure, and transportation.

Community Meeting

The community meeting for the Clearbrook CPA was held in conjunction with the Cave Spring CPA on April 21, 2022 at Cave Spring Elementary. There were 8 attendees.

Summary

Natural and Cultural Resources: The majority (83%) of survey and community meeting participants support the eleven initiatives to protect and improve ground, surface and stormwater resources; beautify the county's public areas, viewsheds and roadways; clean up garbage; protect steep slope areas; protect trees and forests, natural areas and wildlife habitats; as well as protection of historic and cultural resources.

Land Use: 86% of respondents support the activity centers as shown on the Activity Center Map, while 100% indicated no desire for additional activity centers. 63% of respondents support the proposed changes to the Future Land Use Map.

Community Facilities and Infrastructure:

1. Parks, Recreation and Tourism: 86% of respondents support the countywide initiatives as well as the following items pertaining to the Clearbrook CPA:
 - a. Continue developing programs at the Brambleton Center.
 - b. Explore new park, greenway and blueway opportunities.
 - c. Promote Park Partners Program.
2. General Services: 87% of respondents support recycling options and assessments of County Fire Department Facilities and the Administration Center.
3. Public Libraries: 88% of respondents support the countywide library system initiatives.
4. Communications and Information Technology: 92% of respondents support expansion and improvement of broadband and cell phone access.
5. Public Safety: 85% of respondents support countywide public safety initiatives.



Transportation:

Clearbrook CPA Transportation Questions	
2 Survey Respondents	
Percentage of respondents support	
1. Implement VDOT’s U.S. 220 Arterial Preservation Plan	100%
2. Connect crosswalks at Route 220 intersections with pedestrian accommodations	100%
3. Pedestrian connections to businesses and destinations within the Clearbrook CPA	100%
4. Bicycle accommodations in the Clearbrook CPA	100%
5. Expand Valley Metro service to Southern Hills and Clearbrook communities	100%

Clearbrook Transportation Ranking Questions	
2 Respondents	
Proposed Recommendation	Rank
1. Implement VDOT’s U.S. 220 Arterial Preservation Plan.	1 (tie)
2. Connect crosswalks - Route 220 intersections Valley Avenue/Southern Hills Drive & Clearbrook Village Lane/Indian Grave Road with sidewalks.	1 (tie)
3. Pedestrian connections within the Clearbrook CPA.	1 (tie)
4. Bicycle accommodations in the Clearbrook CPA.	1 (tie)
5. Expand Valley Metro to Southern Hills and Clearbrook CPA.	1 (tie)

Note: Numbers in charts refer to numbered projects on transportation map (next page).

Transportation: Clearbrook

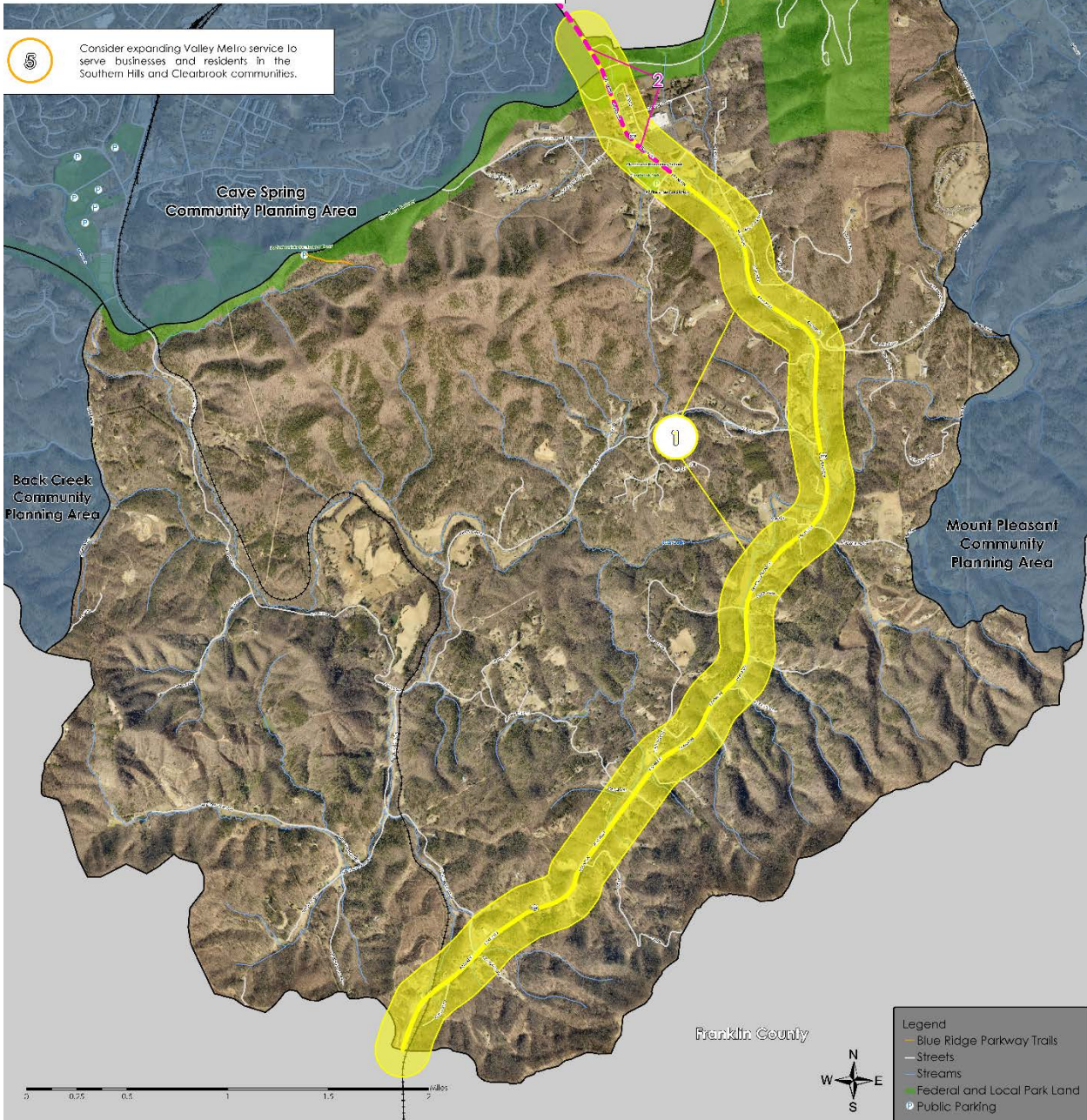
The Clearbrook CPA includes two transportation corridors of major significance to the Roanoke Valley; Route 220 and the Blue Ridge Parkway. Route 220 between the City of Roanoke and Franklin County has by far the most vehicle trips in the CPA with over 32,000. Vehicle crashes on Route 220 make up 80 percent of crashes in the CPA.

As a Corridor of Statewide Significance, in 2017 VDOT initiated an Arterial Preservation Program (APP) study of Route 220 between Route 419 and Henry County. This APP study led to further analysis of seven intersections with traffic signals. Four traffic signals in the City of Roanoke and Roanoke County are proposed for Through-Cut modifications, including two in the Clearbrook CPA at Buck Mountain Road/Stable Road and at Indian Grave Road/Clearbrook Village Lane. It is anticipated that the traffic signal modifications will improve traffic flow and will reduce crashes, while also providing pedestrian crosswalks and signals for safer pedestrian travel in the area. Other projects in the area include the recent completion of the Route 220 bridge over Back Creek and paving gravel segments of Crowell Gap Road and Webb Road.

Trails in the Clearbrook CPA are associated with the Blue Ridge Parkway.

Exercise: Use the map to provide your thoughts on proposed transportation recommendations.

- 3 Evaluate potential pedestrian connections to businesses and destinations within the Clearbrook Community Planning Area.
- 4 Determine appropriate locations for improved bicycle accommodations in the Clearbrook Community Planning Area.

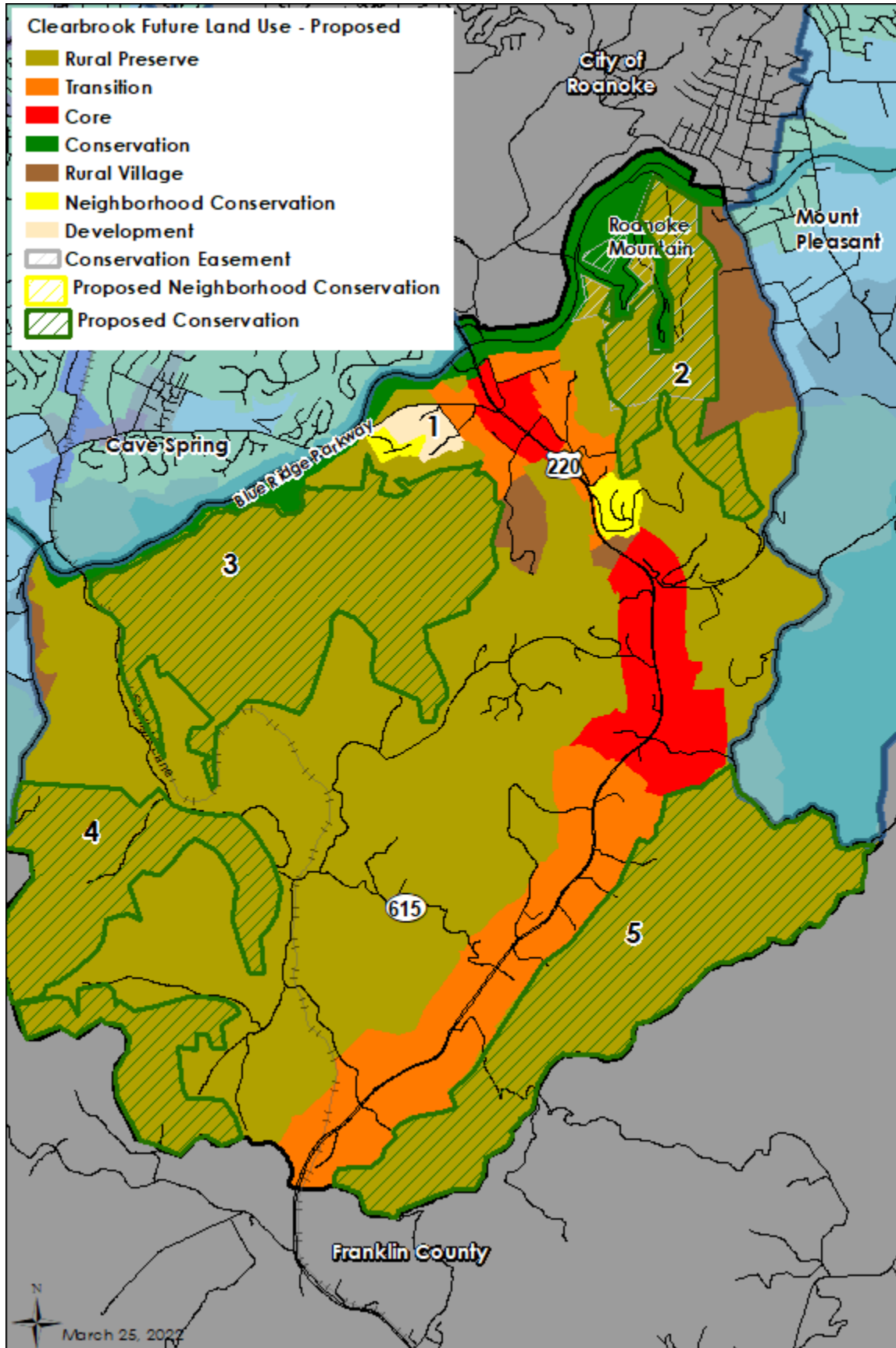


- 5 Consider expanding Valley Metro service to serve businesses and residents in the Southern Hills and Clearbrook communities.

Roanoke County 200 Plan: Spring 2022 Community Input Summary



Land Use, Natural & Cultural Resources, Community Facilities & Infrastructure Survey: Clearbrook		
	10 Respondents	
Natural and Cultural Resources	Yes	No
1. Protect and improve the quality of water in our streams, creeks and rivers.	9	0
2. Coordinate with State agencies regarding floodplain risks and prevention.	8	1
3. Reduce quantity and improve quality of stormwater.	9	0
4. Protect and prevent risks to surface waterways, reservoirs, underground aquifers and drinking water wells.	9	0
5. Beautify County roadways and public areas.	9	0
6. Protect viewsheds from the ridges and from the valleys.	9	0
7. Clean up and prevent litter and illegal dumping.	5	4
8. Protect steep slope areas.	9	0
9. Protect trees and forests and increase tree canopy.	7	2
10. Protect natural areas and wildlife habitats.	9	0
11. Coordinate with State agencies regarding historic and cultural resources, including cemeteries and archaeological sites.	8	0
Land Use - Activity Centers	Yes	No
1. Do you support the location of the activity centers shown on the map?	6	1
2. Are there other areas in Roanoke County that should be designated as an activity center?	0	7
Land Use - Changes to Future Land Use Map	Yes	No
1. From Development to Neighborhood Conservation	5	2
2. From Rural Preserve to Conservation	5	1
3. From Rural Preserve to Conservation	4	2
4. From Rural Preserve to Conservation	4	2
5. From Rural Preserve to Conservation	4	2



Roanoke County 200 Plan: Spring 2022 Community Input Summary



Land Use, Natural & Cultural Resources, Community Facilities & Infrastructure Survey: Clearbrook		
Community Facilities & Infrastructure: Parks, Recreation & Tourism	Yes	No
1. Evaluate new park, greenway, and blueway opportunities.	4	0
2. Evaluate on- and off- road connectivity options between parks, neighborhoods, and community facilities.	4	1
3. Continue coordination on regional efforts to enhance and develop outdoor recreation opportunities in our communities.	5	0
4. Update the Parks, Recreation & Tourism Master Plan.	5	0
5. Continue promotion of the Park Partners Program to encourage citizens and businesses, and organizations to adopt a park, greenway, or trail.	4	1
6. Educate citizens on park ordinance updates (i.e. park sign updates, dog-friendly parks/special events and leash laws, drones, etc.).	5	0
7. Continue developing programs that allow for safer post-COVID plans that balance community needs with available staffing resources.	4	1
8. Continue developing programs at the Brambleton Center that allow for safer post-COVID plans that balance community needs with available staffing resources. The Brambleton Center is considered a valuable resource that supports a variety of diverse needs in the community (i.e., voting transportation, recreation, recycling, VA Cooperative Extension Office, etc.).	3	2
9. Evaluate opportunities for parks, greenways/trails, and blueways (i.e. Back Creek Greenway, Mudlick Creek Greenway, Back Creek, Clearbrook Park, connections to Blue Ridge Parkway, connections between Darrell Shell Park, South Country Library, Starkey Parks, and Merriman Complex, etc.).	5	0
10. Continue promotion of the Park Partners Program to encourage citizens and businesses, and organizations to adopt a park, greenway, or trail.	4	1
Community Facilities & Infrastructure: General Services	Yes	No
1. Evaluate recycling program options.	5	0
2. Complete planned Roanoke County Fire Department Facilities Assessment.	5	0
3. Complete planned Roanoke County Administration Center Assessment.	3	2
Community Facilities & Infrastructure: Public Libraries	Yes	No
1. Improve services and continue enhancing facilities.	5	0
2. Evaluate programming needs and wants based on a variety of data and customer feedback.	4	1
3. Implement responsive, community focused program that serves people of all ages and backgrounds.	4	1
4. Ensure timely delivery of all circulating materials.	5	0
5. Raise level of engagement with the community, and increase awareness about library services and programs.	4	1
Community Facilities & Infrastructure: Communication & Information Technology	Yes	No
1. Explore opportunities to extend broadband service with universal availability and access to high-speed Internet in unserved and under-served areas.	4	1
2. Explore alternative broadband and cell phone providers for choice and competition.	5	0
3. Explore more public-private partnerships to implement more stages of Roanoke County's Rural Broadband Initiative to bring high-speed Internet to homes without broadband access.	4	1
4. Explore providing improved cell phone service in unserved and under-served areas.	5	0
5. Consider submitting applications for the Virginia Telecommunications Initiative (VATI) grant and other grants.	5	0
Community Facilities & Infrastructure: Public Safety	Yes	No
1. Provide the efficient delivery of public safety services with minimal response times.	5	0
2. Enhance and maintain public safety staffing.	5	0
3. Enhance and maintain facilities and equipment.	4	1
4. Provide a high-level of citizen engagement and educational opportunities.	3	2