



Glenvar Community Planning Area (CPA)

Seven Roanoke County 200 Plan open house planning meetings were held around Roanoke County in Spring 2022 for citizens to review draft goals and recommendation options based on the feedback received throughout the Fall 2021 community engagement. Draft goals were developed based on input that we received at the community meetings and online surveys in Fall 2021. Citizens reviewed and provided comments on the new draft goals and recommendations that will shape the draft Roanoke County 200 Plan document. The draft goals and recommendations displayed included natural and cultural resources, land use, community facilities and infrastructure, and transportation.

Community Meeting

The community meeting for the Glenvar CPA on April 7, 2022 at Fort Lewis Elementary. There were 13 attendees.

Summary

Natural and Cultural Resources: The majority (89%) of survey and community meeting participants support the eleven initiatives to protect and improve ground, surface and stormwater resources; beautify the county's public areas, viewsheds and roadways; clean up garbage; protect steep slope areas; protect trees and forests, natural areas and wildlife habitats; as well as protection of historic and cultural resources.

Land Use: 73% of respondents support the activity centers as shown on the Activity Center Map, while 30% indicated interest in additional activity centers near the Kroger warehouse, and in vacant building areas along West Main street. 88% of respondents support the proposed changes to the Future Land Use Map.

Community Facilities and Infrastructure:

1. Parks, Recreation and Tourism: 90% of respondents support the countywide initiatives as well as the following items pertaining to the Glenvar CPA:
 - a. Continue developing programs at the Catawba Center and Camp Roanoke.
 - b. Explore new park, greenway and blueway opportunities.
 - c. Evaluate recreation alternatives at Spring Hollow Reservoir.
2. General Services: 90% of respondents support recycling options and assessments of County Fire Department Facilities and the Administration Center.
3. Public Libraries: 85% of respondents support the countywide library system initiatives.
4. Communications and Information Technology: 100% of respondents support expansion and improvement of broadband and cell phone access.
5. Public Safety: 98% of respondents support countywide public safety initiatives.

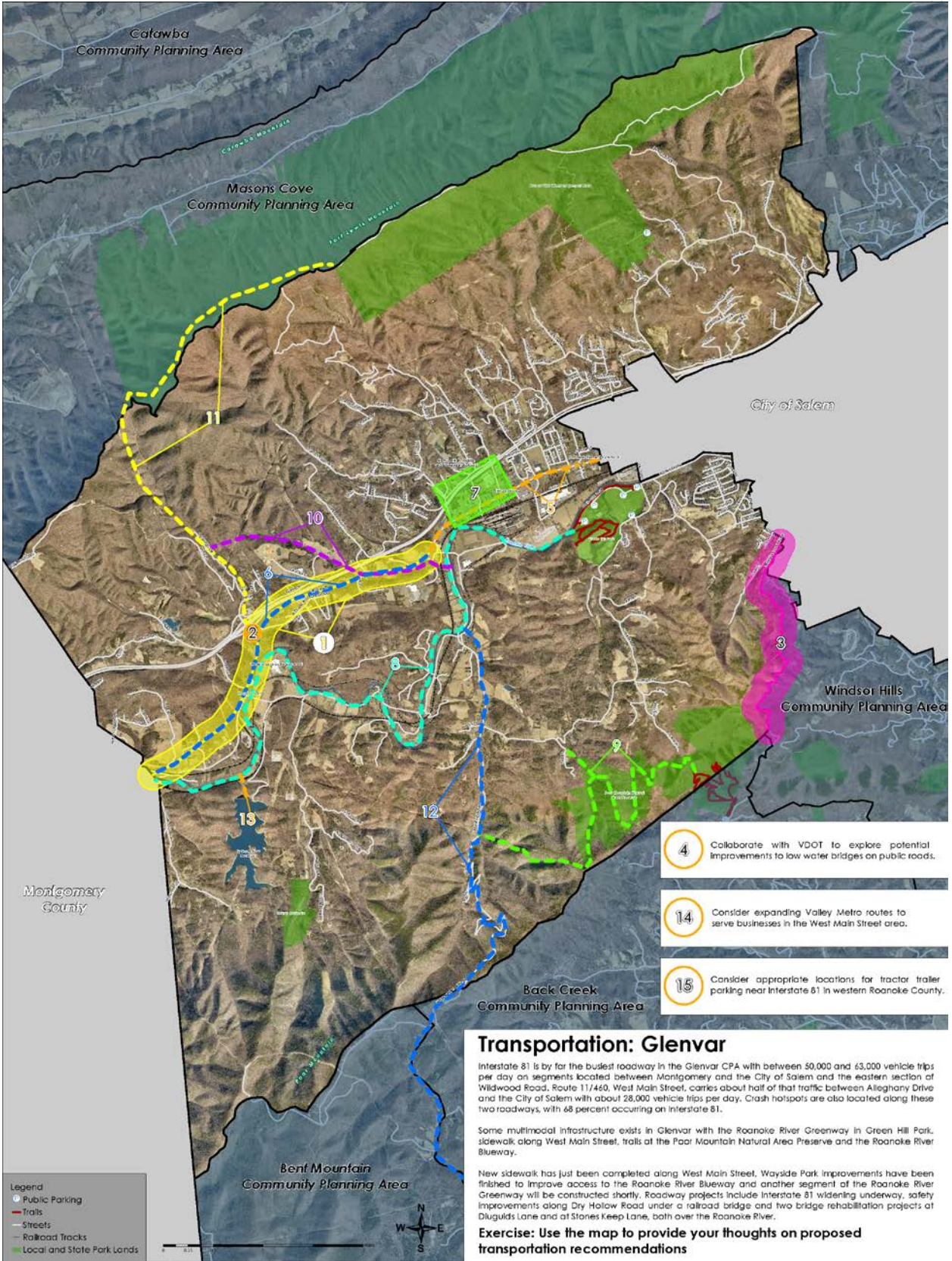


Transportation:

Glenvar CPA Transportation Questions	
6 Survey Respondents	
Percentage of respondents support	
1. Road safety improvements for Route 11/460 between Technology Drive and Montgomery County	100%
2. Improve safety at the I-81/Dow Hollow Road/West Main Street Intersection	100%
3. Safety improvements for Twelve O' Clock Knob Road	80%
4. Improvements to low water bridges on public roads	83%
5. Complete sidewalk on both sides of West Main Street between the City of Salem and Technology Drive	17%
6. Pedestrian/bicycle infrastructure on Route 11/460/West Main Street to Montgomery County	50%
7. Pedestrian accommodations to connect the Glenvar Schools to businesses along West Main Street	50%
8. Roanoke River Greenway between Green Hill Park and Montgomery County	67%
9. Expand trail network at Poor Mountain Natural Area Preserve to connect to Poor Mountain Road and Harborwood Road	80%
10. Greenway along Callahan Branch to connect Valley Tech Park to the Center for Research and Technology	50%
11. Perimeter Trail north connecting Havens Wildlife Management Area trails to Roanoke River Greenway	83%
12. Perimeter Trail south connecting Roanoke River Greenway near Dixie Caverns along Poor Mountain Road to the BRP	67%
13. Connect Spring Hollow Reservoir to the Roanoke River Greenway	80%
14. Expand Valley Metro to businesses in the West Main Street area	75%
15. Tractor trailer parking near Interstate 81 in western Roanoke County	75%



Glenvar Transportation Ranking Questions	
6 Respondents	
Proposed Recommendation	Rank
2. Improve safety at I-81/Dow Hollow Road/West Main Street Intersection.	1
1. Safety improvements for Route 11/460 - Technology Drive to Montgomery County.	2 (tie)
8. Roanoke River Greenway - Green Hill Park to Montgomery County.	2 (tie)
15. Tractor trailer parking near Interstate 81 in western Roanoke County.	2 (tie)
3. Safety improvements for Twelve O' Clock Knob Road.	5 (tie)
4. Improvements to low water bridges on public roads.	5 (tie)
11. Perimeter Trail - connect the Havens Wildlife Management Area trails to Roanoke River Greenway near Dixie Caverns.	7
5. Sidewalk on both sides of West Main Street - City of Salem to Technology Drive.	8 (tie)
9. Connect Poor Mountain Natural Area Preserve trails to Poor Mountain Road and Harborwood Road.	8 (tie)
12. Perimeter Trail to Roanoke River Greenway near Dixie Caverns along Poor Mountain Road to the Blue Ridge Parkway on Bent Mountain.	8 (tie)
13. Connect to future recreation opportunities at Spring Hollow Reservoir from the Roanoke River Greenway.	8 (tie)
14. Expand Valley Metro routes to the West Main Street area.	8 (tie)
6. Pedestrian/bicycle infrastructure on Route 11/460 - Technology Drive to Montgomery County.	13 (tie)
7. Pedestrian accommodations to connect the Glenvar Schools to businesses along West Main Street.	13 (tie)
10. Callahan Branch Greenway - Valley Tech Park to Center for Research and Technology.	13 (tie)



- 4 Collaborate with VDOT to explore potential improvements to low water bridges on public roads.
- 14 Consider expanding Valley Metro routes to serve businesses in the West Main Street area.
- 15 Consider appropriate locations for tractor trailer parking near Interstate 81 in western Roanoke County.

Transportation: Glenvar

Interstate 81 is by far the busiest roadway in the Glenvar CPA with between 50,000 and 63,000 vehicle trips per day on segments located between Montgomery and the City of Salem and the eastern section of Wildwood Road, Route 11/460. West Main Street, carries about half of that traffic between Alleghany Drive and the City of Salem with about 28,000 vehicle trips per day. Crash hotspots are also located along these two roadways, with 68 percent occurring on Interstate 81.

Some multimodal infrastructure exists in Glenvar with the Roanoke River Greenway in Green Hill Park, sidewalk along West Main Street, trails at the Paar Mountain Natural Area Preserve and the Roanoke River Blueway.

New sidewalk has just been completed along West Main Street. Wayside Park improvements have been finished to improve access to the Roanoke River Blueway and another segment of the Roanoke River Greenway will be constructed shortly. Roadway projects include Interstate 81 widening underway, safety improvements along Dry Hollow Road under a railroad bridge and two bridge rehabilitation projects at Dlugid's Lane and at Stones Keep Lane, both over the Roanoke River.

Exercise: Use the map to provide your thoughts on proposed transportation recommendations

Roanoke County 200 Plan: Spring 2022 Community Input Summary



Land Use, Natural & Cultural Resources, Community Facilities & Infrastructure Survey: Glenvar		
	38 Respondents	
Natural and Cultural Resources		
1. Protect and improve the quality of water in our streams, creeks and rivers.	Yes	No
2. Coordinate with State agencies regarding floodplain risks and prevention.	37	1
3. Reduce quantity and improve quality of stormwater.	30	8
4. Protect and prevent risks to surface waterways, reservoirs, underground aquifers and drinking water wells.	32	6
5. Beautify County roadways and public areas.	33	2
6. Protect viewsheds from the ridges and from the valleys.	35	2
7. Clean up and prevent litter and illegal dumping.	31	6
8. Protect steep slope areas.	38	0
9. Protect trees and forests and increase tree canopy.	32	4
10. Protect natural areas and wildlife habitats.	37	0
11. Coordinate with State agencies regarding historic and cultural resources, including cemeteries and archaeological sites.	35	0
32	5	
Land Use - Activity Centers		
1. Do you support the location of the activity centers shown on the map?	Yes	No
	16	6
2. Are there other areas in Roanoke County that should be designated as an activity center?	6	14
Land Use - Changes to Future Land Use Map		
1. From Rural Preserve to Conservation	Yes	No
2. From Rural Preserve to Conservation	18	2
3. From Rural Preserve to Conservation	18	2
4. From Rural Preserve to Conservation	18	2
5. From Rural Preserve to Conservation	17	3
6. From Rural Village to Rural Preserve	16	4
7. From Rural Village to Rural Preserve	15	4
Community Facilities & Infrastructure: Parks, Recreation & Tourism		
1. Evaluate new park, greenway, and blueway opportunities.	Yes	No
2. Evaluate on- and off- road connectivity options between parks, neighborhoods, and community facilities.	15	2
3. Continue coordination on regional efforts to enhance and develop outdoor recreation opportunities in our communities.	16	1
4. Update the Parks, Recreation & Tourism Master Plan.	16	1
5. Continue promotion of the Park Partners Program to encourage citizens and businesses, and organizations to adopt a park, greenway, or trail.	16	1
6. Educate citizens on park ordinance updates (i.e. park sign updates, dog-friendly parks/special events and leash laws, drones, etc.).	15	2
7. Continue developing programs that allow for safer post-COVID plans that balance community needs with available staffing resources.	13	4
8. Evaluate opportunities for parks (i.e. Green Hill Park, Wayside Park, and Camp Roanoke), greenways/trails (i.e. Roanoke River Greenway and Valley to Valley Trail), and blueways.	16	0
9. Coordinate with the Western Virginia Water Authority to evaluate recreation programming and public access alternatives at Spring Hollow Reservoir.	15	2
Community Facilities & Infrastructure: General Services		
1. Evaluate recycling program options.	Yes	No
2. Complete planned Roanoke County Fire Department Facilities Assessment.	17	0
3. Complete planned Roanoke County Administration Center Assessment.	12	5
Community Facilities & Infrastructure: Public Libraries		
1. Improve services and continue enhancing facilities.	Yes	No
2. Evaluate programming needs and wants based on a variety of data and customer feedback.	15	2
3. Implement responsive, community focused program that serves people of all ages and backgrounds.	15	2
4. Ensure timely delivery of all circulating materials.	13	4
5. Raise level of engagement with the community, and increase awareness about library services and programs.	15	2
14	3	
Community Facilities & Infrastructure: Communication & Information Technology		
1. Explore opportunities to extend broadband service with universal availability and access to high-speed Internet in unserved and under-served areas.	Yes	No
2. Explore alternative broadband and cell phone providers for choice and competition.	17	0
3. Explore more public-private partnerships to implement more stages of Roanoke County's Rural Broadband Initiative to bring high-speed Internet to homes without broadband access.	17	0
4. Explore providing improved cell phone service in unserved and under-served areas.	17	0
5. Consider submitting applications for the Virginia Telecommunications Initiative (VATI) grant and other grants.	17	0
Community Facilities & Infrastructure: Public Safety		
1. Provide the efficient delivery of public safety services with minimal response times.	Yes	No
2. Enhance and maintain public safety staffing.	17	0
3. Enhance and maintain facilities and equipment.	17	0
4. Provide a high-level of citizen engagement and educational opportunities.	17	0
16	1	

