



## Back Creek Community Planning Area (CPA)

Seven Roanoke County 200 Plan open house planning meetings were held around Roanoke County in Spring 2022 for citizens to review draft goals and recommendation options based on the feedback received throughout the Fall 2021 community engagement. Draft goals were developed based on input that we received at the community meetings and online surveys in Fall 2021. Citizens reviewed and provided comments on the new draft goals and recommendations that will shape the draft Roanoke County 200 Plan document. The draft goals and recommendations displayed included natural and cultural resources, land use, community facilities and infrastructure, and transportation.

### Community Meeting

The community meeting for the Back Creek CPA was held in conjunction with the Bent Mountain CPA at the Bent Mountain Center on April 18, 2022. There were 29 attendees.

### Summary

Natural and Cultural Resources: The vast majority (95%) of survey and community meeting participants support the eleven initiatives to protect and improve ground, surface and stormwater resources; beautify the county's public areas, viewsheds and roadways; clean up garbage; protect steep slope areas; protect trees and forests, natural areas and wildlife habitats; as well as protection of historic and cultural resources.

Land Use: 92% of respondents support the activity centers as shown on the Activity Center Map. 81% of respondents support the proposed changes to the Future Land Use Map.

### Community Facilities and Infrastructure:

1. Parks, Recreation and Tourism: 83% of respondents support the countywide initiatives as well as the following items pertaining to the Back Creek CPA:
  - a. Trail connections shown in the 2018 Roanoke Valley Greenway Plan.
  - b. Evaluate park, trail and blueway options along Back Creek.
  - c. Collaborative efforts for programming and marketing the Bent Mountain Community Center.
  - d. Evaluate park and trail needs.
  - e. Analyze potential on- and off-road alternatives for transportation and outdoor recreation.
  - f. County supported volunteer workdays (i.e. Clean Valley Day).
2. General Services: 80% of respondents support recycling options and assessments of County Fire Department Facilities and the Administration Center.
3. Public Libraries: 89% of respondents support the countywide library system initiatives.
  - a. Communications and Information Technology: 91% of respondents support



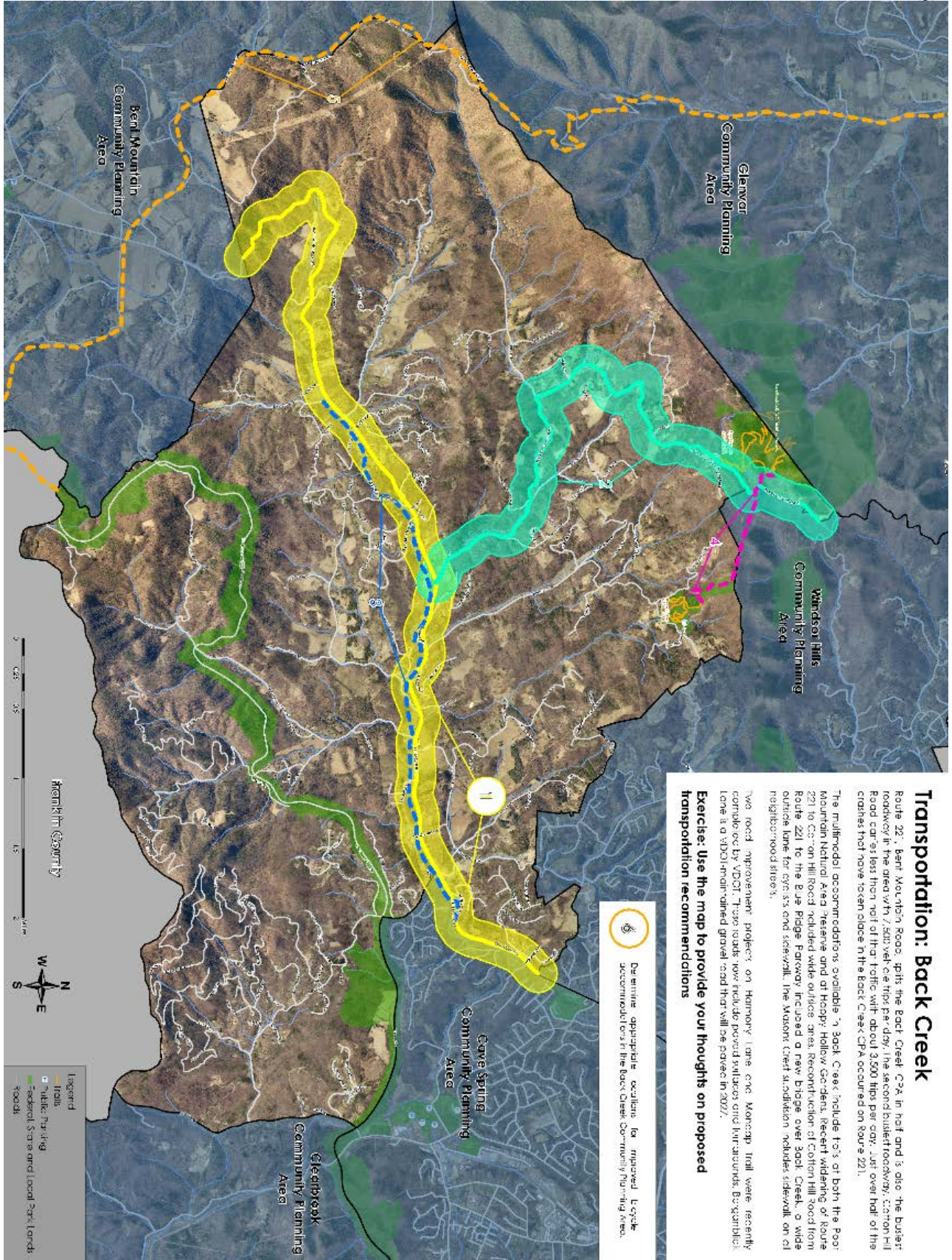
- expansion and improvement of broadband and cell phone access.
- b. Public Safety: 97% of respondents support countywide public safety initiatives.

Transportation:

Back Creek CPA Transportation Questions	
14 Respondents	
Percentage of respondents support	
1. Route 221 multimodal safety study	100%
2. Safety improvements 12 O'Clock Knob	100%
3. Back Creek Greenway - Sunnycrest Road to AppleGrove Lane	100%
4. Connect Happy Hollow Gardens & Poor Mtn. Preserve with Long Ridge Trail	100%
5. Perimeter Trail: connect Roanoke River Greenway to Blue Ridge Parkway on Bent Mountain	100%
6. Bicycle infrastructure in Back Creek CPA	90%

Back Creek Transportation Ranking Questions	
14 Respondents	
Proposed Recommendation	Rank
2. Safety improvements for Twelve O' Clock Knob Road	1
1. Route 221/Bent Mountain Road Multimodal Safety Study	2 (tie)
3. Back Creek Greenway between Sunnycrest Road and Apple Grove Lane	2 (tie)
4. Connect Happy Hollow Gardens & Poor Mountain Preserve trails with Long Ridge Trail	4
6. Bicycle infrastructure in Back Creek CPA	5
5. Perimeter Trail	6

**Note:** Numbers in charts refer to numbered projects on transportation map (next page).



**Transportation: Back Creek**

Route 221, Bert Mountain Road, splits the Back Creek CPA in half and is also the busiest roadway in the area with 7,500 vehicle trips per day. The second busiest roadway, Cotton Hill Road, carries less than half of that traffic with about 3,500 trips per day. Just over half of the crashes that have taken place in the Back Creek CPA occurred on Route 221.

The multimodal accommodations available in Back Creek include 10.5% of both the Poor Mountain National Area Preserve and at Hoppy Hollow Gardens. Recent widening of Route 221 to 65' on Hill Road included wide outside areas. Reconstruction of Cotton Hill Road from Route 221 to the Blue Ridge Parkway included a new bridge over Back Creek, a wide outside lane for cyclists and equestrians, the Mason Creek station, includes sidewalk on all neighborhood streets.

Two road improvement projects on Harmony Lane are: Monopack Trail, recently completed by VDOT. These roads now include paved shoulders and turn-around. Beardsley Lane is a shoulder-paved gravel road that will be paved in 2027.

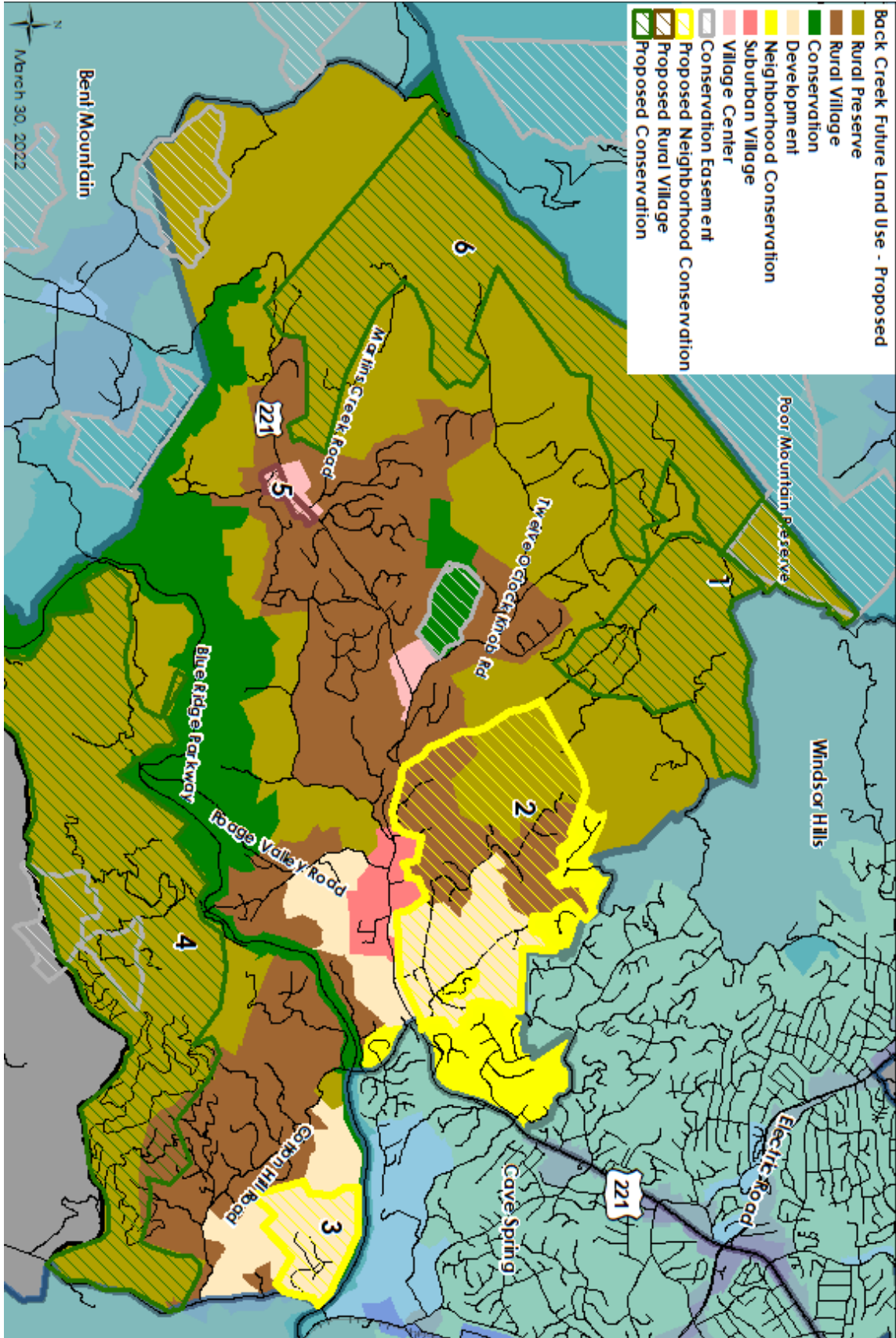
**Exercise: Use the map to provide your thoughts on proposed transportation recommendations**

Determine appropriate locations for improved bicycle accommodations in the Back Creek Community Planning Area.

# Roanoke County 200 Plan: Spring 2022 Community Input Summary



Land Use, Natural & Cultural Resources, Community Facilities & Infrastructure Survey: Back Creek		
	66 Respondents	
Natural and Cultural Resources	Yes	No
1. Protect and improve the quality of water in our streams, creeks and rivers.	65	1
2. Coordinate with State agencies regarding floodplain risks and prevention.	61	5
3. Reduce quantity and improve quality of stormwater.	61	5
4. Protect and prevent risks to surface waterways, reservoirs, underground aquifers and drinking water wells.	64	2
5. Beautify County roadways and public areas.	62	4
6. Protect viewsheds from the ridges and from the valleys.	63	3
7. Clean up and prevent litter and illegal dumping.	66	0
8. Protect steep slope areas.	63	3
9. Protect trees and forests and increase tree canopy.	61	5
10. Protect natural areas and wildlife habitats.	66	0
11. Coordinate with State agencies regarding historic and cultural resources, including cemeteries and archaeological sites.	58	8
Land Use - Activity Centers	Yes	No
1. Do you support the location of the activity centers shown on the map?	35	3
2. Are there other areas in Roanoke County that should be designated as an activity center?	1	37
Land Use - Changes to Future Land Use Map	Yes	No
1. From Rural Preserve to Conservation	33	8
2. From Rural Preserve, Development and Rural Village to Neighborhood Conservation	31	10
3. From Development to Neighborhood Conservation	37	5
4. From Rural Preserve to Conservation	33	9
5. From Village Center to Rural Village	34	6
6. From Rural Preserve to Conservation	32	8



# Roanoke County 200 Plan: Spring 2022 Community Input Summary



Land Use, Natural & Cultural Resources, Community Facilities & Infrastructure Survey: Back Creek		
	66 Respondents	
<b>Community Facilities &amp; Infrastructure: Parks, Recreation &amp; Tourism</b>		
	Yes	No
1. Evaluate new park, greenway, and blueway opportunities.	35	4
2. Evaluate on- and off- road connectivity options between parks, neighborhoods, and community facilities.	34	7
3. Continue coordination on regional efforts to enhance and develop outdoor recreation opportunities in our communities.	35	7
4. Update the Parks, Recreation & Tourism Master Plan.	34	5
5. Continue promotion of the Park Partners Program to encourage citizens and businesses, and organizations to adopt a park, greenway, or trail.	35	2
6. Educate citizens on park ordinance updates (i.e. park sign updates, dog-friendly parks/special events and leash laws, drones, etc.).	34	3
7. Continue developing programs that allow for safer post-COVID plans that balance community needs with available staffing resources.	35	10
8. Trail connections between Happy Hollow Gardens and Poor Mountain Nature Preserve in the 2018 Roanoke Valley Greenway Plan.	34	7
9. Evaluate park, greenway/trail, and blueway options along Back Creek.	34	5
10. Roanoke County Parks, Recreation & Tourism and Roanoke County Public Libraries partner with Bent Mountain Community Center about programs and marketing.	35	4
11. Evaluate park and trail needs (i.e. boardwalk trail maintenance, tennis court conversion to pickleball, etc.).	35	4
12. Analyze potential on- and off-road alternatives for transportation and outdoor recreation.	35	6
13. Host volunteer workdays (i.e. Clean Valley Day on April 9).	30	4
<b>Community Facilities &amp; Infrastructure: General Services</b>		
	Yes	No
1. Evaluate recycling program options.	35	5
2. Complete planned Roanoke County Fire Department Facilities Assessment.	35	3
3. Complete planned Roanoke County Administration Center Assessment.	34	9
<b>Community Facilities &amp; Infrastructure: Public Libraries</b>		
	Yes	No
1. Improve services and continue enhancing facilities.	35	2
2. Evaluate programming needs and wants based on a variety of data and customer feedback.	35	1
3. Implement responsive, community focused program that serves people of all ages and backgrounds.	34	2
4. Ensure timely delivery of all circulating materials.	35	0
5. Raise level of engagement with the community, and increase awareness about library services and programs.	35	4
<b>Community Facilities &amp; Infrastructure: Communication &amp; Information Technology</b>		
	Yes	No
1. Explore opportunities to extend broadband service with universal availability and access to high-speed Internet in unserved and under-served areas.	35	1
2. Explore alternative broadband and cell phone providers for choice and competition.	35	1
3. Explore more public-private partnerships to implement more stages of Roanoke County's Rural Broadband Initiative to bring high-speed Internet to homes without broadband access.	35	3
4. Explore providing improved cell phone service in unserved and under-served areas.	34	2
5. Consider submitting applications for the Virginia Telecommunications Initiative (VATI) grant and other grants.	34	3
<b>Community Facilities &amp; Infrastructure: Public Safety</b>		
	Yes	No
1. Provide the efficient delivery of public safety services with minimal response times.	35	0
2. Enhance and maintain public safety staffing.	35	1
3. Enhance and maintain facilities and equipment.	34	1
4. Provide a high-level of citizen engagement and educational opportunities.	35	1