



## Bent Mountain Community Planning Area (CPA)

Seven Roanoke County 200 Plan open house planning meetings were held around Roanoke County in Spring 2022 for citizens to review draft goals and recommendation options based on the feedback received throughout the Fall 2021 community engagement. Draft goals were developed based on input that we received at the community meetings and online surveys in Fall 2021. Citizens reviewed and provided comments on the new draft goals and recommendations that will shape the draft Roanoke County 200 Plan document. The draft goals and recommendations displayed included natural and cultural resources, land use, community facilities and infrastructure, and transportation.

### Community Meeting

The community meeting for the Bent Mountain CPA was held in conjunction with the Back Creek CPA on April 18, 2022 at the Bent Mountain Center. There were 29 attendees.

### Summary

Natural and Cultural Resources: The majority (84%) of survey and community meeting participants support the eleven initiatives to protect and improve ground, surface and stormwater resources; beautify the county's public areas, viewsheds and roadways; clean up garbage; protect steep slope areas; protect trees and forests, natural areas and wildlife habitats; as well as protection of historic and cultural resources.

Land Use: 100% of respondents support the activity centers as shown on the Activity Center Map. 85% of respondents support the proposed changes to the Future Land Use Map.

### Community Facilities and Infrastructure:

1. Parks, Recreation and Tourism: 87% of respondents support the countywide initiatives as well as the following items pertaining to the Bent Mountain CPA:
  - a. Trail connections shown in the 2018 Roanoke Valley Greenway Plan.
  - b. Evaluate park, trail and blueway options along Back Creek.
  - c. Collaborative efforts for programming and marketing the Bent Mountain Community Center.
  - d. Evaluate park and trail needs.
  - e. Analyze potential on- and off-road alternatives for transportation and outdoor recreation.
  - f. County supported volunteer workdays (i.e. Clean Valley Day).
2. General Services: 94% of respondents support recycling options and assessments of County Fire Department Facilities and the Administration Center.
3. Public Libraries: 94% of respondents support the countywide library system initiatives.
4. Communications and Information Technology: 96% of respondents support expansion and improvement of broadband and cell phone access.



5. Public Safety: 100% of respondents support countywide public safety initiatives.

Transportation:

Bent Mountain CPA Transportation Questions	
12 Respondents (to this section)	
Percentage of respondents support	
1. Route 221 Multimodal Study	100%
2. Slow traffic on local roads	85%
3. Evaluate ped connections	100%
4. Bike infrastructure in CPA & to BRP	83%
5. Expand trails at Bent Mtn. Center	91%
6. Perimeter Trail	88%

Bent Mountain Transportation Ranking Questions	
14 Respondents (to this section)	
Proposed Recommendation	Rank
1. Comprehensive safety improvements study for Route 221	1
4. Improved bicycle infrastructure in Bent Mountain CPA. Connect to Blue Ridge Parkway.	2
3. Pedestrian connections in Bent Mountain CPA	3 (tie)
5. Expand trail network at Bent Mountain Center	3 (tie)
2. Slow traffic on local roads off of route 221	5 (tie)
6. Perimeter Trail	5 (tie)

**Note:** Numbers in charts refer to numbered projects on transportation map (next page).

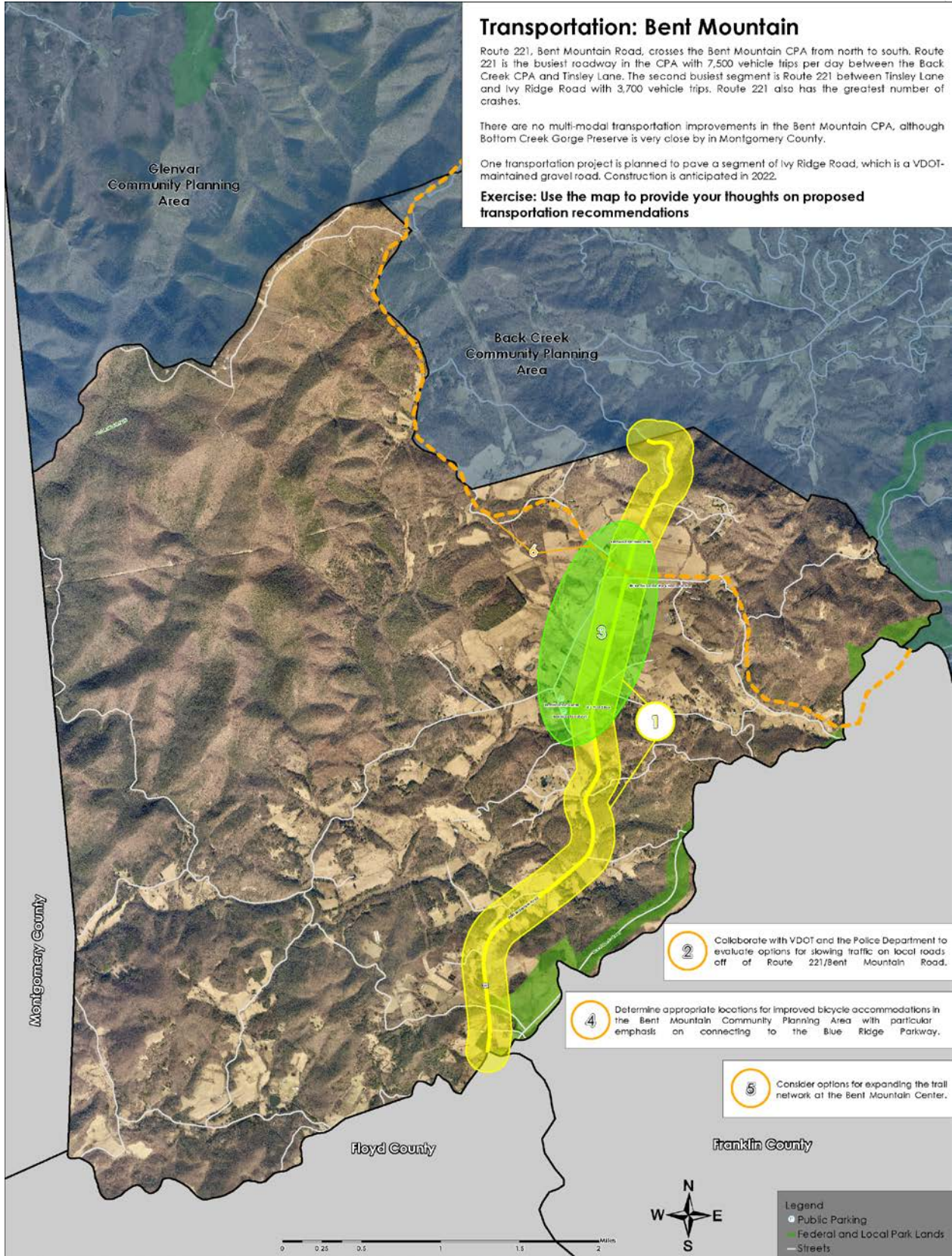
### Transportation: Bent Mountain

Route 221, Bent Mountain Road, crosses the Bent Mountain CPA from north to south. Route 221 is the busiest roadway in the CPA with 7,500 vehicle trips per day between the Back Creek CPA and Tinsley Lane. The second busiest segment is Route 221 between Tinsley Lane and Ivy Ridge Road with 3,700 vehicle trips. Route 221 also has the greatest number of crashes.

There are no multi-modal transportation improvements in the Bent Mountain CPA, although Bottom Creek Gorge Preserve is very close by in Montgomery County.

One transportation project is planned to pave a segment of Ivy Ridge Road, which is a VDOT-maintained gravel road. Construction is anticipated in 2022.

**Exercise: Use the map to provide your thoughts on proposed transportation recommendations**



2 Collaborate with VDOT and the Police Department to evaluate options for slowing traffic on local roads off of Route 221/Bent Mountain Road.

4 Determine appropriate locations for improved bicycle accommodations in the Bent Mountain Community Planning Area with particular emphasis on connecting to the Blue Ridge Parkway.

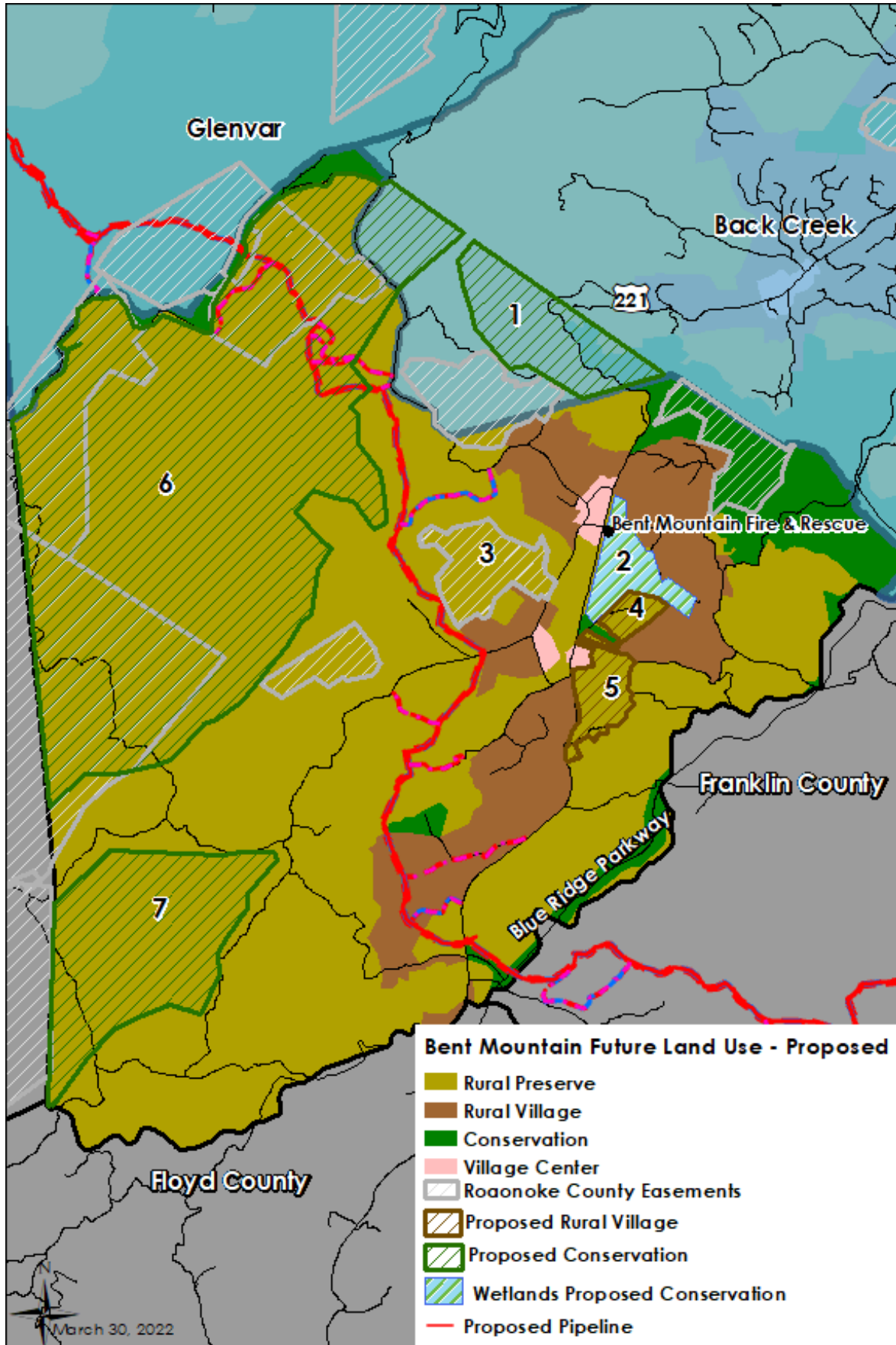
5 Consider options for expanding the trail network at the Bent Mountain Center.

Legend  
 ● Public Parking  
 ■ Federal and Local Park Lands  
 — Streets

# Roanoke County 200 Plan: Spring 2022 Community Input Summary



Land Use, Natural & Cultural Resources, Community Facilities & Infrastructure Survey: Bent Mountain		
	32 Respondents	
Natural and Cultural Resources	Yes	No
1. Protect and improve the quality of water in our streams, creeks and rivers.	30	0
2. Coordinate with State agencies regarding floodplain risks and prevention.	26	3
3. Reduce quantity and improve quality of stormwater.	22	6
4. Protect and prevent risks to surface waterways, reservoirs, underground aquifers and drinking water wells.	30	0
5. Beautify County roadways and public areas.	24	6
6. Protect viewsheds from the ridges and from the valleys.	30	0
7. Clean up and prevent litter and illegal dumping.	28	1
8. Protect steep slope areas.	29	1
9. Protect trees and forests and increase tree canopy.	29	1
10. Protect natural areas and wildlife habitats.	29	1
11. Coordinate with State agencies regarding historic and cultural resources, including cemeteries and archaeological sites.	19	1
Land Use - Activity Centers	Yes	No
1. Do you support the location of the activity centers shown on the map?	20	0
2. Are there other areas in Roanoke County that should be designated as an activity center?	19	1
Land Use - Changes to Future Land Use Map	Yes	No
1. From Rural Preserve to Conservation	19	1
2. From Rural Preserve to Conservation	15	5
3. From Rural Preserve to Conservation	17	3
4. From Rural Preserve to Rural Village	19	1
5. From Rural Preserve to Rural Village	19	1
6. From Rural Preserve to Conservation	15	3
7. From Rural Preserve to Conservation	15	2



# Roanoke County 200 Plan: Spring 2022 Community Input Summary



<b>Community Facilities &amp; Infrastructure: Parks, Recreation &amp; Tourism</b>	<b>Yes</b>	<b>No</b>
1. Evaluate new park, greenway, and blueway opportunities.	15	3
2. Evaluate on- and off- road connectivity options between parks, neighborhoods, and community facilities.	15	2
3. Continue coordination on regional efforts to enhance and develop outdoor recreation opportunities in our communities.	16	2
4. Update the Parks, Recreation & Tourism Master Plan.	16	2
5. Continue promotion of the Park Partners Program to encourage citizens and businesses, and organizations to adopt a park, greenway, or trail.	16	2
6. Educate citizens on park ordinance updates (i.e. park sign updates, dog-friendly parks/special events and leash laws, drones, etc.).	17	1
7. Continue developing programs that allow for safer post-COVID plans that balance community needs with available staffing resources.	13	5
8. Trail connections between Happy Hollow Gardens and Poor Mountain Nature Preserve in the 2018 Roanoke Valley Greenway Plan.	17	1
9. Evaluate park, greenway/trail, and blueway options along Back Creek.	16	2
10. Roanoke County Parks, Recreation & Tourism and Roanoke County Public Libraries partner with Bent Mountain Community Center about programs and marketing.	16	2
11. Evaluate park and trail needs (i.e. boardwalk trail maintenance, tennis court conversion to pickleball, etc.).	15	3
12. Analyze potential on- and off-road alternatives for transportation and outdoor recreation.	15	3
13. Host volunteer workdays (i.e. Clean Valley Day on April 9).	16	2
<b>Community Facilities &amp; Infrastructure: General Services</b>	<b>Yes</b>	<b>No</b>
1. Evaluate recycling program options.	16	2
2. Complete planned Roanoke County Fire Department Facilities Assessment.	18	0
3. Complete planned Roanoke County Administration Center Assessment.	17	1
<b>Community Facilities &amp; Infrastructure: Public Libraries</b>		
1. Improve services and continue enhancing facilities.	17	1
2. Evaluate programming needs and wants based on a variety of data and customer feedback.	16	2
3. Implement responsive, community focused program that serves people of all ages and backgrounds.	18	0
4. Ensure timely delivery of all circulating materials.	17	1
5. Raise level of engagement with the community, and increase awareness about library services and programs.	17	1
<b>Community Facilities &amp; Infrastructure: Communication &amp; Information Technology</b>	<b>Yes</b>	<b>No</b>
1. Explore opportunities to extend broadband service with universal availability and access to high-speed Internet in unserved and under-served areas.	18	0
2. Explore alternative broadband and cell phone providers for choice and competition.	18	0
3. Explore more public-private partnerships to implement more stages of Roanoke County's Rural Broadband Initiative to bring high-speed Internet to homes without broadband access.	17	0
4. Explore providing improved cell phone service in unserved and under-served areas.	17	0
5. Consider submitting applications for the Virginia Telecommunications Initiative (VATI) grant and other grants.	17	0
<b>Community Facilities &amp; Infrastructure: Public Safety</b>	<b>Yes</b>	<b>No</b>
1. Provide the efficient delivery of public safety services with minimal response times.	16	0
2. Enhance and maintain public safety staffing.	16	0
3. Enhance and maintain facilities and equipment.	16	0
4. Provide a high-level of citizen engagement and educational opportunities.	16	0