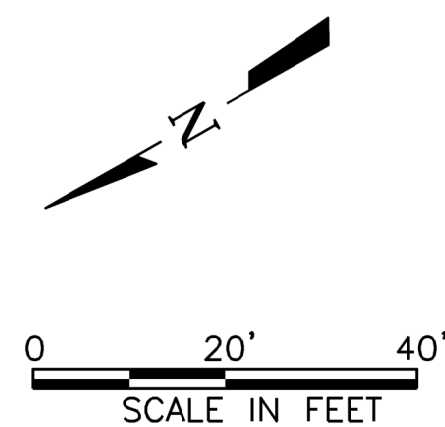
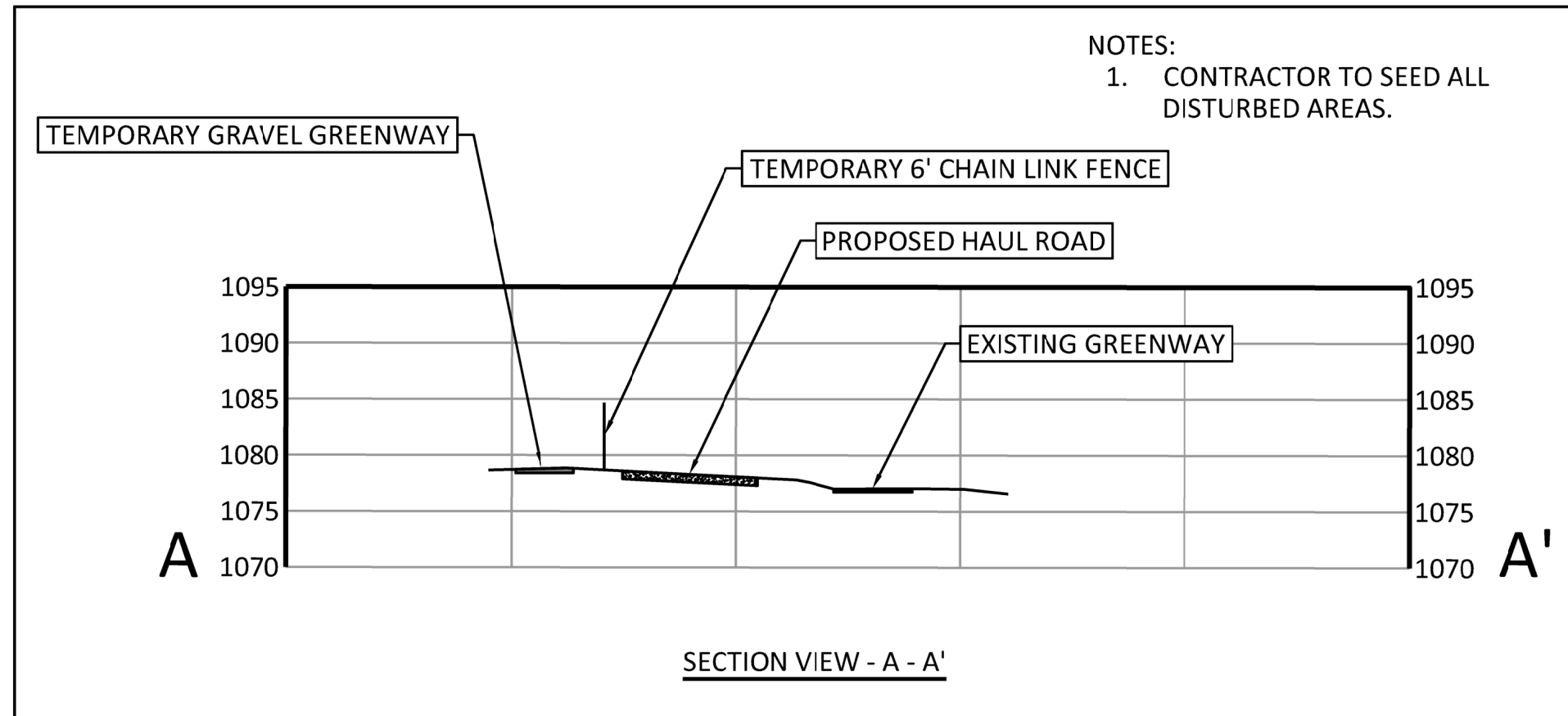
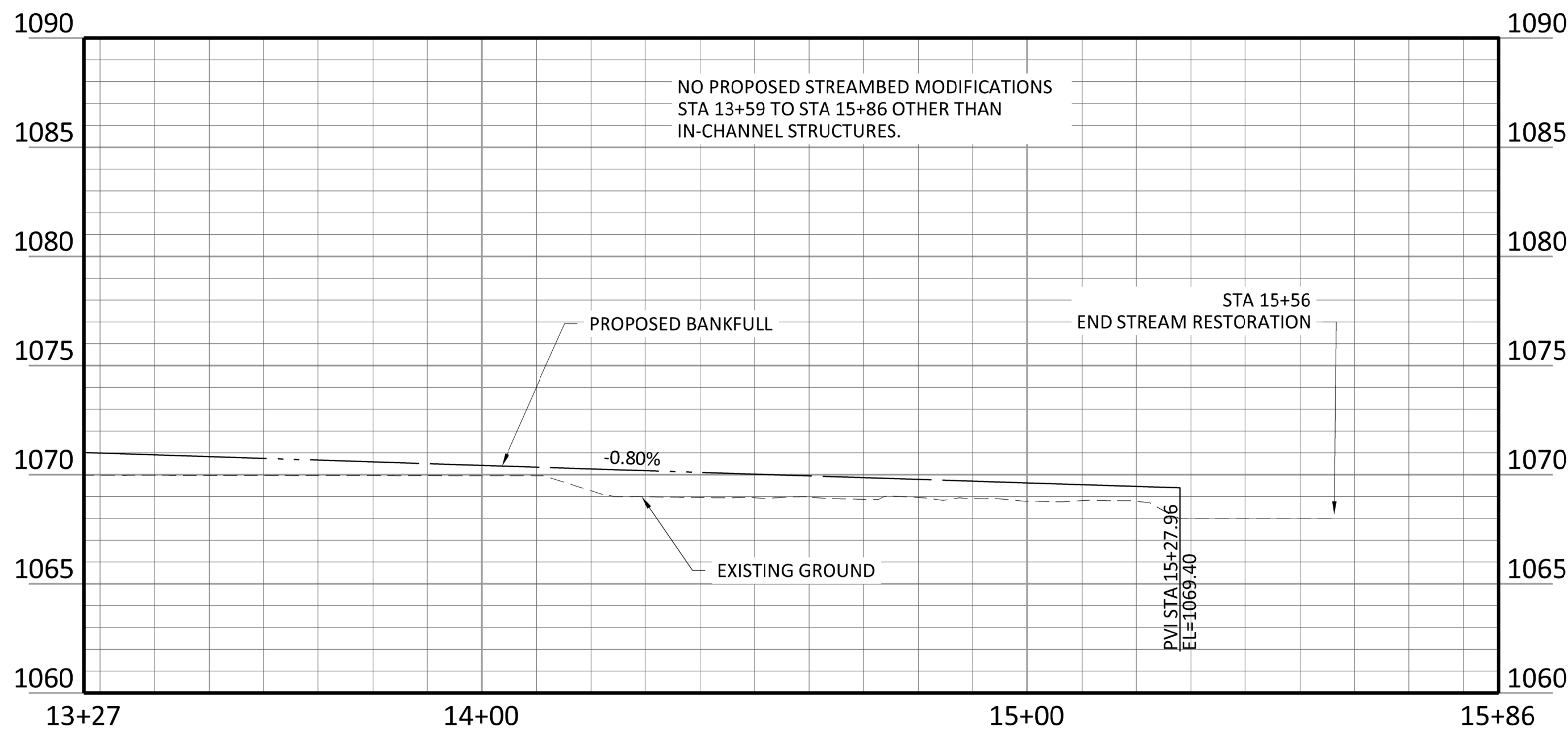
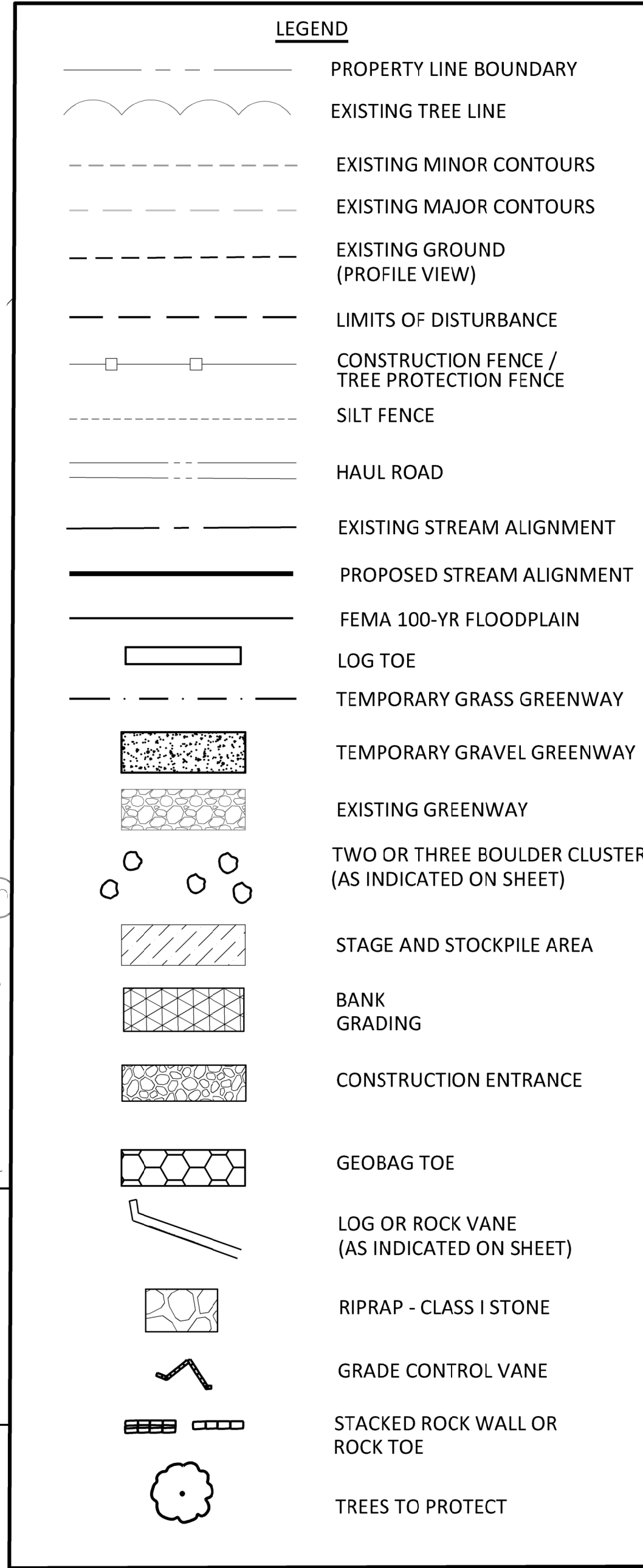
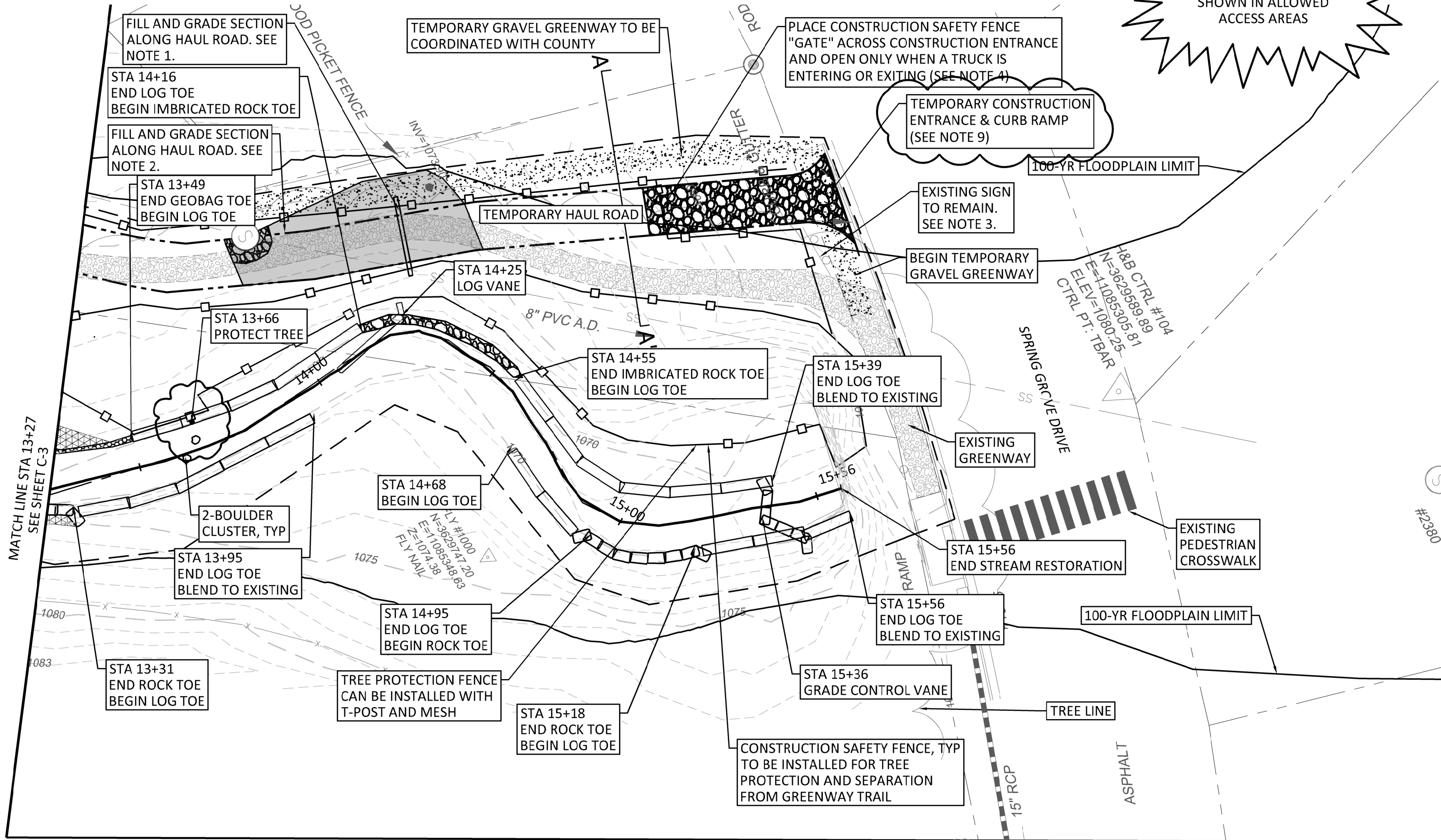


NOTES:

- CONTRACTOR TO FILL AND GRADE SECTION OF TEMPORARY HAUL ROAD. INSTALL A 12" HDPE IN EXISTING LOW SPOT TO CONVEY WATER ACROSS THE HAUL ROAD. ENSURE 2' OF COVER AND POSITIVE DRAINAGE TOWARDS THE CREEK.
- FILL HAUL ROAD GRADE TO BE FLUSH WITH SS MANHOLE WITH MIN 3' DIAMETER GRAVEL JACKET. RESTORE GREENWAY TO EXISTING CONDITIONS POST-CONSTRUCTION.
- EXISTING GREENWAY SIGN TO REMAIN. CONTRACTOR TO REPAIR AND REPLACE SIGNAGE IF DAMAGED.
- 6' CHAIN LINK FENCE SHALL BE CONSTRUCTED FROM SPRING GROVE DRIVE TO SANITARY SEWER MANHOLE (STA 13+94, LT 57.66) AS SHOWN ON THE PLANS. FROM STA 13+94, LT 57.66 TO STA 0+71, CONSTRUCTION SAFETY FENCE SHALL BE CONSTRUCTED TO SEPARATE PEDESTRIAN AREA FROM CONSTRUCTION AREA.
- FEMA FIS MAP # 51161C0186G
- CONTRACTOR SHALL CONTACT VIRGINIA 811 PRIOR TO CONSTRUCTION AND OBTAIN TICKET.
- CONSTRUCTION FENCING SHALL BE PLACED AROUND ALL TREES TO BE PROTECTED PRIOR TO COMMENCEMENT OF CONSTRUCTION ACTIVITIES.
- DISTURB ONLY THE ACCESS AREAS NOTED ON THE PLANS TO ACCESS THE STREAM AND DO NOT REMOVE ANY TREES WITHIN THE TREE PROTECTION AREAS OR FLAGGED FOR PROTECTION UNLESS INSTRUCTED BY THE ENGINEER.
- CONTRACTOR TO LOCATE CONSTRUCTION ENTRANCE AND CHAIN LINK FENCE IMMEDIATELY WEST OF EXISTING FIBER OPTIC ACCESS AND SHALL AVOID IMPACTS OR BLOCKING ACCESS TO THE FIBER OPTIC ACCESS BOX.

TREE CLEARING:

- THERE IS A 15' TREE CLEARING ZONE FROM THE TOP OF STREAMBANK (SEE DT-7 REVEGETATION SECTION).
- THE FIRST 5' FROM THE TOP OF BANK, ANY TREE LESS THAN 10" (UNLESS SPECIFIED OTHERWISE) CAN BE CUT OR MULCHED, BUT NOT GRUBBED.
- FROM 5' AND 15' FROM TOP OF BANK, VEGETATION LESS THAN 10" CAN BE CLEARED OR GRUBBED UNLESS IDENTIFIED AS BEING IN A TREE PROTECTION ZONE ON THE PLANS.



Freese and Nichols, Inc.
Virginia Registered Engineering Firm #0407007129

EMILY D. BROWN
EMILY DARR BROWN
Lic. No. 0402065407
4.26.2023
PROFESSIONAL ENGINEER

RESTORATION OF WOLF CREEK PHASE II

CIVIL

PLAN AND PROFILE
STA 13+50 TO END

NO.	ISSUE	BY	DATE	284 JOB NO.	RNC19591	DATE	2/8/2023	DESIGNED	LRW	DRAWN	LRW	REVISED	4.26.2023	FILE NAME	STREAM-PP.dwg	CHECKED	BMD
Bar is one inch on original drawing. One inch on this sheet. Adjust scale.																	
ADDENDUM 1																	
VERIFY SCALE																	
0																	
SHEET																	
C-4																	
SEQ.																	

ISSUED FOR BID