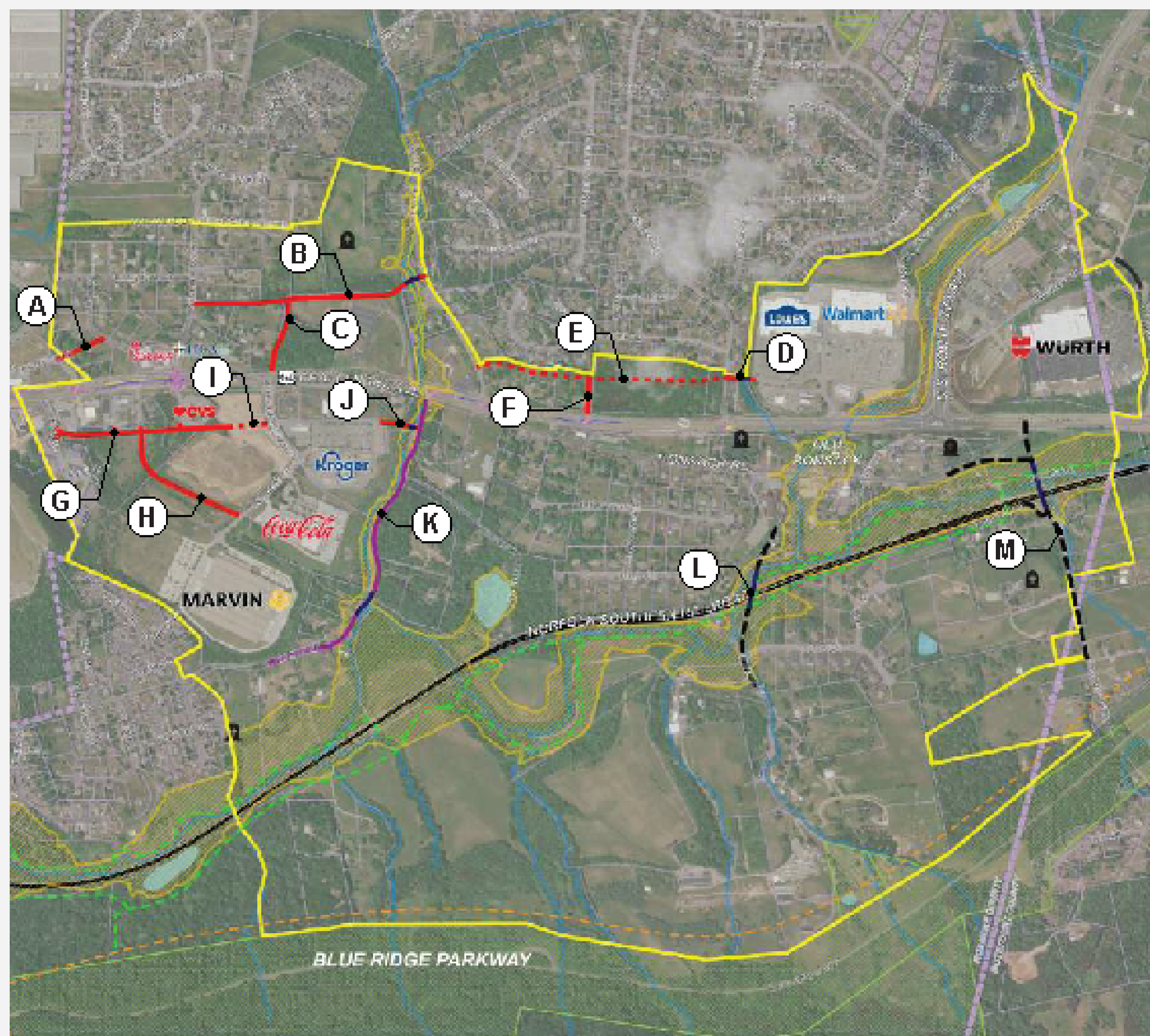


# Route 460 Land Use and Connectivity Study Transportation Improvement Options

## XI. Recommended Priority of Improvement Options

Each of the potential improvement projects described in this report have different capacity to improve the quality of life in the Bonsack community. Each has the potential to improve safety and convenience, but each comes with different costs to implement. Recognizing the need to identify opportunities in a context that can be evaluated for prioritization by Roanoke County, the matrix to the right identifies some of the cost and benefit expectations of each of the improvements noted in this report.

Note, the cost, safety, and congestion/convenience scales are relative to one another, and do not reflect real dollars or expected level of service improvements, respectively.



Opportunity	Improvement	Description	Safety Impact	Congestion/Convenience Impact	Mitigate New Development	Pedestrian/ Bicycle Accommodations	Level of Public Interest	Cost	Recommended Priority
Carson Road	K	Carson Road Safety Improvements	High	High	No	Yes, Where Feasible	High	High	High
Access to East of Railroad	L	Layman Road Grade-Separated Railroad Crossing and Roadway Realignment	High	High	Yes	Yes, Where Feasible	Medium	High	High
Access to East of Railroad	M	Glade Creek Road Grade-Separated Railroad Crossing and Connection to Route 460	High	High	Yes	Yes, Where Feasible	Medium	High	High
Greenway	N	Glade Creek Greenway Extension Generally along Glade Creek	High for Pedestrians and Bicyclists	Medium	No	N/A	High	High	High
Blue Hills to East Ruritan	A	Trail Drive to Blue Hills Village Drive connection	Medium	High	Yes	Yes, Where Feasible	Medium	Medium	High
Blue Hills to East Ruritan	B	West Ruritan Road to East Ruritan Road connection	Medium	High	Yes	Yes, Where Feasible	Medium	High	Medium
Valley Gateway	G	Evan Lane to CVS Private Driveway	Medium	High	Yes	Yes, Where Feasible	High	High	Medium
East Ruritan to Walmart	E	East Ruritan Road to Hunt-ridge Drive (Optional)	Medium	High	Yes	Yes, Where Feasible	Low	High	Medium
Valley Gateway	H	Route 460/Trail Drive Intersection to Integrity Drive	Medium	High	Yes	Yes, Where Feasible	High	High	Medium
Valley Gateway	I	CVS Private Driveway to Valley Gateway Boulevard (Optional)	Medium	High	Yes	Yes, Where Feasible	Medium	Medium	Medium
Blue Hills to East Ruritan	C	Route 460/Valley Gateway Intersection to "B"	Medium	Medium	Yes	Yes, Where Feasible	High	Medium	Medium
East Ruritan to Walmart	F	Country Corner crossover to "E"	Medium	Medium	Yes	Yes, Where Feasible	Low	Medium	Medium
East Ruritan to Walmart	D	Huntridge Road to Lowe's/ Walmart Parking Lot	Low	High	No	Yes, Where Feasible	Medium	High	Low
Valley Gateway	J	Kroger Parking Lot to Carson Road	Low	Medium	No	Yes, Where Feasible	High	High	Low