



Bonsack/Vinton Community Planning Area (CPA)

Seven Roanoke County 200 Plan open house planning meetings were held around Roanoke County in Spring 2022 for citizens to review draft goals and recommendation options based on the feedback received throughout the Fall 2021 community engagement. Draft goals were developed based on input that we received at the community meetings and online surveys in Fall 2021. Citizens reviewed and provided comments on the new draft goals and recommendations that will shape the draft Roanoke County 200 Plan document. The draft goals and recommendations displayed included natural and cultural resources, land use, community facilities and infrastructure, and transportation.

Community Meeting

The community meeting for the Bonsack/Vinton CPA was held in conjunction with the Mount Pleasant CPA on April 14, 2022 at the Vinton Community Center. There were 14 attendees.

Summary

Natural and Cultural Resources: The majority (89%) of survey and community meeting participants support the eleven initiatives to protect and improve ground, surface and stormwater resources; beautify the county's public areas, viewsheds and roadways; clean up garbage; protect steep slope areas; protect trees and forests, natural areas and wildlife habitats; as well as protection of historic and cultural resources.

Land Use: 93% of respondents support the activity centers as shown on the Activity Center Map, while 10% indicated interest in additional activity centers. 75% of respondents support the proposed changes to the Future Land Use Map.

Community Facilities and Infrastructure:

1. Parks, Recreation and Tourism: 81% of respondents support the countywide initiatives as well as the following items pertaining to the Bent Mountain CPA:
 - a. Implementation of Explore Park Adventure Plan.
 - b. Evaluate opportunities for parks & greenways/trails (Glade Creek, Wolf Creek and Read Mountain).
 - c. Explore new park, greenway and blueway opportunities.
 - d. Continue coordination with the Blue Ridge Parkway for implementation of the Roanoke Valley Trail Plan.
 - e. Continued evaluation of park, recreation, and programming needs at existing parks (i.e. Jae Valley Park – Back Creek).
2. General Services: 78% of respondents support recycling options and assessments of County Fire Department Facilities and the Administration Center.
3. Public Libraries: 72% of respondents support the countywide library system initiatives.
4. Communications and Information Technology: 91% of respondents support expansion and improvement of broadband and cell phone access.

5. Public Safety: 91% of respondents support countywide public safety initiatives.

Transportation:

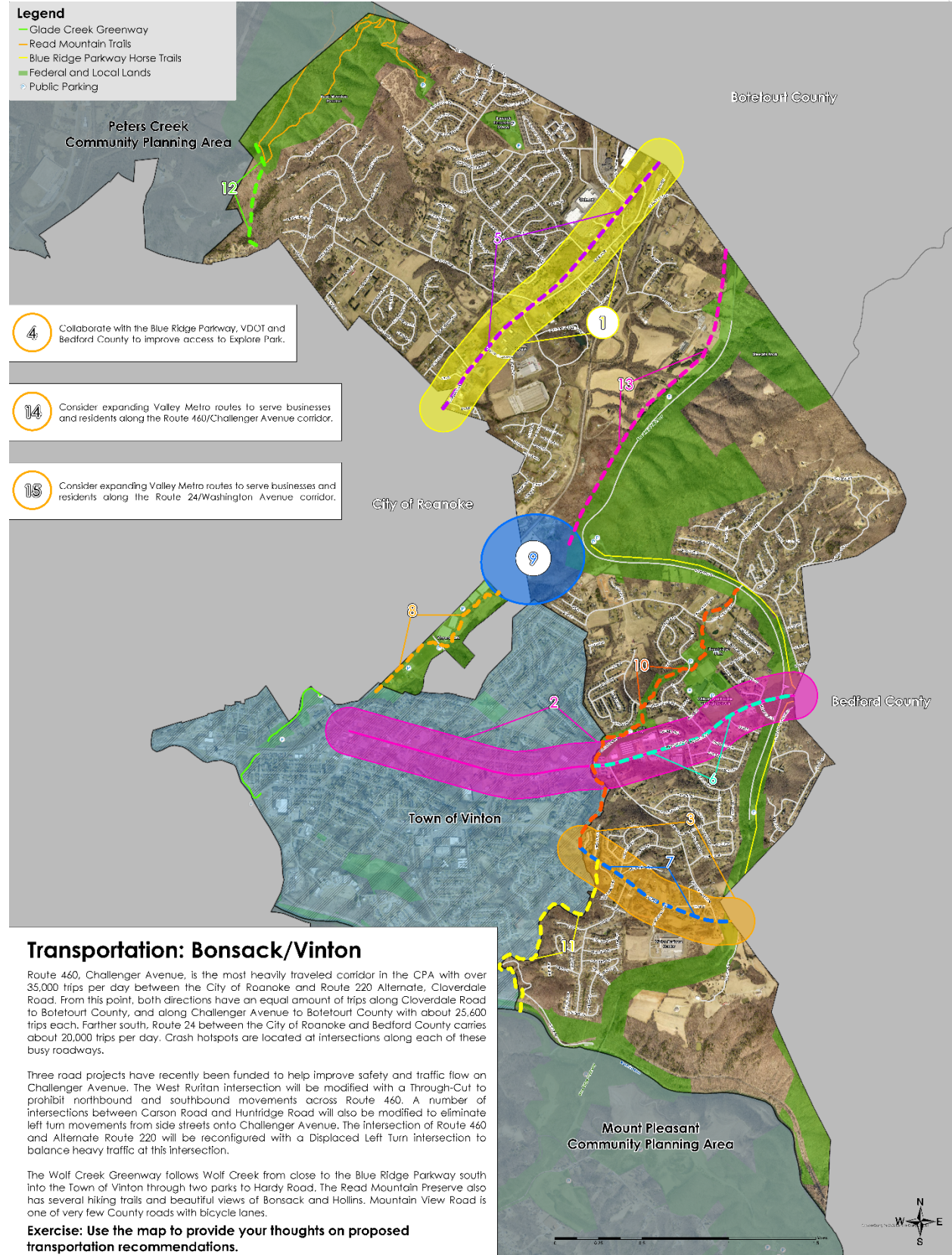
Bonsack/Vinton CPA Transportation Questions	
22 Survey Respondents	
Percentage of respondents support	
1. Route 460 Land Use Connectivity Study	90%
2. Washington Ave Corridor Study	90%
3. Hardy Road improvements	80%
4. Explore Park Access	80%
5. Route 460 Challenger bike & ped infrastructure	30%
6. Washington Ave bike & ped infrastructure	70%
7. Hardy road bike & ped infrastructure	30%
8. Glade Creek Greenway Vinyard Park	80%
9. Glade Creek Greenway to BRP	80%
10. Wolf Creek Greenway improvements	80%
11. Wolf Creek greenway Hardy Rd to RR Greenway	70%
12. Read Mountain Greenway	84%
13. Perimeter Trail	84%
14. Expand Valley Metro Route 460 Challenger Ave	53%
15. Expand Valley Metro Route 24 Washington Ave	58%

Note: Numbers in charts refer to numbered projects on transportation map (page 4).



Bonsack/Vinton Transportation Ranking Questions	
22 Respondents	
Proposed Recommendation	Rank
1. Route 460 Land Use and Connectivity Study	1
2. Washington Avenue corridor improvement study	2
4. Improve access to Explore Park	3 (tie)
8. Glade Creek Greenway through Vinyard Park	3 (tie)
3. Multi-modal improvements on Hardy Road	5 (tie)
10. Improve Wolf Creek Greenway	5 (tie)
11. Wolf Creek Greenway - Hardy Road to Roanoke River Greenway	7 (tie)
12. Read Mountain Greenway - City of Roanoke to Read Mountain Preserve	7 (tie)
14. Extend Valley Metro to Route 460/Challenger Avenue	7 (tie)
9. Glade Creek Greenway - Vinyard Park East to Blue Ridge Parkway	10 (tie)
15. Extend Valley Metro to Route 24/Washington Avenue	10 (tie)
6. Bicycle/pedestrian infrastructure - Washington Avenue to Bedford County	12 (tie)
13. Perimeter Trail - Glade Creek Greenway to Botetourt County	12 (tie)
5. Bicycle/pedestrian infrastructure - Route 460/Challenger Avenue connect to neighborhoods	14 (tie)
7. Bicycle/pedestrian infrastructure along Hardy Road - Vinton to Bedford County	14 (tie)

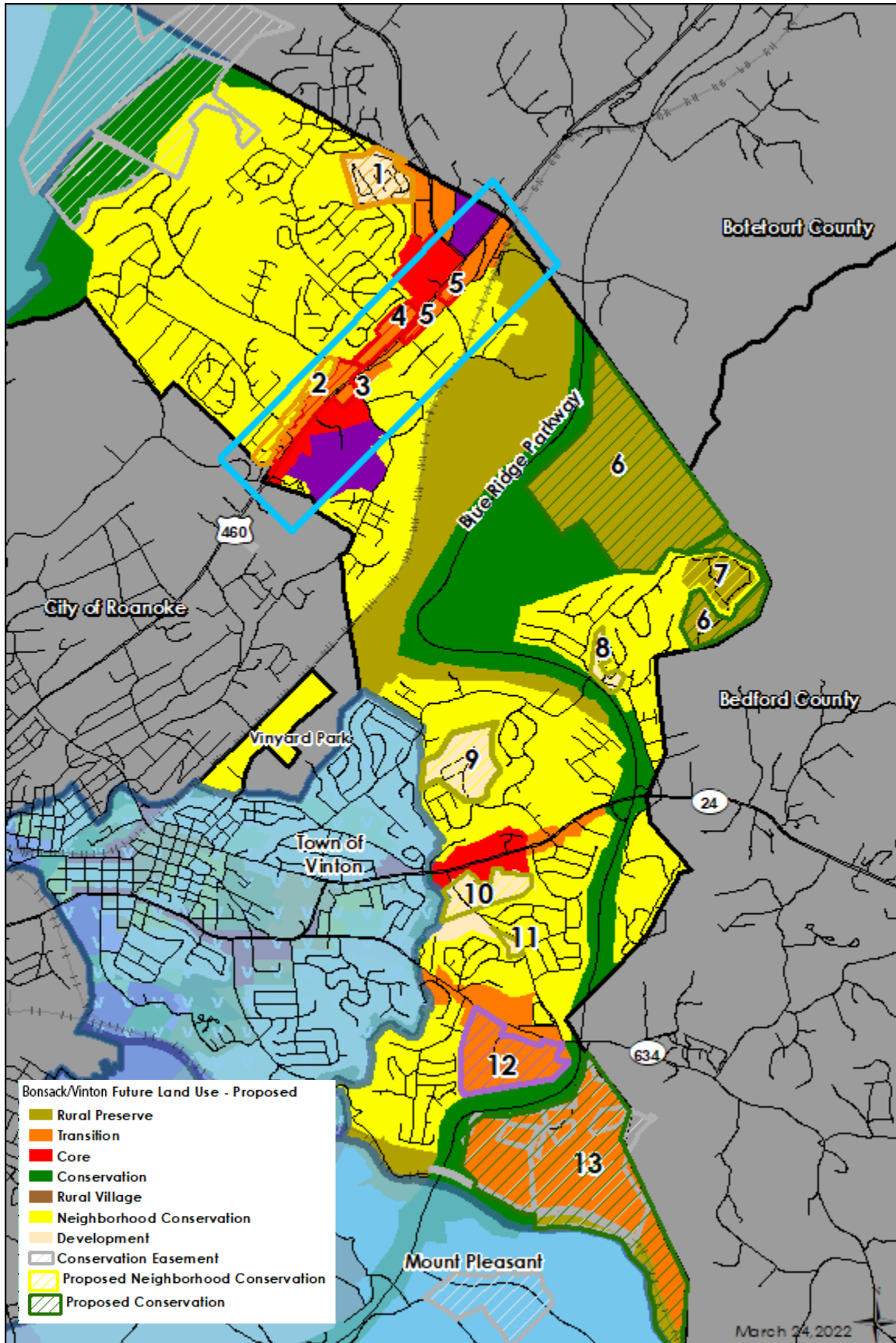
Note: Numbers in charts refer to numbered projects on transportation map (page 4).



Roanoke County 200 Plan: Spring 2022 Community Input Summary



Land Use, Natural & Cultural Resources, Community Facilities & Infrastructure Survey: Bonsack/Vinton		
	54 Respondents	
Natural and Cultural Resources	Yes	No
1. Protect and improve the quality of water in our streams, creeks and rivers.	53	1
2. Coordinate with State agencies regarding floodplain risks and prevention.	47	6
3. Reduce quantity and improve quality of stormwater.	46	7
4. Protect and prevent risks to surface waterways, reservoirs, underground aquifers and drinking water wells.	52	2
5. Beautify County roadways and public areas.	44	10
6. Protect viewsheds from the ridges and from the valleys.	43	10
7. Clean up and prevent litter and illegal dumping.	51	3
8. Protect steep slope areas.	46	7
9. Protect trees and forests and increase tree canopy.	47	6
10. Protect natural areas and wildlife habitats.	49	5
11. Coordinate with State agencies regarding historic and cultural resources, including cemeteries and archaeological sites.	50	4
Land Use - Activity Centers	Yes	No
1. Do you support the location of the activity centers shown on the map?	29	2
2. Are there other areas in Roanoke County that should be designated as an activity center?	5	46
Land Use - Changes to Future Land Use Map	Yes	No
1. From Development to Transition	20	8
2. From Neighborhood Conservation to Transition	16	11
3. From Transition to Core	18	8
4. From Transition to Core	18	9
5. From Transition to Core	18	8
6. From Rural Preserve to Conservation	23	4
7. From Rural Preserve to Neighborhood Conservation	17	9
8. From Development to Neighborhood Conservation	25	2
9. From Development to Neighborhood Conservation	25	3
10. From Development to Neighborhood Conservation	26	2
11. From Development to Neighborhood Conservation	25	3
12. From Transition to Principal Industrial	19	9
13. From Transition and Rural Preserve to Conservation	21	6



Roanoke County 200 Plan: Spring 2022 Community Input Summary



Community Facilities & Infrastructure: Parks, Recreation & Tourism	Yes	No
1. Evaluate new park, greenway, and blueway opportunities.	22	4
2. Evaluate on- and off- road connectivity options between parks, neighborhoods, and community facilities.	23	3
3. Continue coordination on regional efforts to enhance and develop outdoor recreation opportunities in our communities.	21	5
4. Update the Parks, Recreation & Tourism Master Plan.	23	3
5. Continue promotion of the Park Partners Program to encourage citizens and businesses, and organizations to adopt a park, greenway, or trail.	20	5
6. Educate citizens on park ordinance updates (i.e. park sign updates, dog-friendly parks/special events and leash laws, drones, etc.).	21	4
7. Continue developing programs that allow for safer post-COVID plans that balance community needs with available staffing resources.	15	8
8. Continue implementation of the Explore Park Adventure Plan (i.e. vehicular access between Blue Ridge Parkway and Hardy Road, mountain bike trail improvements, Roanoke River Greenway, etc.).	22	3
9. Evaluate opportunities for parks (i.e., Bonsack) and greenways/trails (i.e. Glade Creek Greenway, Wolf Creek Greenway, Read Mountain Preserve expansion, etc.).	23	1
10. Evaluate new park, greenway and blueway opportunities in the community.	22	3
11. Continue coordination with the Blue Ridge Parkway for implementation of the Roanoke Valley Trail Plan.	20	4
12. Continued evaluation of park, recreation, and programming needs at existing parks (i.e. Jae Valley Park – Back Creek).	20	5
Community Facilities & Infrastructure: General Services	Yes	No
1. Evaluate recycling program options.	20	6
2. Complete planned Roanoke County Fire Department Facilities Assessment.	24	2
3. Complete planned Roanoke County Administration Center Assessment.	17	9
Community Facilities & Infrastructure: Public Libraries	Yes	No
1. Improve services and continue enhancing facilities.	16	8
2. Evaluate programming needs and wants based on a variety of data and customer feedback.	19	6
3. Implement responsive, community focused program that serves people of all ages and backgrounds.	20	4
4. Ensure timely delivery of all circulating materials.	21	4
5. Raise level of engagement with the community, and increase awareness about library services and programs.	18	6
Community Facilities & Infrastructure: Communication & Information Technology	Yes	No
1. Explore opportunities to extend broadband service with universal availability and access to high-speed Internet in unserved and under-served areas.	24	1
2. Explore alternative broadband and cell phone providers for choice and competition.	24	1
3. Explore more public-private partnerships to implement more stages of Roanoke County's Rural Broadband Initiative to bring high-speed Internet to homes without broadband access.	24	1
4. Explore providing improved cell phone service in unserved and under-served areas.	22	3
5. Consider submitting applications for the Virginia Telecommunications Initiative (VATI) grant and other grants.	20	3
Community Facilities & Infrastructure: Public Safety	Yes	No
1. Provide the efficient delivery of public safety services with minimal response times.	25	1
2. Enhance and maintain public safety staffing.	23	2
3. Enhance and maintain facilities and equipment.	24	1
4. Provide a high-level of citizen engagement and educational opportunities.	23	3