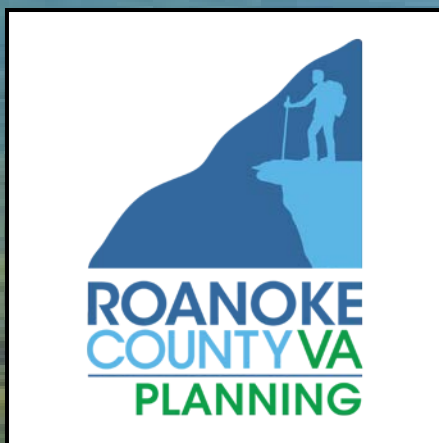




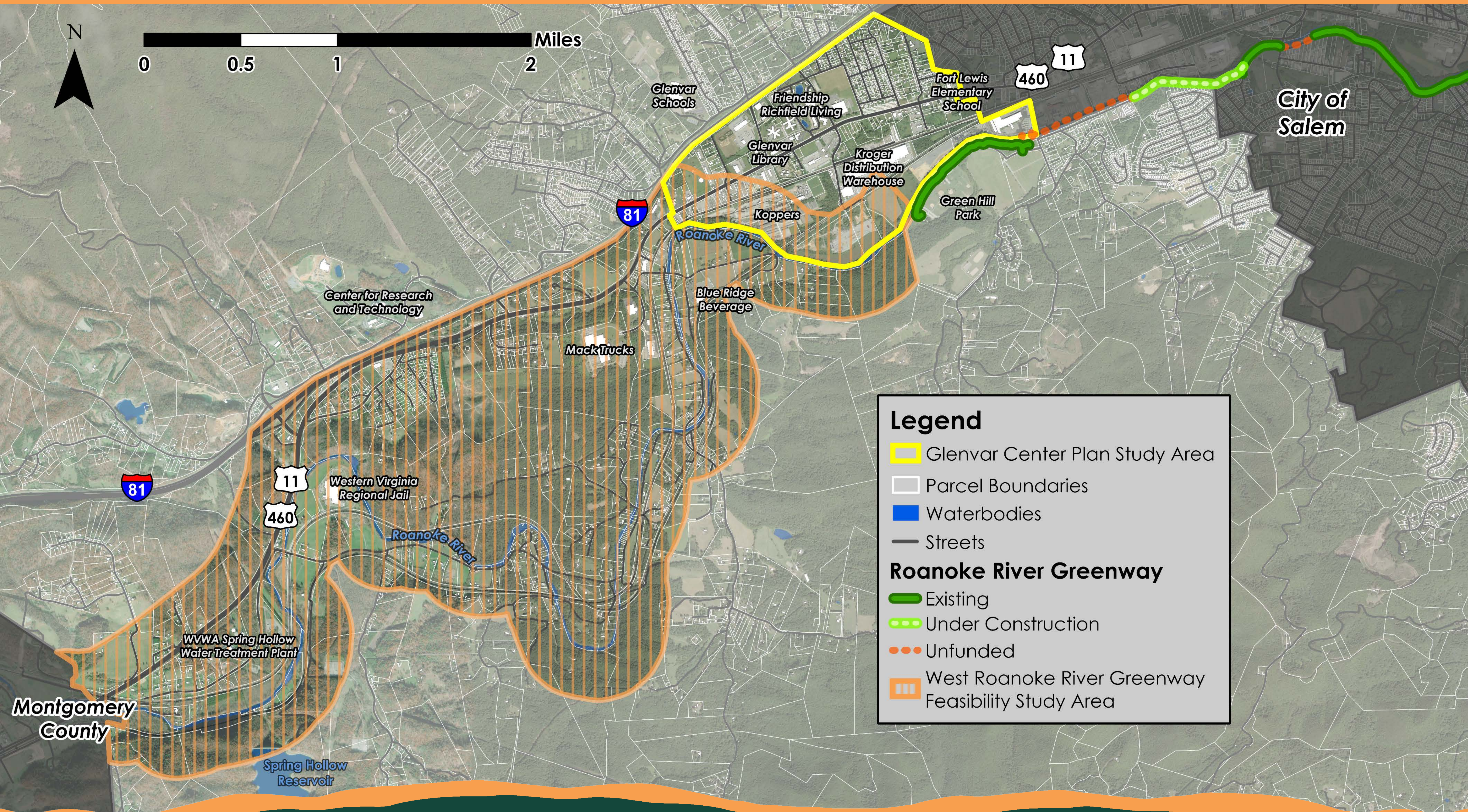


# MULTI-MODAL TRANSPORTATION





# ROANOKE RIVER GREENWAY



**Legend**

- Glenvar Center Plan Study Area
- Parcel Boundaries
- Waterbodies
- Streets

**Roanoke River Greenway**

- Existing
- Under Construction
- Unfunded
- West Roanoke River Greenway Feasibility Study Area



A scale bar with a black background and white markings. The word "Miles" is written in white at the right end. Numerical labels "0", "1.25", "2.5", and "5" are placed below the bar at regular intervals.

**Location:** Mile Marker 144  
to Exit 150

**Project:** Widening to three (3) lanes in both directions

**Status:** Anticipated to be completed in 2031

**Location:** Exit 141 to Exit 143

**Project:** Widening to three (3) lanes in both directions

**Status:** Complete

**Location:** Mile Marker 136  
to Exit 141

**Project:** Widening to three (3) lanes in both directions

**Status:** Anticipated to be completed in 2026

**Location:** Exit 128 to Exit 137

**Project:** Widening to three (3) lanes in both directions

**Status:** Anticipated to be advertised for construction in 2025

## Project Status

 Recently Completed

 Under Construction

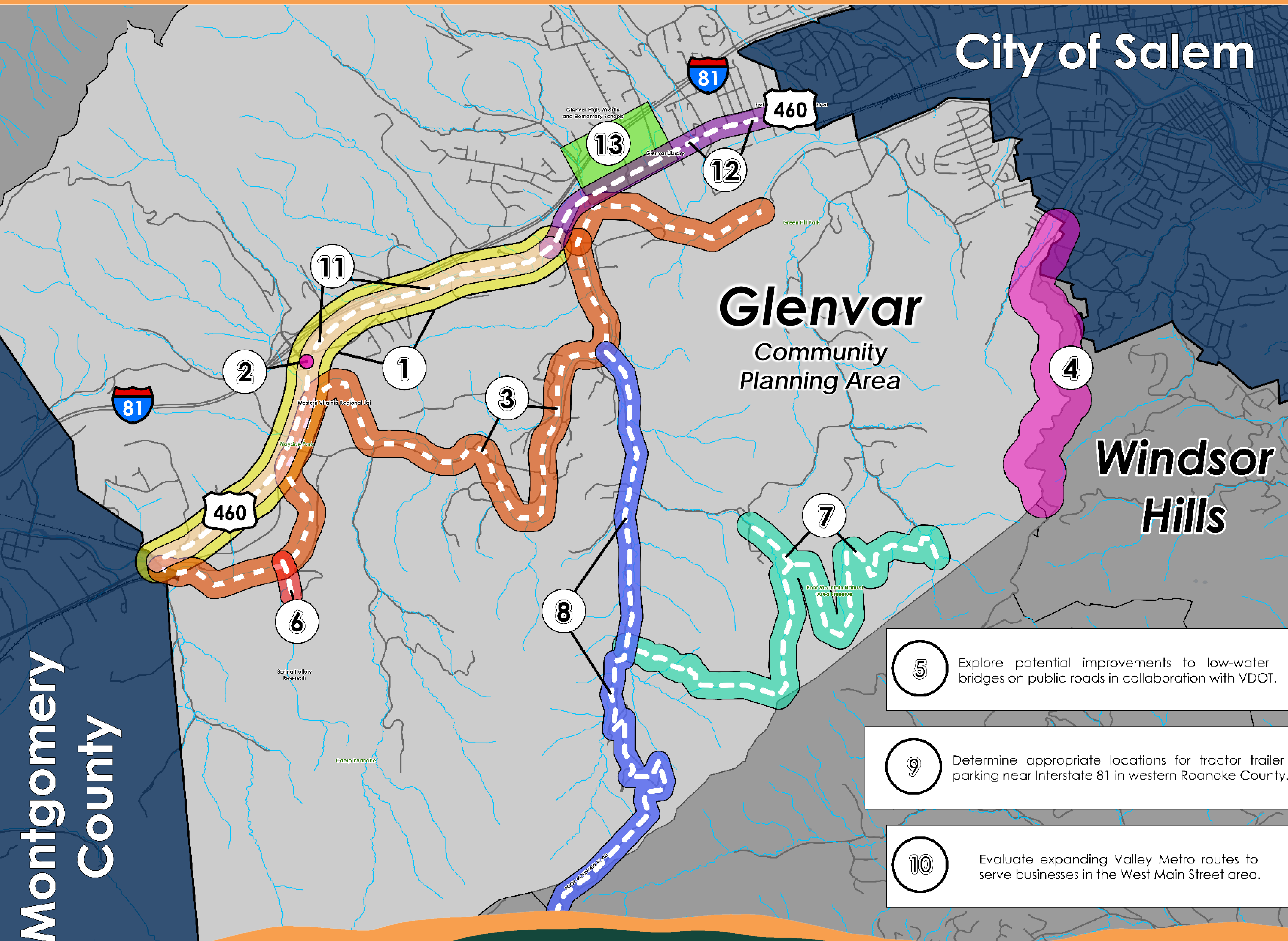
 Funded

# Glenvar Center Plan Study Area

# Montgomery County



# TRANSPORTATION RECOMMENDATIONS



## Priority transportation projects:

1. Determine potential road safety improvements for Route 11/460/West Main Street between Technology Drive and Montgomery County in collaboration with VDOT.
2. Improve safety at the I-81/Dow Hollow Road/West Main Street Intersection.
3. Determine alignments for the Roanoke River Greenway between Green Hill Park and Montgomery County, in collaboration with property owners and stakeholders.

## Other transportation projects:

4. Determine appropriate safety improvements for Twelve O' Clock Knob Road in collaboration with VDOT.
5. Explore potential improvements to low-water bridges on public roads in collaboration with VDOT.
6. Provide a connection from the Roanoke River Greenway to future recreation opportunities at Spring Hollow Reservoir.
7. Expand the trail network at the Poor Mountain Natural Area Preserve to connect to Poor Mountain Road and Harborwood Road.
8. Construct the Perimeter Trail south to connect the Roanoke River Greenway along Poor Mountain Road to the Blue Ridge Parkway on Bent Mountain.
9. Determine appropriate locations for tractor trailer parking near Interstate 81 in western Roanoke County.
10. Evaluate expanding Valley Metro routes to serve businesses in the West Main Street area.
11. Determine appropriate pedestrian/bicycle infrastructure on Route 11/460/West Main Street between Technology Drive and Montgomery County.
12. Complete sidewalk on both sides of West Main Street between the City of Salem and Technology Drive.
13. Provide pedestrian accommodations to connect the Glenvar Schools to businesses along West Main Street.