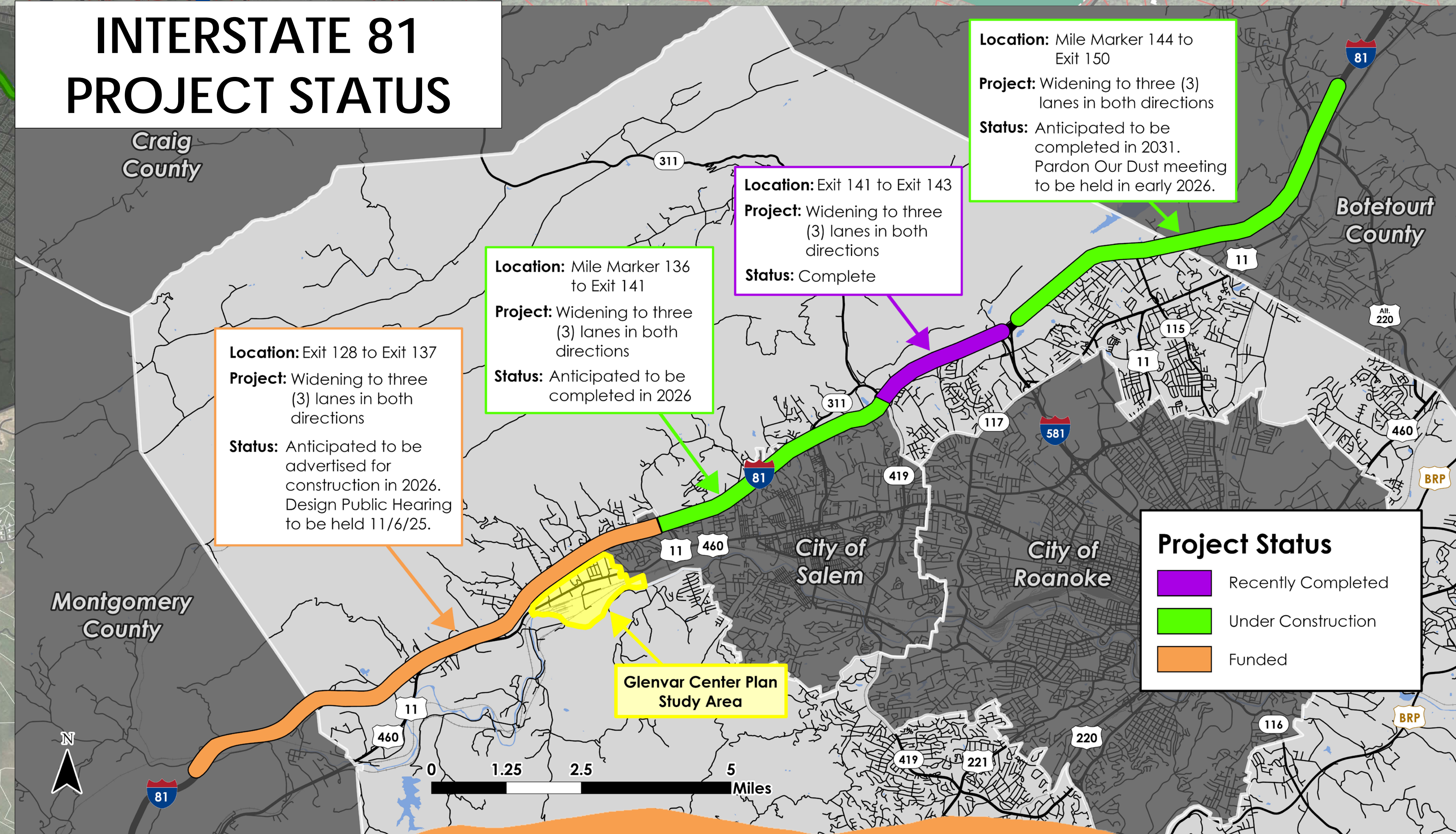
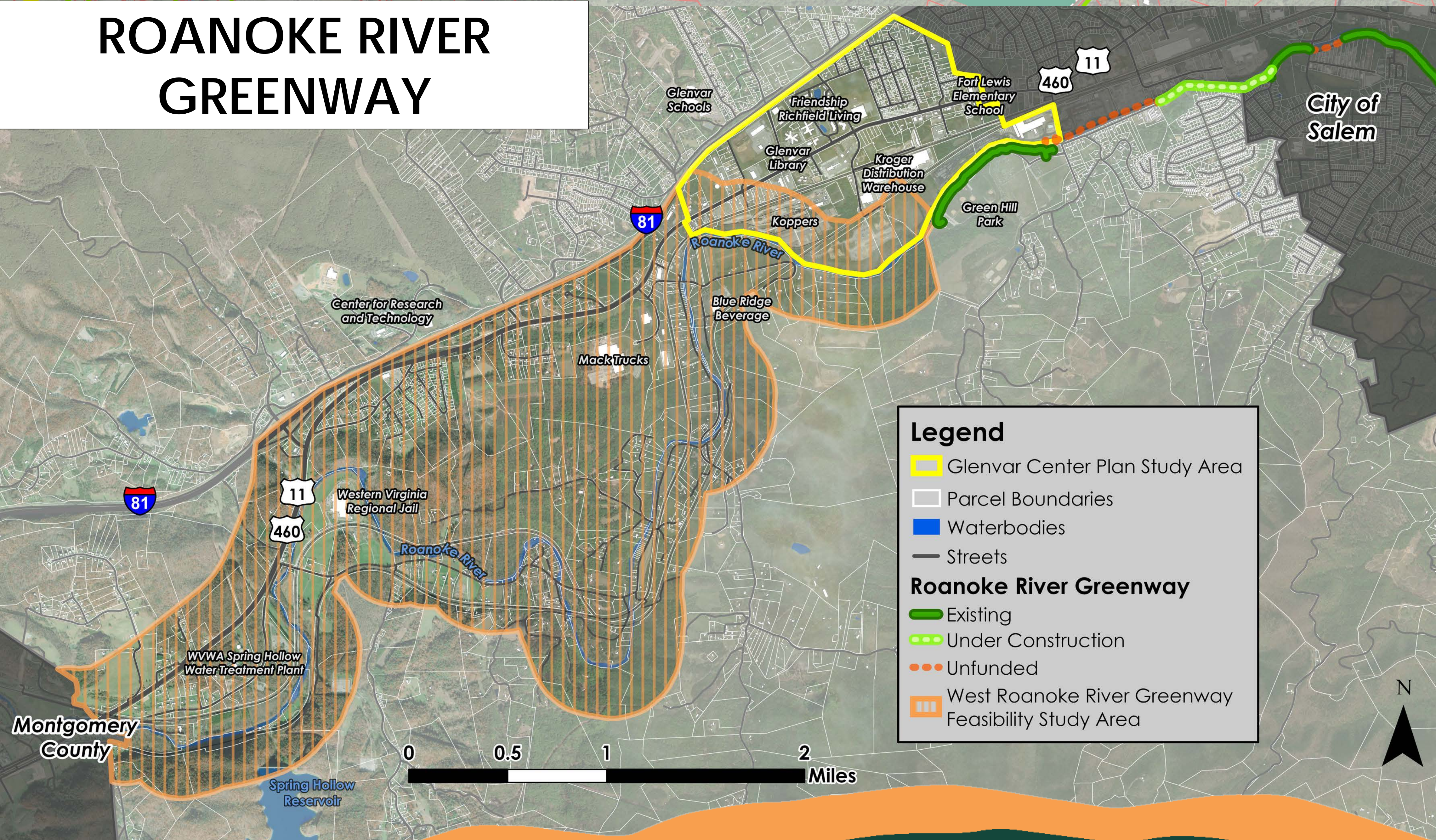
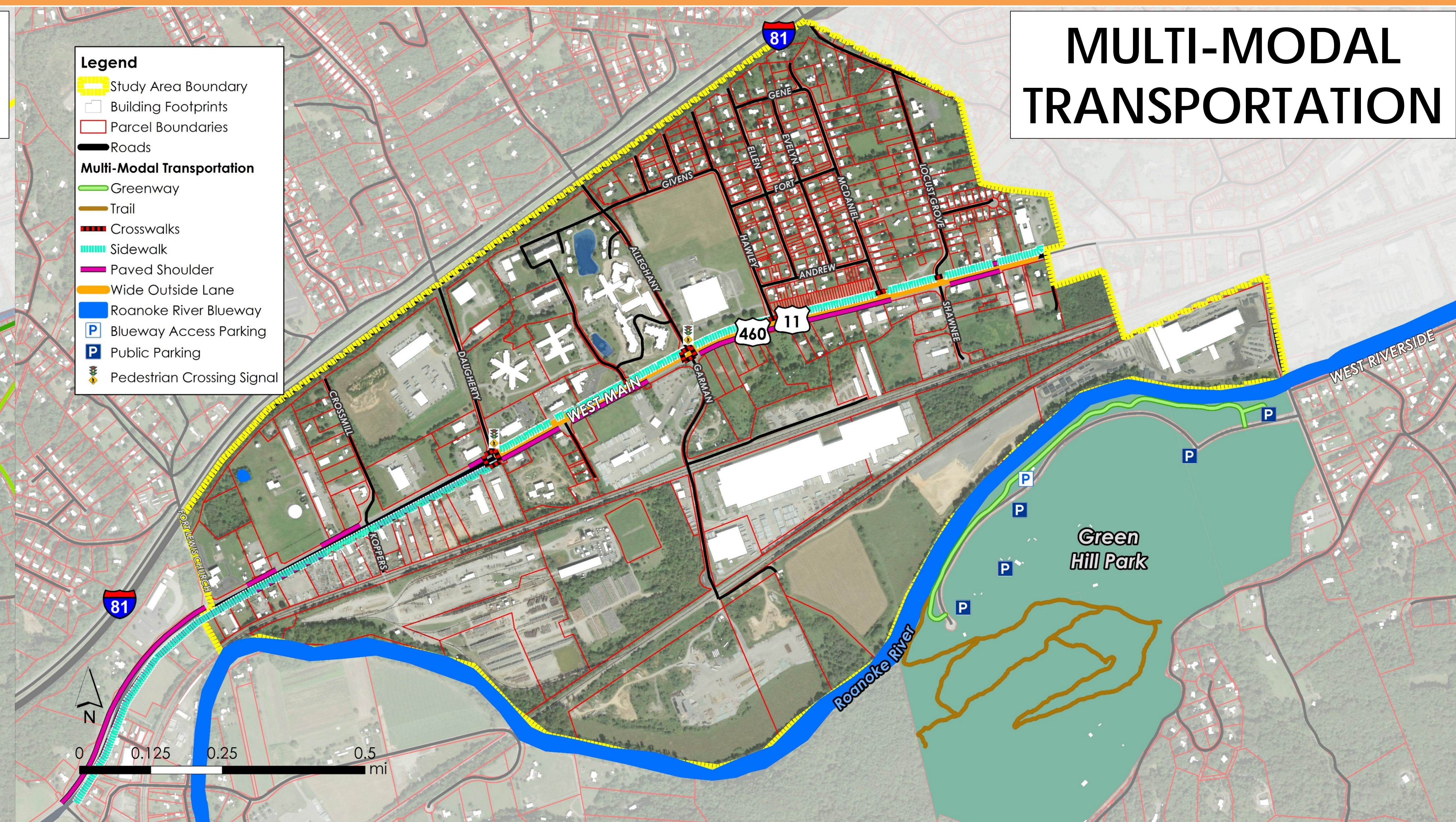
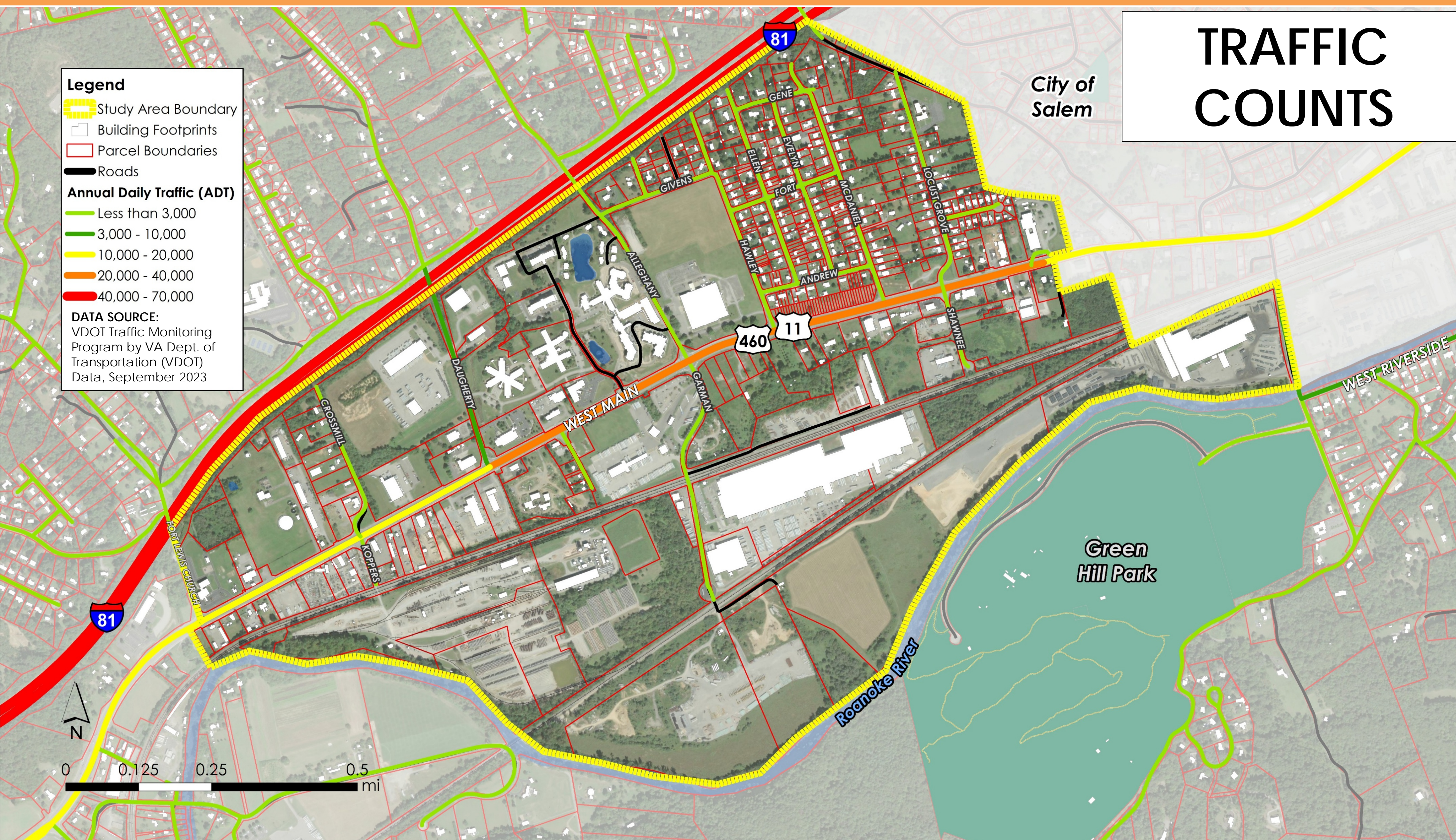




# TRANSPORTATION





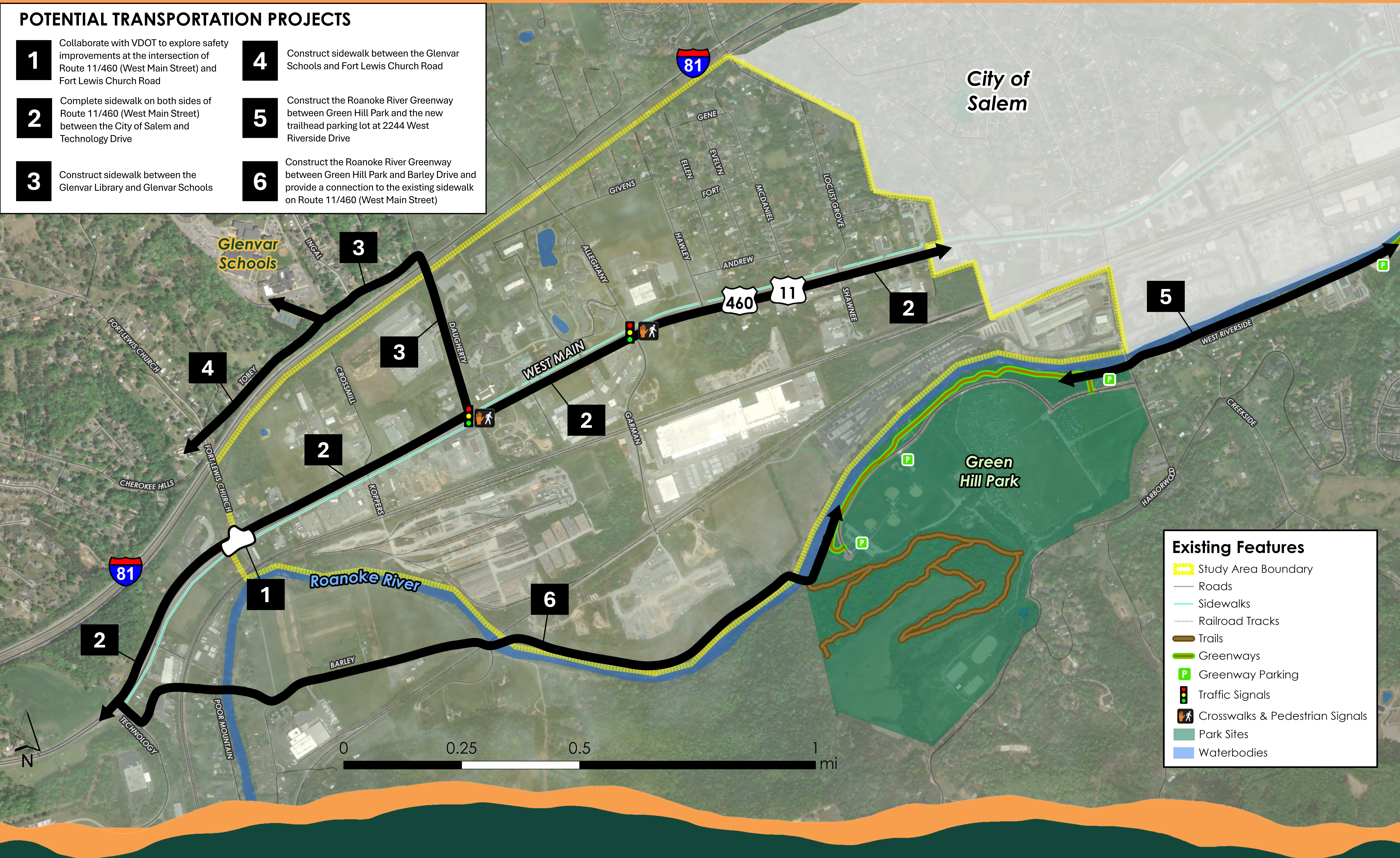


# DRAFT PROJECT RECOMMENDATIONS



## POTENTIAL TRANSPORTATION PROJECTS

- 1** Collaborate with VDOT to explore safety improvements at the intersection of Route 11/460 (West Main Street) and Fort Lewis Church Road
- 2** Complete sidewalk on both sides of Route 11/460 (West Main Street) between the City of Salem and Technology Drive
- 3** Construct sidewalk between the Glenvar Library and Glenvar Schools
- 4** Construct sidewalk between the Glenvar Schools and Fort Lewis Church Road
- 5** Construct the Roanoke River Greenway between Green Hill Park and the new trailhead parking lot at 2244 West Riverside Drive
- 6** Construct the Roanoke River Greenway between Green Hill Park and Barley Drive and provide a connection to the existing sidewalk on Route 11/460 (West Main Street)



## Existing Features

- Study Area Boundary
- Roads
- Sidewalks
- Railroad Tracks
- Trails
- Greenways
- Greenway Parking
- Traffic Signals
- Crosswalks & Pedestrian Signals
- Park Sites
- Waterbodies



## Transportation



- Continue to collaborate with VDOT and the City of Salem to improve traffic flow on West Main Street during Interstate 81 detours
- Collaborate with VDOT to mitigate impacts with the widening of Interstate 81 in western Roanoke County
- Determine appropriate locations for tractor trailer parking near Interstate 81 in western Roanoke County
- Work to improve traffic flow and safety throughout the study area and surrounding area
- Collaborate with VDOT to explore safety improvements at the intersection of Route 11/460/West Main Street and Fort Lewis Church Road
- Explore potential locations for electric vehicle (EV) charging in the study area
- Evaluate opportunities for improving the safety at railroad crossings in western Roanoke County
- Construct a segment of the Roanoke River Greenway from Green Hill Park to Barley Drive and make a connection to Route 11/460/West Main Street
- Construct pedestrian and bicycle facilities along Route 11/460/West Main Street in the study area
- Construct pedestrian facilities between the Glenvar Library and Glenvar Schools
- Construct pedestrian facilities between the Glenvar Schools and Fort Lewis Church Road
- Evaluate bicycle and pedestrian facilities along local roads within the study area and seek funding for these facilities
- Expand transit opportunities to the study area when and where feasible