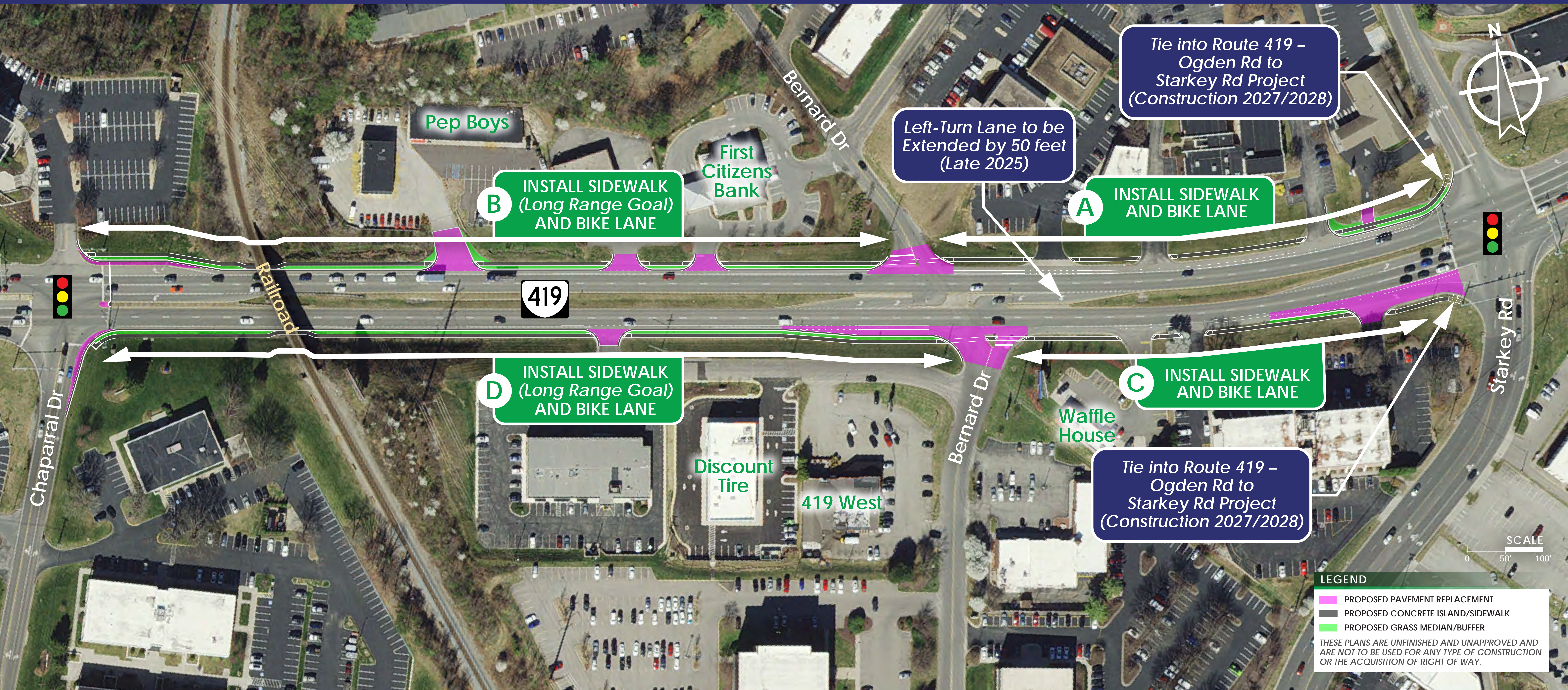
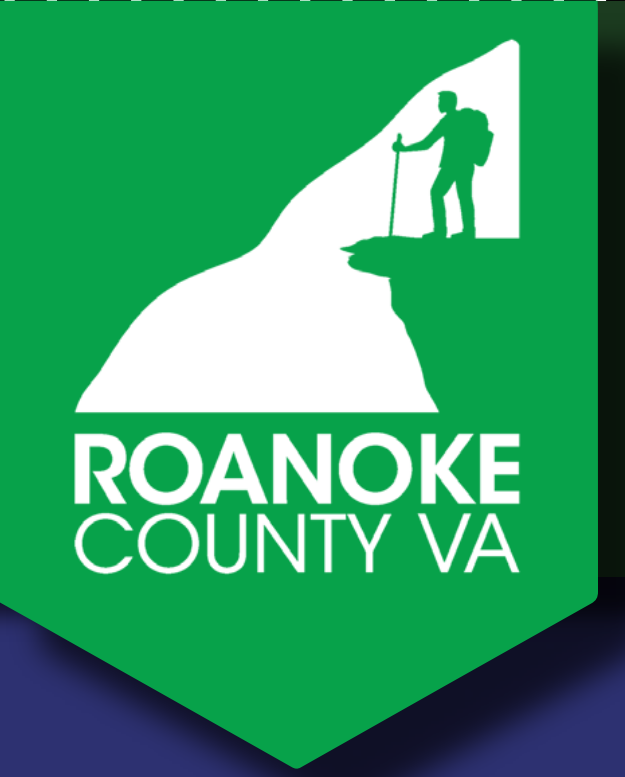


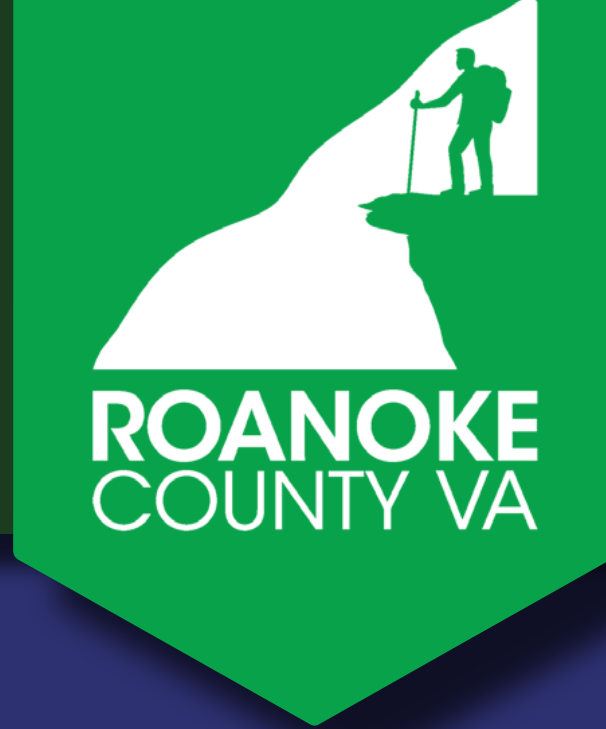
Route 419 Safety Improvements – Starkey Road to Springwood Park Drive

Proposed Improvements – Route 419 Sidewalks and Bike Lanes from Starkey Road to Chaparral Drive



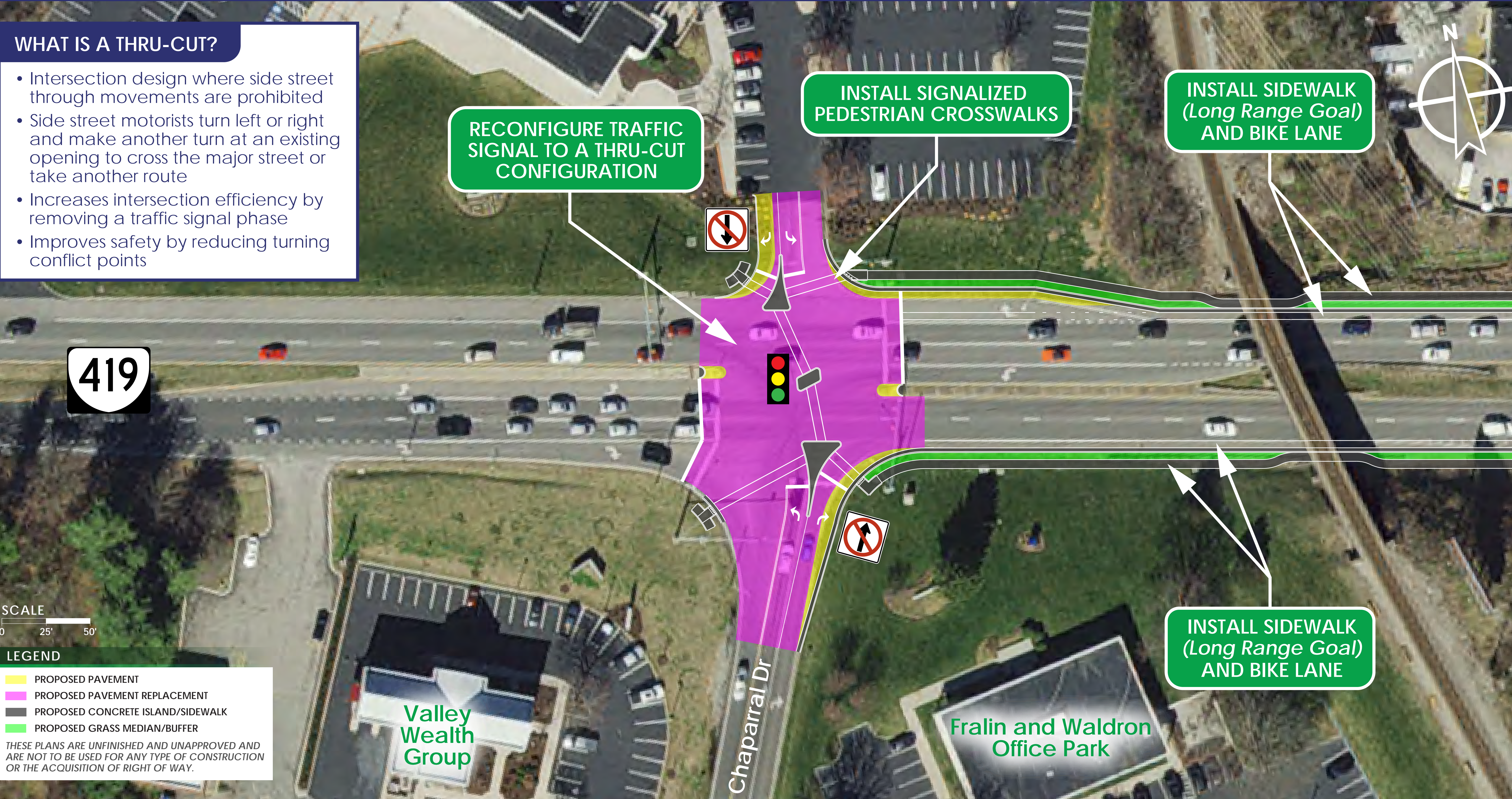
Route 419 Safety Improvements – Starkey Road to Springwood Park Drive

Proposed Improvements – Route 419 at Chaparral Drive



WHAT IS A THRU-CUT?

- Intersection design where side street through movements are prohibited
- Side street motorists turn left or right and make another turn at an existing opening to cross the major street or take another route
- Increases intersection efficiency by removing a traffic signal phase
- Improves safety by reducing turning conflict points



SCALE
0 25' 50'

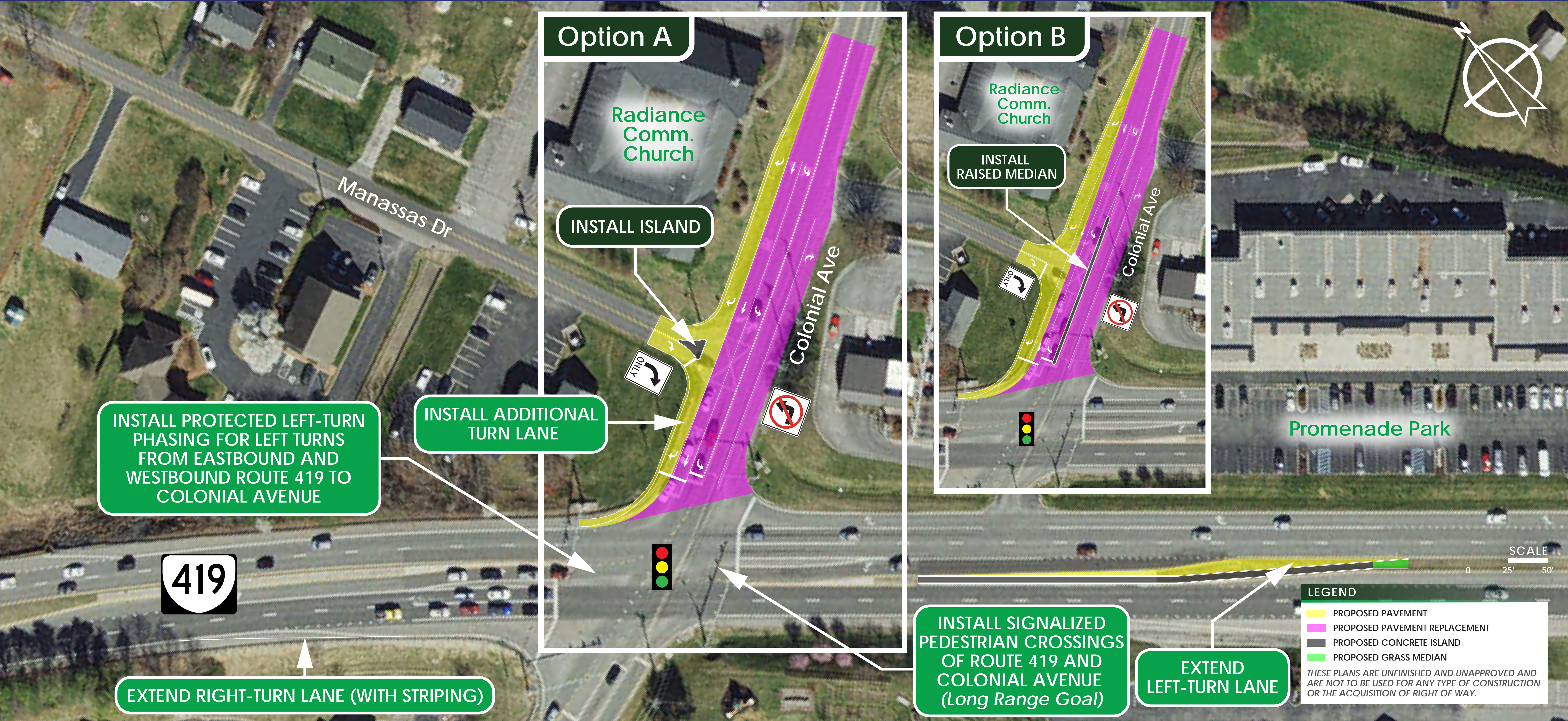
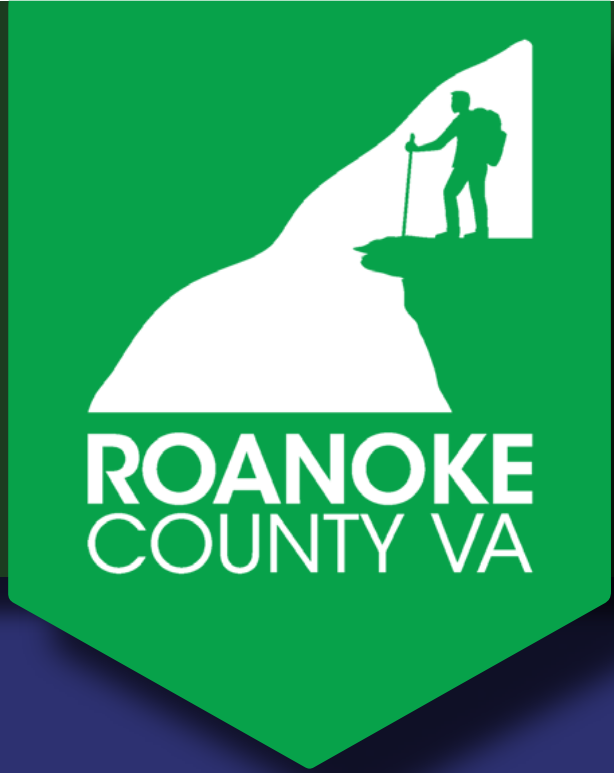
LEGEND

- PROPOSED PAVEMENT
- PROPOSED PAVEMENT REPLACEMENT
- PROPOSED CONCRETE ISLAND/SIDEWALK
- PROPOSED GRASS MEDIAN/BUFFER

THESE PLANS ARE UNFINISHED AND UNAPPROVED AND ARE NOT TO BE USED FOR ANY TYPE OF CONSTRUCTION OR THE ACQUISITION OF RIGHT OF WAY.

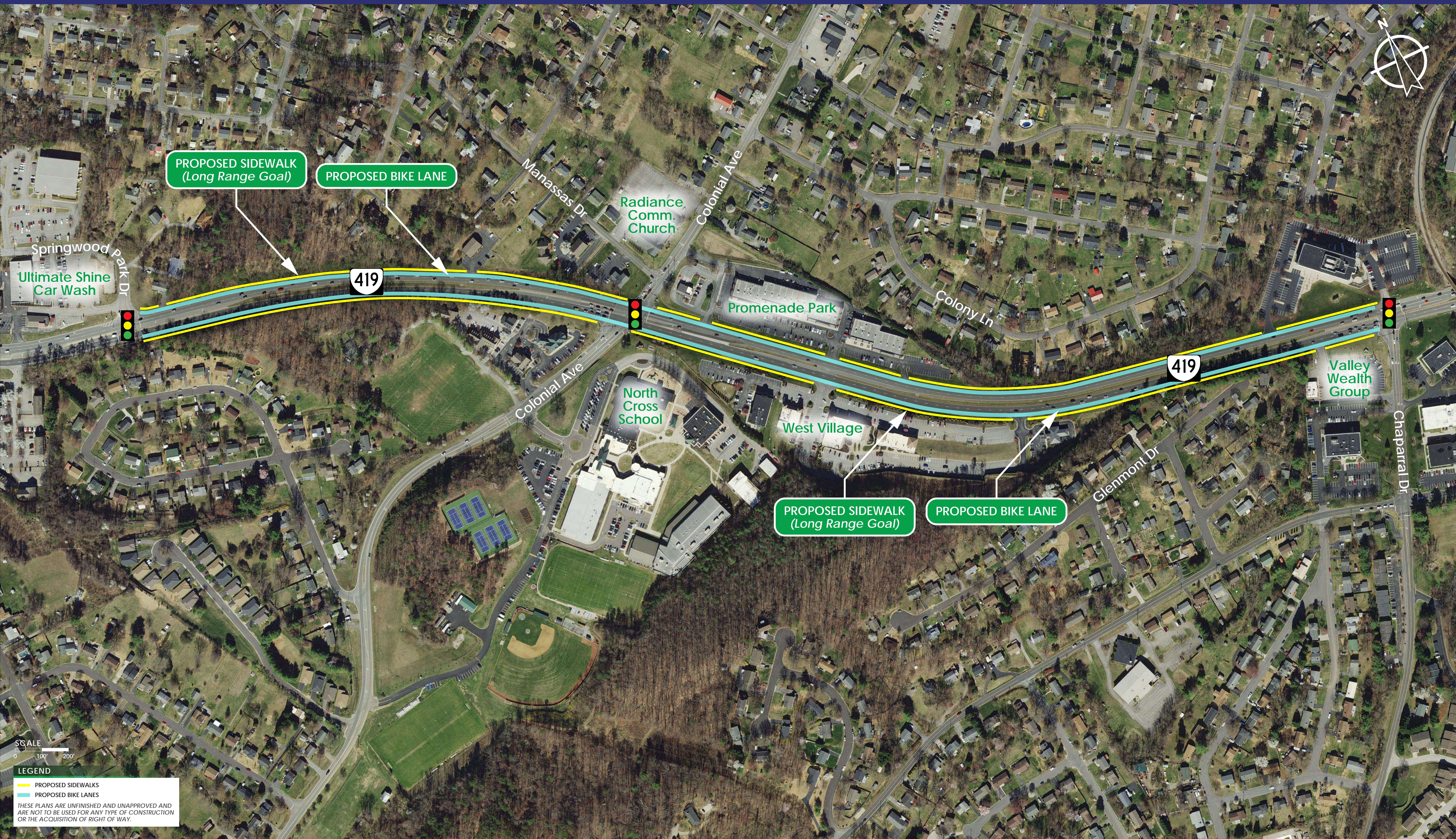
Route 419 Safety Improvements – Starkey Road to Springwood Park Drive

Proposed Improvements – Route 419 at Colonial Avenue – Options A and B



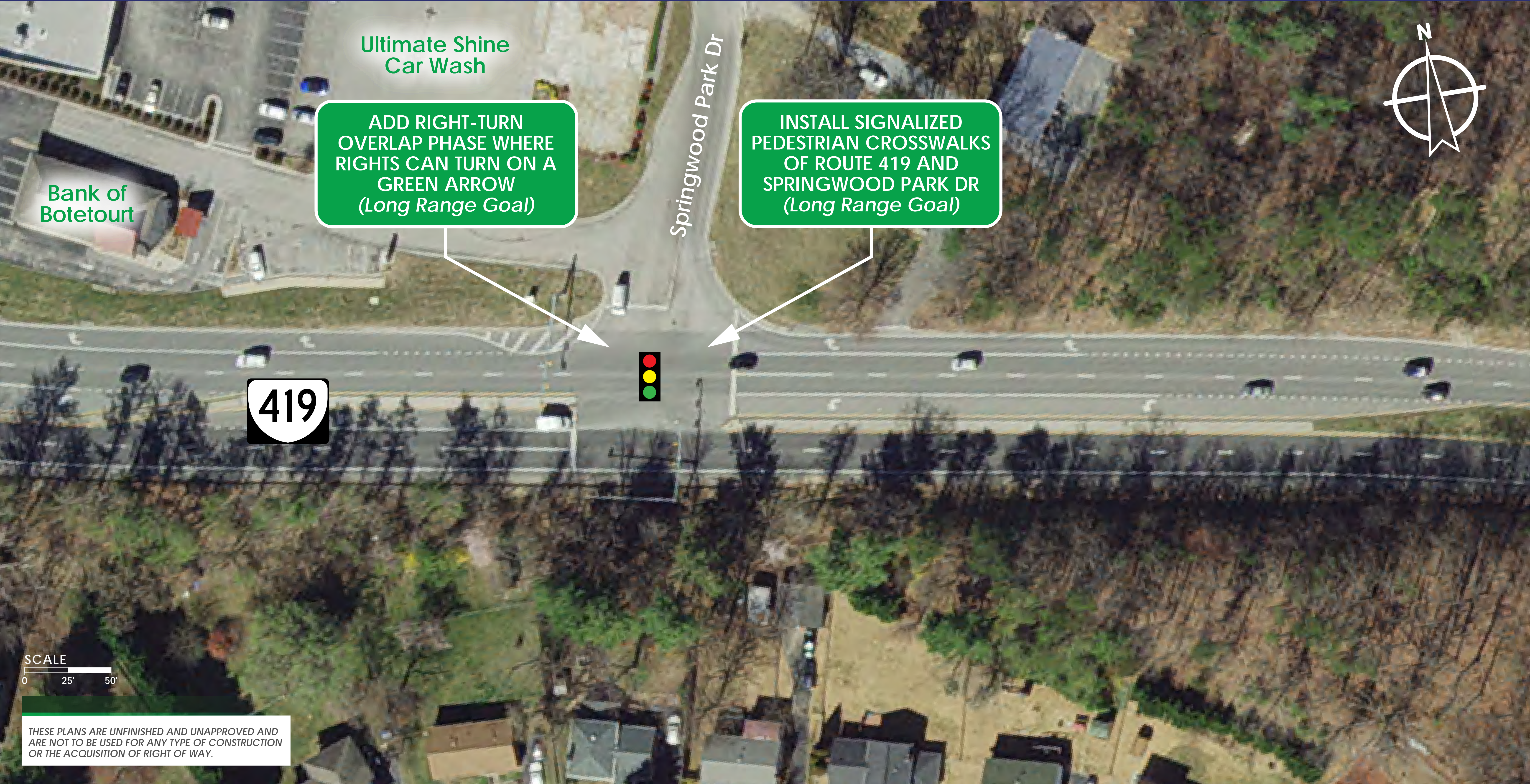
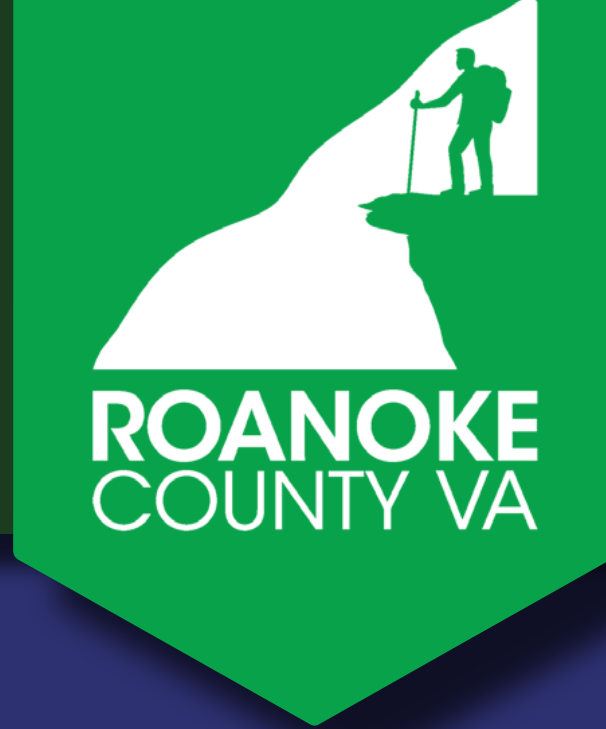
Route 419 Safety Improvements – Starkey Road to Springwood Park Drive

Proposed Improvements - Route 419 Sidewalks and Bike Lanes from Chaparral Drive to Springwood Park Drive



Route 419 Safety Improvements – Starkey Road to Springwood Park Drive

Long Range Improvements - Route 419 at Springwood Park Drive



Route 419 Safety Improvements – Starkey Road to Springwood Park Drive

Proposed Improvements – Route 419 at Promenade Park & West Village



WHAT IS A RESTRICTED CROSSING U-TURN (RCUT)?

- Intersection design where all side street movements begin with a right turn
- Side street left-turn and through vehicles turn right and make a U-turn at a downstream median opening or take another route
- Improves safety by reducing turning conflict points